



COPPER CABLING

CONNECTIVITY SOLUTIONS

2024



WE DESIGN,
BUILD AND DELIVER
STATE OF THE ART
NETWORKING
PRODUCTS

COPPER SYSTEMS

NEXCONEC® Copper Systems stand out as a beacon of networking excellence, showcasing innovative solutions that redefine the industry standards. With a relentless commitment to quality and performance, Nexconec sets itself apart by delivering top-performing structured cabling systems. These cutting-edge solutions not only minimize downtime but also streamline deployment processes, making network management more efficient than ever.

We are focus on facilitating the transition to advanced networking technologies and converging building systems underscores their dedication to staying at the forefront of industry evolution. In a landscape where connectivity is king, Nexconec emerges as a true leader, setting the bar high for networking solutions that prioritize reliability and innovation.

Nexconec is your go-to expert for all things copper connectivity. From custom copper cable design to professional installations, our team delivers high-quality solutions tailored to your specifications.

CONTENTS



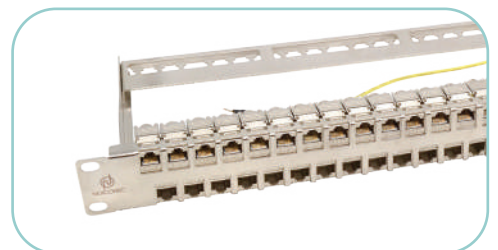
CABLES



PATCH CORDS



PRE-TERMINATED CABLES



PATCH PANELS



COPPER MODULES



KEYSTONES JACKS



RJ45 CONNECTORS



ACCESSORIES



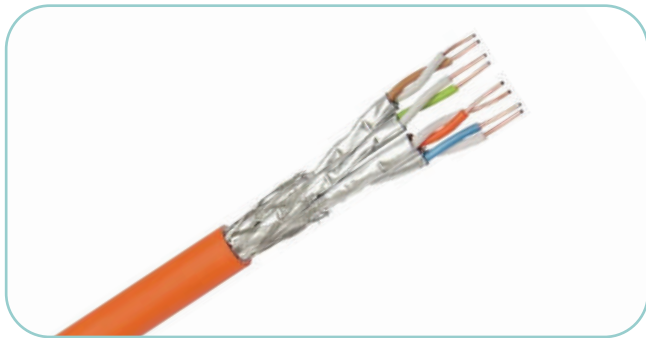
TOOLS



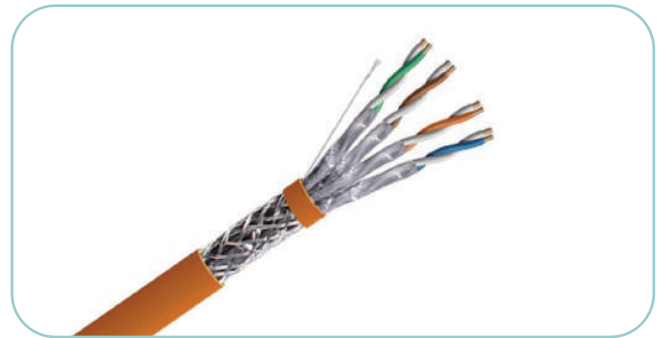
COPPER CABLES

The NEXCONEC® Copper Cables are designed to provide reliable and high-performance connectivity for various applications. These cables are constructed with premium materials to ensure durability and long-lasting performance. Whether you need to connect networking devices or audiovisual equipment, Nexconec Copper Cables deliver exceptional signal quality and stability.

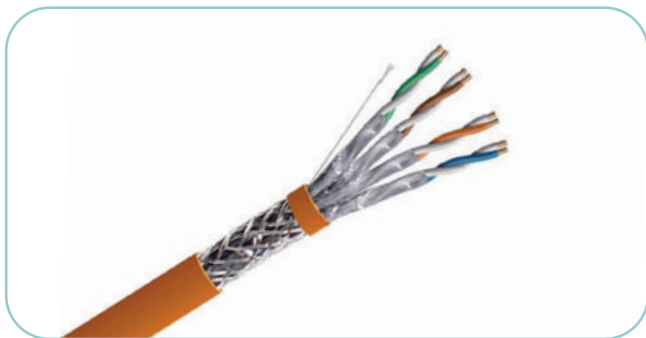
We cater in variety of advanced copper cabling solutions, **UTP and Shielded Category 7A, 7, 6A, 6 & 5e** etc. All cables conform to **IEC, EIA-TIA** performance requirements, **ISO & RoHS** compliant and **CPR Euro Classes** certified.



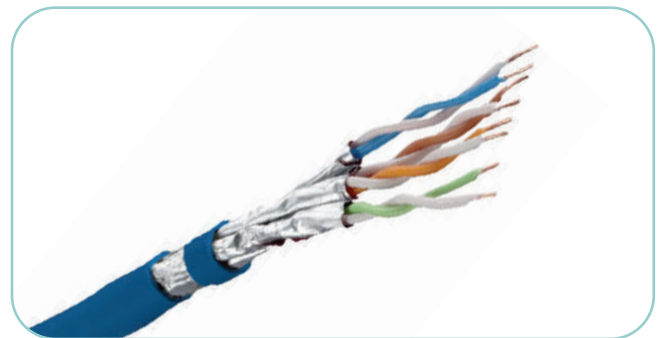
Cat.7A S/FTP Cable



Cat.7 S/FTP Cable



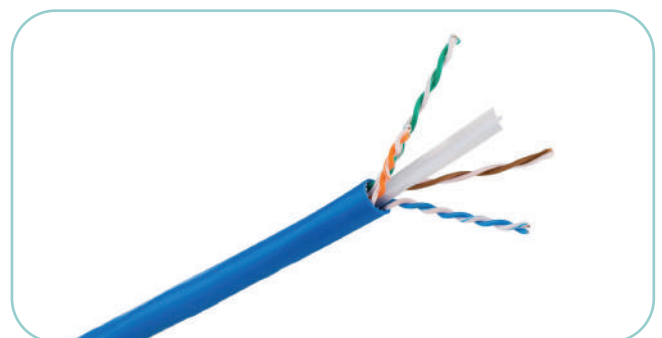
Cat.6A S/FTP Cable



Cat.6A U/FTP Cable



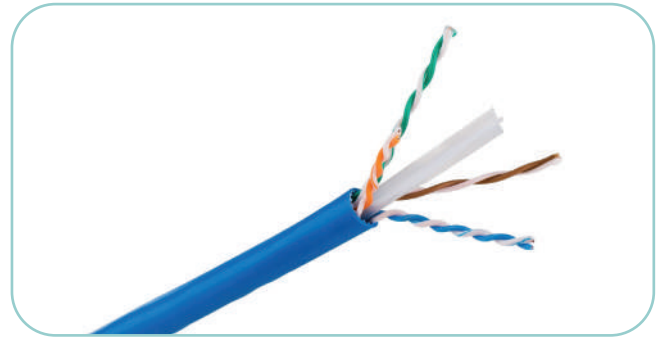
Cat.6A F/UTP Cable



Cat.6A U/UTP Cable



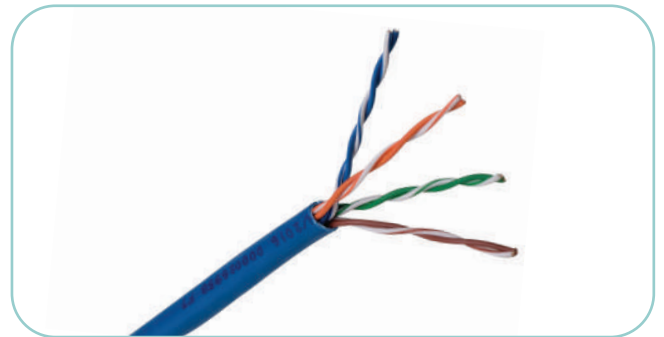
Cat.6 F/UTP Cable



Cat.6 U/UTP Cable



Cat.5E F/UTP Cable



Cat.5E U/UTP Cable

- ✓ Certified high quality performance
- ✓ Available in 22AWG to 24AWG premium grade copper conductor
- ✓ Available in CPR, LSZH, CM, CMP, PVC, PE, HDPE etc. cable jackets.
- ✓ Different color options available for cable jacket
- ✓ Superior shielding for heavy external interference environments
- ✓ Horizontal and backbone in structured cabling installations



COPPER PATCH CORDS

Enhance the efficiency of your network with NEXCONEC® Copper Patch Cords, specifically engineered to deliver superior performance and stability. These high-quality patch cords are constructed with premium copper materials to ensure maximum conductivity and signal integrity. With Nexconec Copper Patch Cords, you can trust that your data will flow smoothly and efficiently throughout your network.



UNSHIELDED PATCH CORDS

Available in:

Cat.6A

Cat.6

Cat.5E



SHIELDED PATCH CORDS

Available in:

Cat.6A

Cat.6

Cat.5E



UNSHIELDED ULTRA SLIM PATCH CORDS

Available in:

Cat.6A

Cat.6

Cat.5E



SHIELDED ULTRA SLIM PATCH CORDS

Available in:

Cat.6A

Cat.6

Cat.5E



UNSHIELDED LOCKABLE PATCH CORDS

Available in:

- Cat.6A
- Cat.6
- Cat.5E

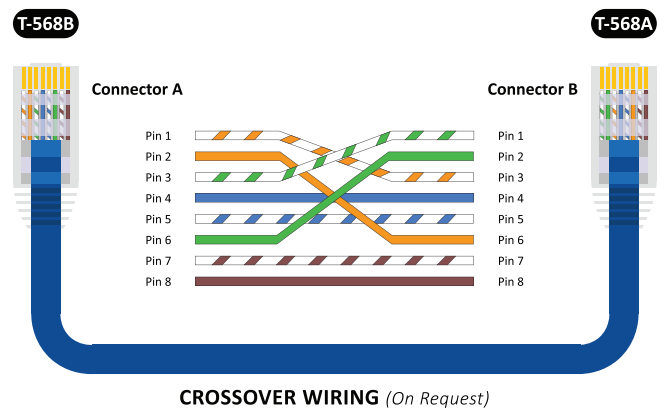
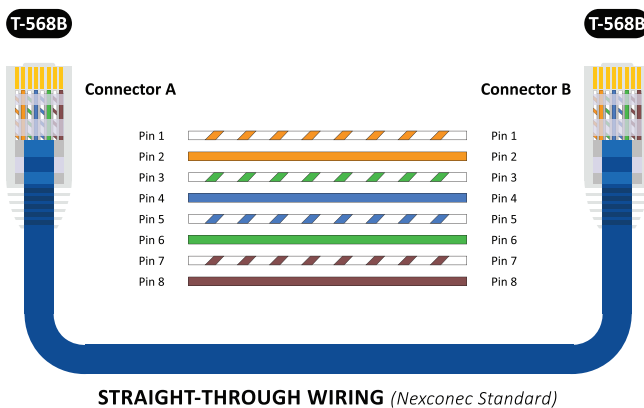


SHIELDED LOCKABLE PATCH CORDS

Available in:

- Cat.6A
- Cat.6
- Cat.5E

CABLE WIRING SCHEME



Please note: TIA-568B Straight-Through Wiring is our Standard cable wiring scheme and we also do the Crossover Wiring scheme on request. For more details contact sales@nexconec.com

COPPER PRE-TERMINATED CABLING

NEXCONEC® Copper Pre-terminated trunk assemblies are the perfect solution for Enterprise/Premise & Data Centre applications where speed of installation is important. Factory termination and testing simplify installation, saving time and labor as compared to field terminated installations.

Custom-Made configurations in pre-engineered lengths with connectors to meet the specific needs of each application. Assemblies are typically built with a choice of 6, 8, 12 or 24 cable bundle using LSZH or PVC jacket. Standards compliant premium connectors and cable are used to ensure the best possible headroom and performance.

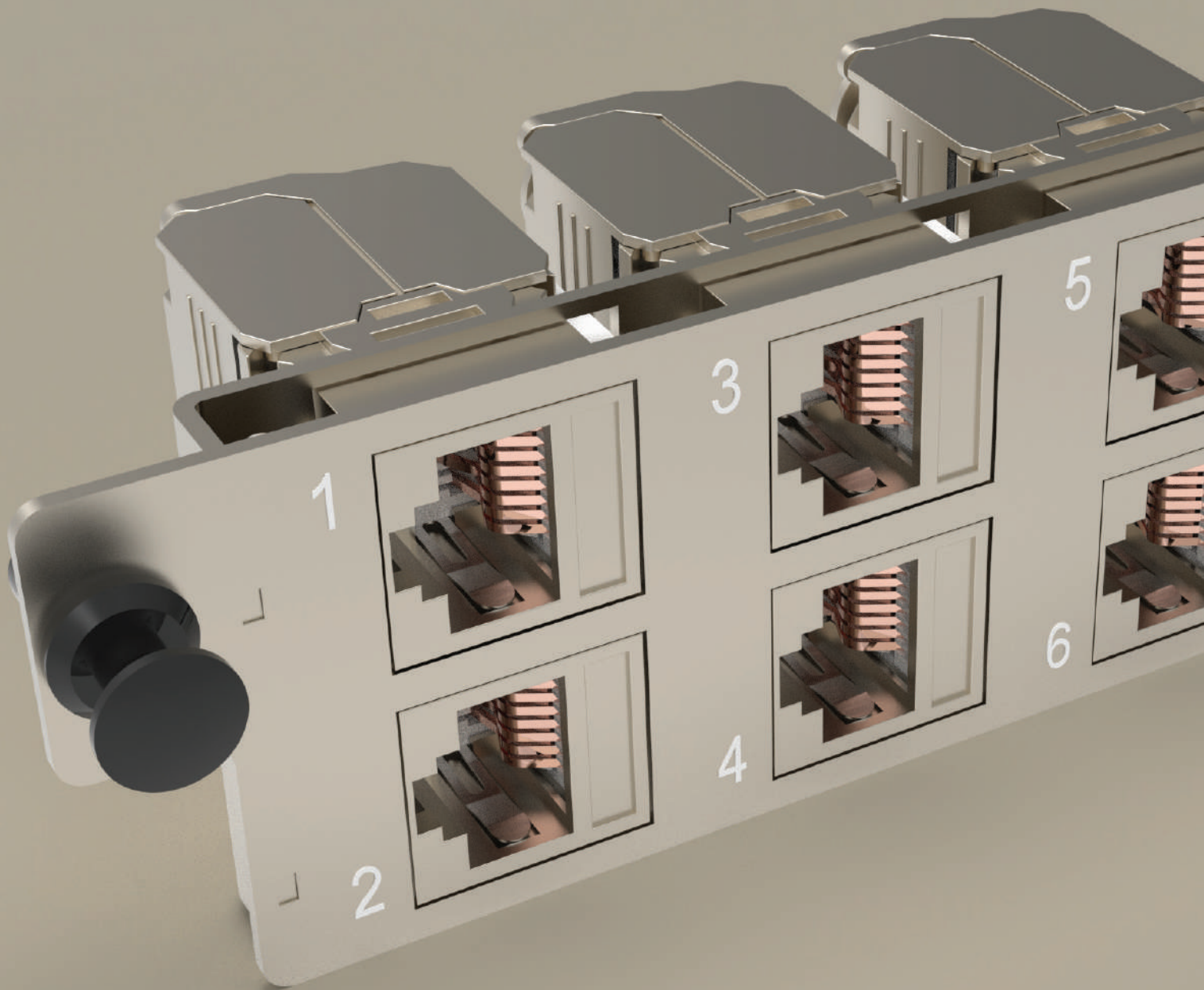


FEATURES AND APPLICATIONS

- ✓ Conform to IEC, EIA-TIA performance requirements
- ✓ Factory tested using Fluke tester
- ✓ Available in Cat5E, Cat6 and Cat6A
- ✓ Custom cable and fan-out length
- ✓ Cost saving and rapid development
- ✓ Cable jacket available in CPR, LSZH, CM and PVC, and CPR Certified cables
- ✓ Enterprise/Premise networks
- ✓ Direct Connection to Equipment or patch panel
- ✓ High Performance and Reliability - 100% tested
- ✓ Data Center networks



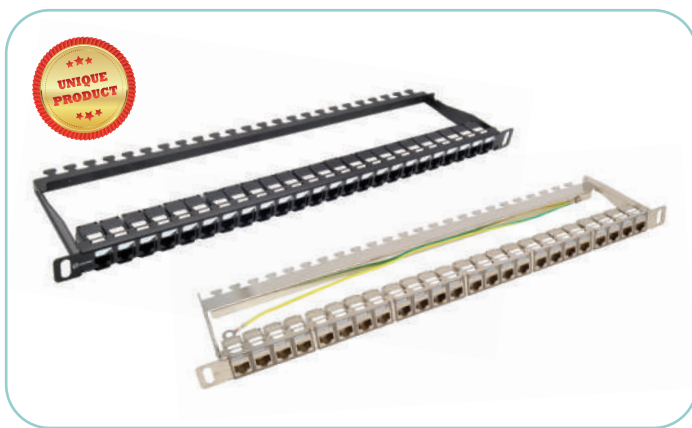
PROFESSIONAL NETWORKING SOLUTIONS



COPPER PATCH PANELS

NEXCONEC® Copper Patch Panels, the ideal solution for efficient network connectivity in any business setting. With high-quality materials and precision engineering, these patch panels ensure reliable performance and seamless data transmission. Upgrade your network infrastructure with Nexconec Copper Patch Panels.

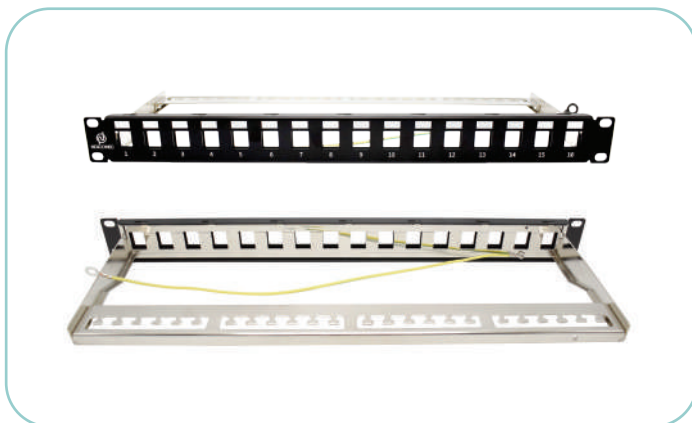
These Copper Panels play a crucial role in network infrastructure, ensuring seamless connectivity for voice telephony, high-speed data transmission, cable TV, and broadband access networks.



0.5U 24 PORTS KEYSTONE JACK PATCH PANEL

Available in:

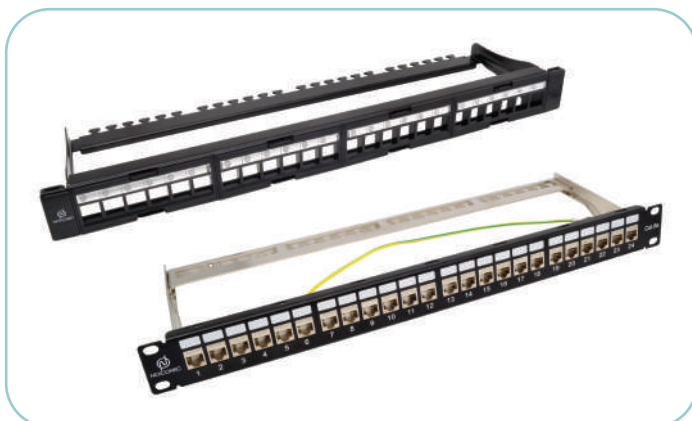
- Cat.6A
- Cat.6
- Cat.5E
- UTP
- STP



1U 16 PORTS KEYSTONE JACK PATCH PANEL

Available in:

- Cat.6A
- Cat.6
- Cat.5E
- UTP
- STP



1U 24 PORTS KEYSTONE JACK PATCH PANEL

Available in:

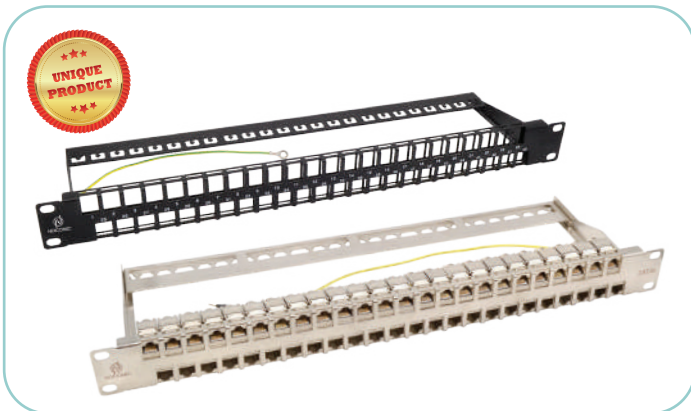
- Cat.6A
- Cat.6
- Cat.5E
- UTP
- STP



**1U 24 PORTS ANGLED
KEYSTONE JACK PATCH PANEL**

Available in:

- Cat.6A
- Cat.6
- Cat.5E
- UTP
- STP



**1U 48 PORTS
KEYSTONE JACK PATCH PANEL**

Available in:

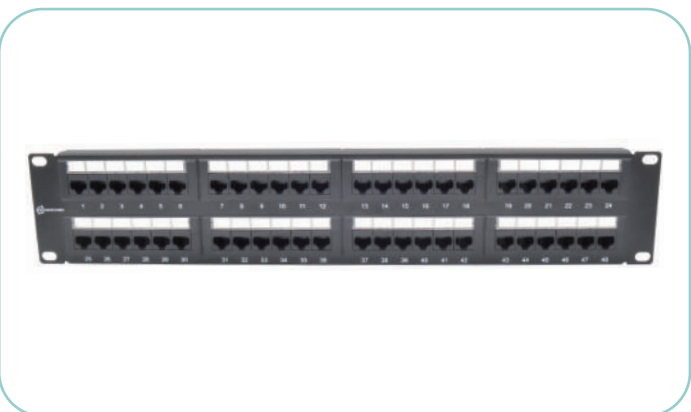
- Cat.6A
- Cat.6
- Cat.5E
- UTP
- STP



**1U 24 PORTS
PCB PATCH PANEL**

Available in:

- Cat.6A
- Cat.6
- Cat.5E
- UTP
- STP



**2U 48 PORTS
PCB PATCH PANEL**

Available in:

- Cat.6A
- Cat.6
- Cat.5E
- UTP
- STP

COPPER MODULES



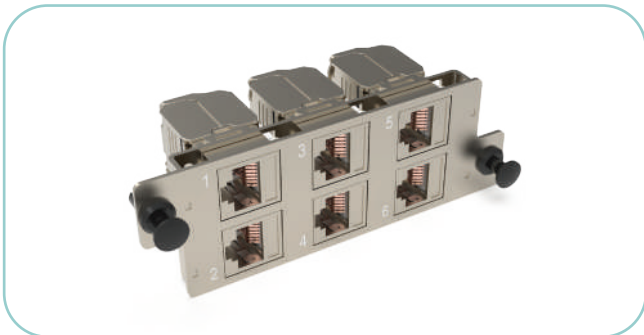
NGX MODULE

Available in:

Cat.6A Cat.6

UTP STP Keystone Jack Feed Through

Loaded Unloaded



HD MODULE

Available in:

Cat.6A Cat.6

UTP STP Keystone Jack Feed Through

Loaded Unloaded



LGX MODULE

Available in:

Cat.6A Cat.6

UTP STP Keystone Jack Feed Through

Loaded Unloaded



LGX DIN RAIL MOUNTED BOX

Available in:

Cat.6A Cat.6

UTP STP Keystone Jack Feed Through

Loaded Unloaded



MINI DIN RAIL MOUNTED BOX

Available in:

Cat.6A Cat.6

UTP STP Keystone Jack Feed Through

Loaded Unloaded

KEYSTONES JACKS



TOOLLESS KEYSTONE JACKS

Available in:

Cat.6A Cat.6 Cat.5E

UTP STP

Black White



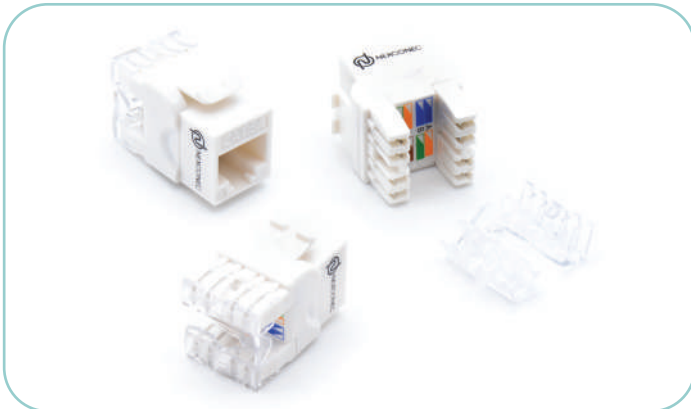
FEED THROUGH KEYSTONE JACKS

Available in:

Cat.6A Cat.6 Cat.5E

UTP STP

Black White



PUNCHDOWN KEYSTONE JACKS

Available in:

Cat.6A Cat.6 Cat.5E

UTP STP

Black White



MINI SHUTTERED KEYSTONE JACKS

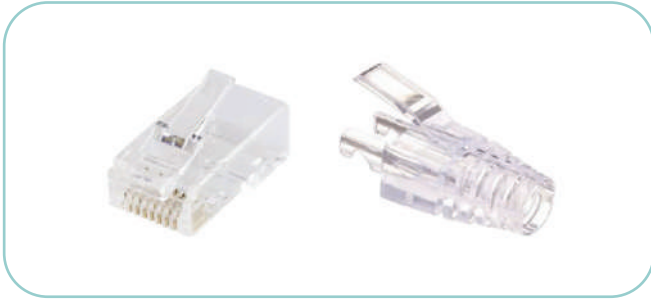
Available in:

Cat.6A Cat.6 Cat.5E

UTP STP

Black White

RJ45 CONNECTORS



UNSHIELDED RJ45 CONNECTORS

Available in:

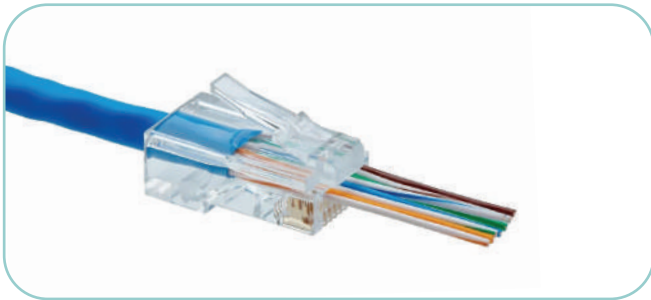
- Cat.6A
- Cat.6
- Cat.5E
- UTP
- Transparent



SHIELDED RJ45 CONNECTORS

Available in:

- Cat.6A
- Cat.6
- Cat.5E
- STP
- White
- Grey
- Blue



UNSHIELDED PASS THROUGH CONNECTORS

Available in:

- Cat.6A
- Cat.6
- Cat.5E
- UTP
- Transparent



SHIELDED PASS THROUGH CONNECTORS

Available in:

- Cat.6A
- Cat.6
- Cat.5E
- STP
- White
- Grey
- Blue



UNSHIELDED FIELD TERMINABLE CONNECTORS

Available in:

- Cat.6A
- Cat.6
- Cat.5E
- UTP
- Black



SHIELDED FIELD TERMINABLE CONNECTORS

Available in:

- Cat.6A
- Cat.6
- Cat.5E
- STP



SHIELDED FIELD TERMINABLE CONNECTORS (PULLING RING)

Available in:

- Cat.6A
- Cat.6
- Cat.5E
- STP
- Black

COPPER ACCESSORIES

NEXCONEC® provides a wide selection of copper accessories for facilitating the installation of copper components in work area setups. Our product range includes faceplates, wall outlet boxes, faceplate adapters, blank plates, cable manager bars, and various other accessories. Additionally, we offer specialized products that offer innovative solutions for deploying network connectivity precisely where it is required.



Copper Termination Wall Outlet Box
(Single & Dual Ports)



IDC Copper Faceplates EU Type
(Single & Doublegang)



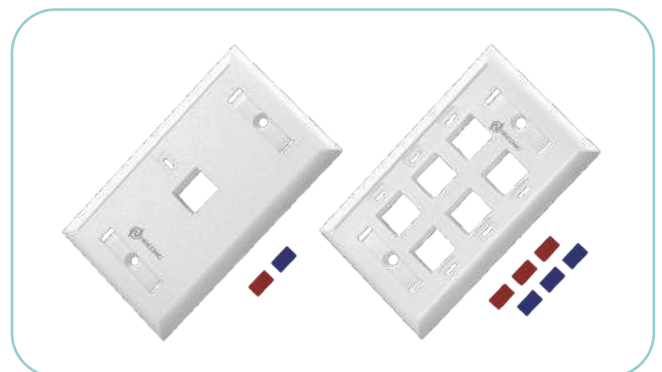
Copper Faceplates (EU) Type Shuttered Jack
(Single & Dual Ports)



Copper Faceplates (DE) German Type
Shuttered Jack (Single & Dual Ports)

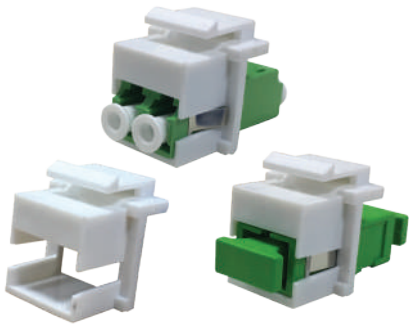


Copper Faceplates (UK) Type
(Single & Dual Ports)



Copper Faceplates (US) Type
(1, 2, 3, 4 and 6 Ports)

ACCESSORIES



Fiber Keystone Jack Couplers



1U 19" Snap-In Blanking Plate Plastic



1U Cable Manager 4 Hooks Metal, 75mm



1U Cable Manager 5 Hooks Plastic, 80mm



1U Cable Manager Brush Strip 5 Hooks Plastic, Depth 70mm



1U/2U Cable Manager Rail



1U 19" Brush Strip Bar



1U/2U Dual-Sided Cable Manager Rail

COPPER MAIN TOOLS

To ensure the successful connection of copper wiring to a structured Ethernet cabling system, it is imperative to have the necessary tools and skills. Nexconec offer essential tools like network tool kits, punch down tools, and cable strippers, which play a crucial role in maintaining network connectivity. A single incorrect connection in a network cabling installation can have widespread impacts, underscoring the importance of using the proper tools and techniques for optimal performance.



Punch Down Impact Tool



IDC Punch Down Impact Tool



Cable Jacket Stripper & Cutter



Handheld RJ45 Crimping Tool

Copper tools are usually applied to data centers or telecom network cabling installation in computers, phones, and audio devices. Network tool kits, punch down tools, and cable strippers can greatly accelerate the working efficiency and reduce the task difficulty. It is also important for technicians to use them in daily applications.

CERTIFICATES & STANDARDS

Nexconec Ltd is approved to ISO and maintains third party approvals on the performance of the products and systems from Intertek laboratories. The Nexconec Cabling System is guaranteed to meet or exceed the electrical or optical performance requirements of the relevant category as defined in the following standard: **EN 50173, ISO 11801, ANSI-TIA-578B.**



ETL CERTIFICATES



CPR CERTIFICATES (COPPER CABLES)



ISO CERTIFICATES



PRODUCTS & SYSTEM WARRANTY

Nexconec provides a standard 1 Year Product Warranty on all products and a 25 Years System Warranty for end to end networking solutions certified by Nexconec's Authorized Installer.

WE WERE BORN WITH A MISSION

The mission is to be a leader and innovator in network connectivity through superior engineering, manufacturing and customer services capabilities. Dynamic, flexible and customer focused, Nexconec is constantly evolving along with the industry. We develop and manufacture high end innovative solutions for connectivity and structured cabling.

We have very strict manufacturing and development process in place to guarantee the quality of the products. We understand the demands and requirements of the customers, and respond accurately to facilitate the work of each request. We design, specify, and manufacture all aspects of the products using our multi-talented design and engineering teams.

With multiple locations around the globe coupled with our distribution network we know how to best serve you with the greatest attention.

With headquarters in Hong Kong, offices in China, France, Argentina coupled with our distribution network we know how to best serve you with the greatest attention.

REPRESENTING NETWORK LEADERSHIP AT EVERY TURN

COPPER CABLING CONNECTIVITY SOLUTIONS



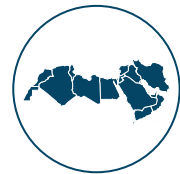
EUROPE



LATIN AMERICA



ASIA-PAC



MENA



✉ sales@nexconec.com
🌐 www.nexconec.com

