



# DATA CENTER





High demand for efficiency and need for space

Lower operation costs. High degree of agility and flexibility

Reduced environmental impact, modular and scalable solutions

FAST AND FLEXIBLE  
CONNECTIVITY,  
FUTURE  
PROOFING OF  
DATA CENTERS

## ABOUT US

---

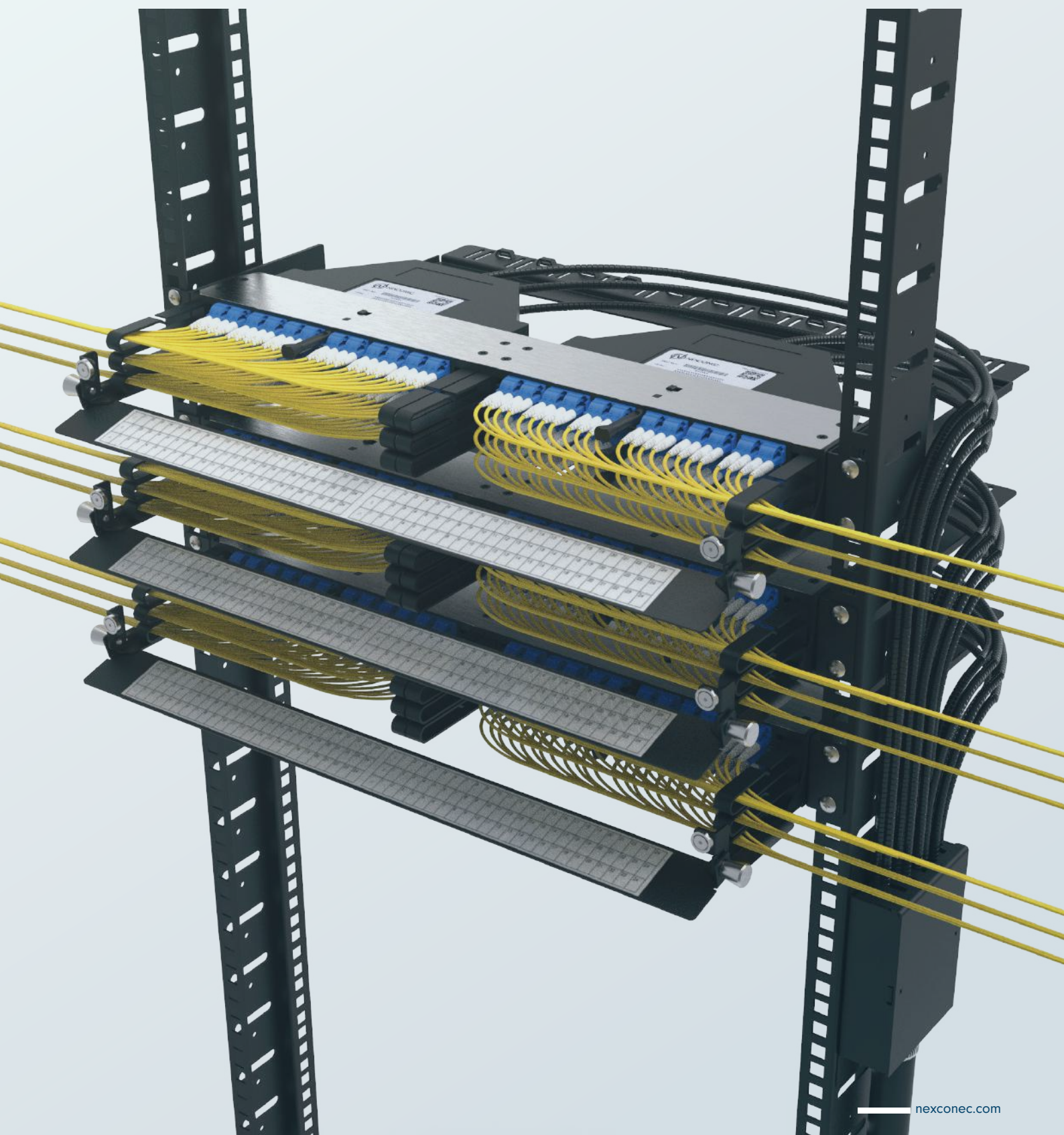
Dynamic, flexible and customer focused, Nexconec is constantly evolving along with the industry. We develop and manufacture high end innovative solutions for connectivity and structured cabling.

Our exigent international customer base is active in multiple segments: Data Center, Telecommunication networks and Premise networks.

With multiple locations around the globe coupled with our distribution network we know how to best serve you with the greatest attention.



# ULTRA HIGH DENSITY SOLUTIONS



## NGX

NGX solution offers the highest density in a 1U space with variable module options facilitating quick and cost effective installation.

CHASSIS 1U, 2U & 4U

UP TO 144FO IN 1U

MODULES

MTP®/MPO, PRECONNECTED, DIRECT PATCH, SPLICING, COPPER

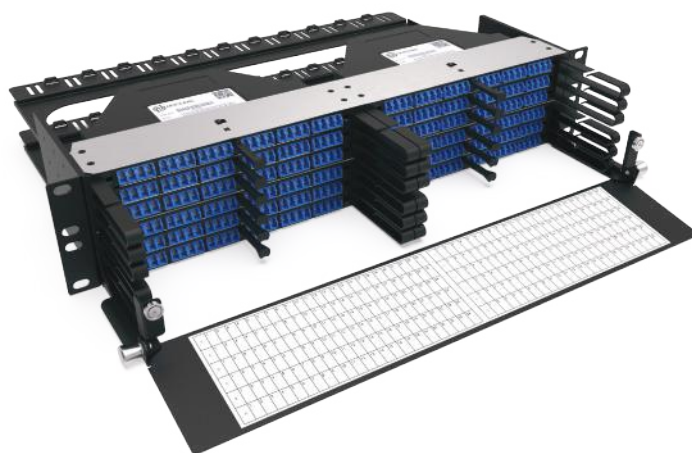
FRONT AND REAR MANAGEMENT

ACCESS TO FRONT AND REAR MODULES

IDENTIFICATION OF EACH OPTICAL PORT



1U NGX HD Modular Panel (Up to 144FO)



2U NGX HD Modular Panel (Up to 288FO)



1U NGX HD Angled Modular Panel (Up to 144FO)



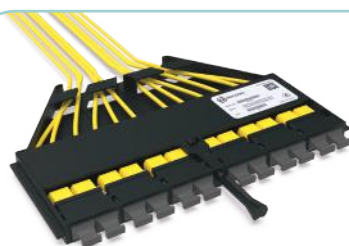
NGX Cassette MTP/MPO



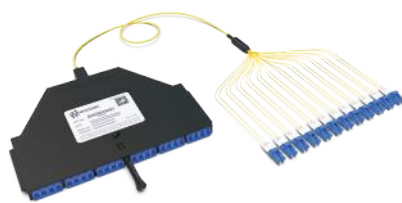
NGX Splice Cassette



NGX Patching Cassette



NGX MTP/MPO Patching Cassette



NGX Pre-terminated Cassette



NGX Zero RU Bracket

## MTP®/MPO BREAKOUT PATCH PANELS UP TO 144FO

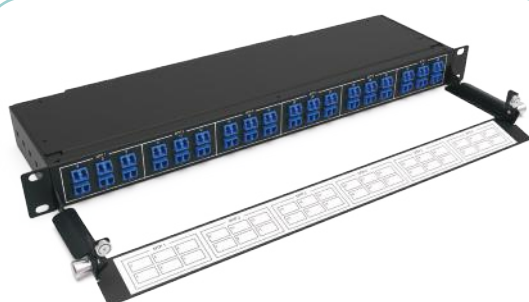
The NEXCONEC® MPO-LC Panels offers ultra high density in a compact 1U enclosure for quick and cost effective installation. Easy routing of cables with front and rear management. IDENTIFICATION OF EACH OPTICAL PORT

CHASSIS 1U

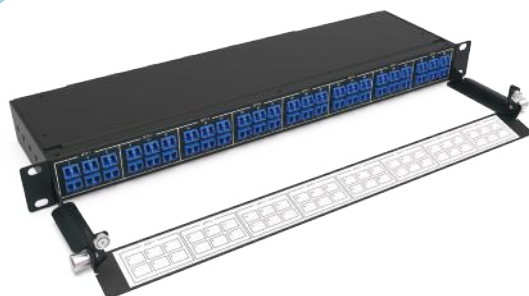
UP TO 144FO IN 1U

FRONT AND REAR MANAGEMENT

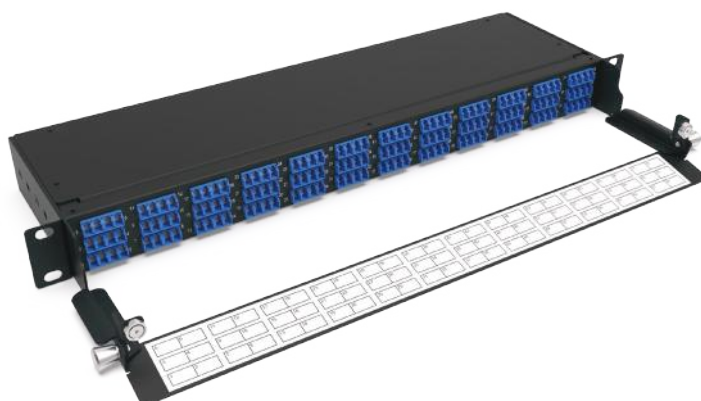
IDENTIFICATION OF EACH OPTICAL PORT



1U HD Panel 6xMPO(M) Elite-LC 72FO



1U HD Panel 8xMPO(M) Elite-LC 96FO



1U HD Panel 12xMPO(M) Elite-LC 144FO



1U QSFP Breakout Panel 12xMPO(M) Elite-LC 96FO



## PATCHING PANELS UP TO 144FO

The 1U Patching panels are designed to direct patch for interconnection between equipments. Easy routing with front and rear management.

CHASSIS 1U

UP TO 144FO IN 1U

FRONT AND REAR MANAGEMENT

IDENTIFICATION OF EACH OPTICAL PORT



1U 24 Ports SC SX/LC DX (Up to 48FO LC)



1U 48 Ports SC SX/LC DX (Up to 96FO LC)

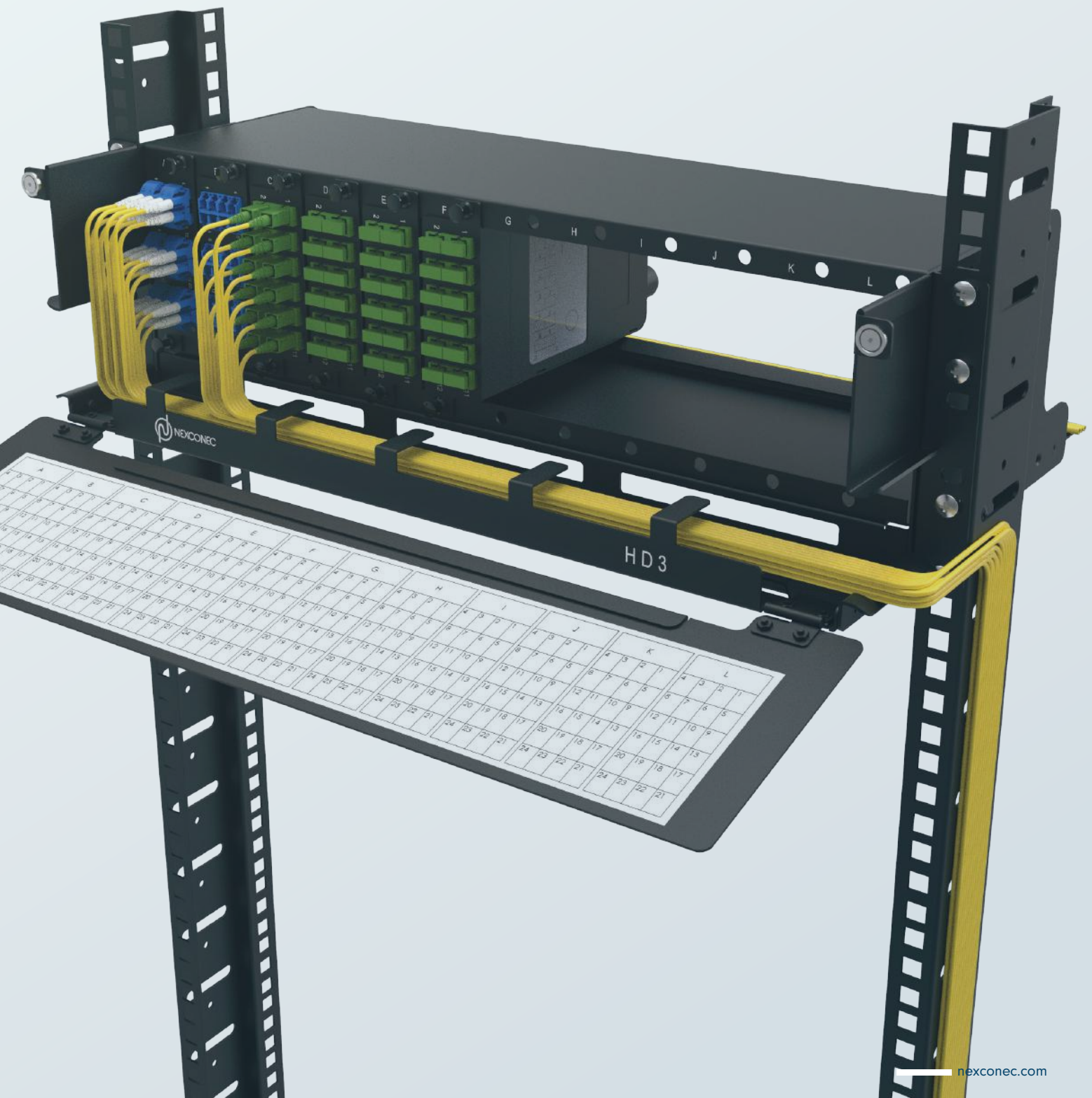


1U 36 Ports SC SX/LC DX (Up to 72FO LC)



1U 36 Ports SC DX/LC QD (Up to 144FO LC)

# HIGH DENSITY SOLUTIONS



## HD

The HD solution consists of different 1U modular chassis and panel options that can support up to 96FO in 1U to 3U. The HD solution is compatible with MTP®/MPO-LC modules and different adaptor plates.

CHASSIS AND PANEL 1U AND 3U  
FRONT OR REAR MANAGEMENT  
IDENTIFICATION OF EACH OPTICAL PORT



1U 4 Slots HD Modular Fixed Frame



1U 4 Slots HD Modular Sliding Panel



3U 12 Slots HD Modular Fixed Frame (Up to 288FO)



HD Cassette MTP/MPO



HD Cassette MTP/MPO (Type-B)



HD Splice Cassette



HD Adapter Plates



HD Modular Keystone Jack Module



HD Zero RU Bracket



## LGX

LGX footprint is a classic in our industry. Our LGX range offers several drawer and chassis options from 1U to 4U. The LGX panels are compatible with our plastic MTP®/MPO-LC modules, splicing cassettes and adaptor plates.

CHASSIS AND PANEL 1, 2, 3 AND 4U  
FRONT OR REAR MANAGEMENT  
IDENTIFICATION OF EACH OPTICAL PORT



1U 3 Slots LGX Modular Fixed Frame



3U 14 Slots LGX Modular Frame (Up to 336FO)



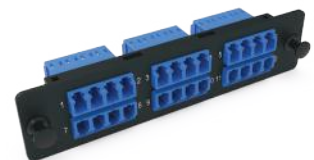
1U 3 Slots LGX Sliding Patch Panel



LGX Cassette MTP/MPO



LGX Splice Cassette



LGX Adapter Plates



Retrofit Plate CCH to LGX



LGX Keystone Jack Module



LGX Zero RU Bracket

## PIVOT PANEL MPO SOLUTIONS

NEXCONEC® MTP®/MPO to LC/SC breakout pivot patch panel offers an expandable deployment for high-speed network implementations, in the meantime providing greater protection to the installed patch cords in main, horizontal and equipment area of data center. Each tray offers individual pivoting up to 120° to ensure easy access during installation or rework without any interference with the existing cable or fibers.



- Panel 1U, 1.5U and 3U (Up to 288FO)
- MPO (Base-8), (Base-12) and (Base-24)
- Available in Standard SM and MM Options
- ½ RU Individual Trays, Pivoting up to 120°
- Standard 19" or 21" Rack Mounting Type
- Right or Left Hinged Swing-out



1U MPO-LC/SC Pivot Patch Panel (Up to 96FO)



1.5U MPO-LC/SC Pivot Patch Panel (Up to 144FO)

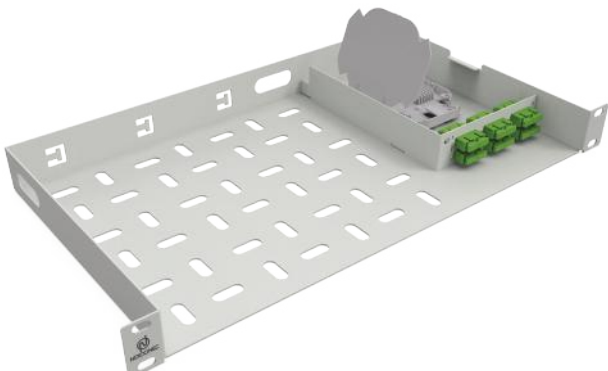


3U MPO-LC/SC Pivot Patch Panel (Up to 288FO)



## STORAGE PANELS

NEXCONEC® 1U fiber cable storage panel box, mounted on 19" network racks, cabinets for fibers, cables storage. Use this fiber cable storage patch panel in the telecommunication room, data centers to storage excess fibers and cables. It could make your fiber cable management neat and professional.

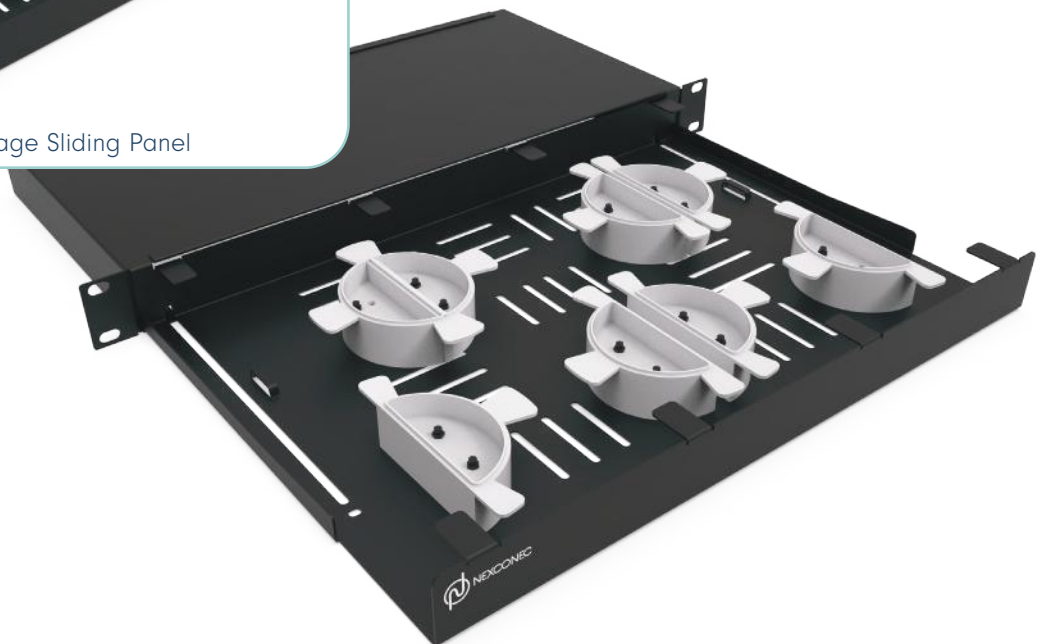


1U 12 Ports SC Fiber Panel & Shelf

- Designed for Space Efficiency and Flexibility
- Recessed Panel Bracket Mounting
- High-Density Storage with a Minimal Footprint
- Accommodate Excess Fiber Cables
- Fits Standard 19" Racks
- Easy Installation and Secure Fitting



1U Fiber Storage Sliding Panel



## FIBER CABLE MANAGEMENT SOLUTIONS

NEXCONEC® Fiber Management Accessories are designed to provide superior organization, protection, and scalability for fiber optic networks in data centers, telecommunications, and enterprise environments. These accessories help streamline cable routing, improve space efficiency, and simplify maintenance, contributing to optimized network performance and reliability.



1U 19" Snap-In Blanking Plate (Plastic)



1U Cable Manager 4 Hooks (Metal) 75mm



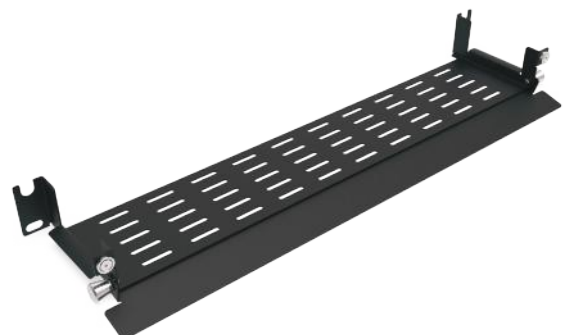
1U Cable Manager 5 Hooks (Plastic) 80mm



1U Cable Manager with Brush Strip 5 Hooks (Plastic) 70mm



2U Cable Storage Module



1U Retrofit Front Manager



## FIBER ENCLOSURES & FRAMES

NEXCONEC® Racks & Cabinets are an ideal choice for organizations aiming to build or upgrade their fiber network infrastructure with a reliable, flexible, and well-organized solution. These products are designed to support efficient maintenance, simplify network growth, and contribute to overall network uptime and performance.

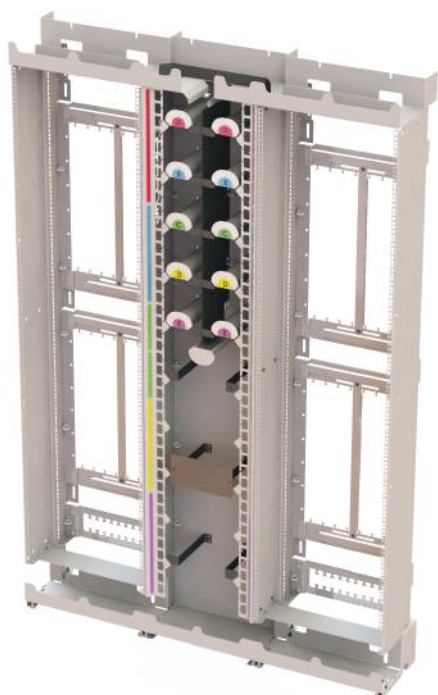
Side Manager  
135mm



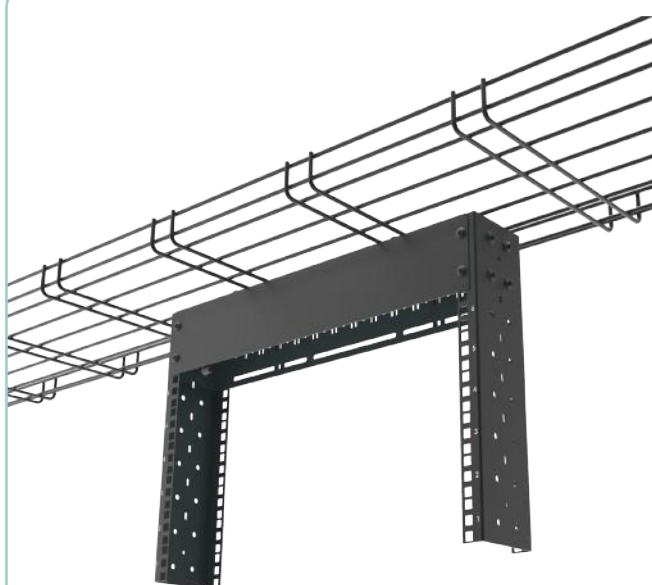
Side Manager  
270mm



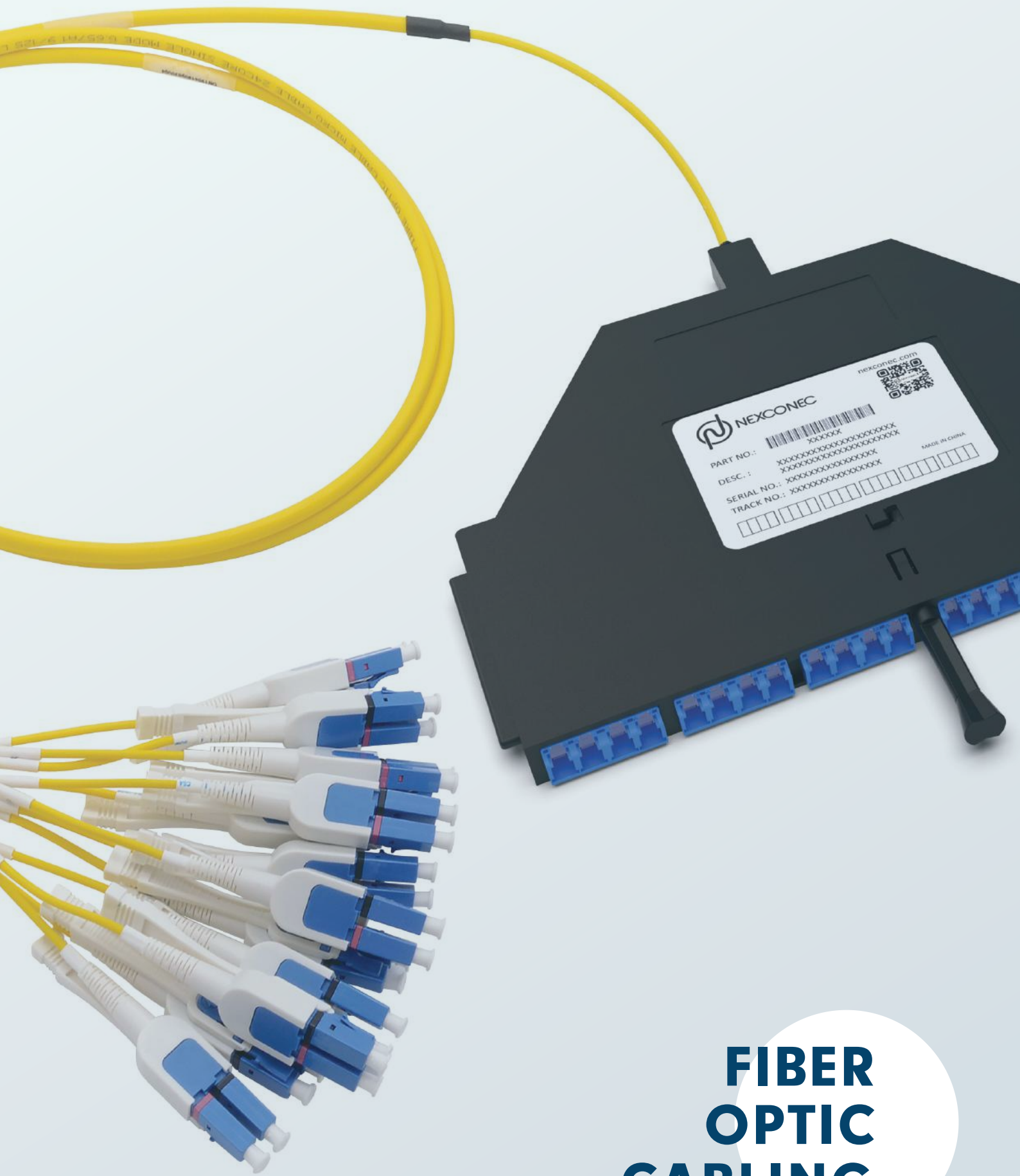
19" High Density Open Frame Rack (27U - 48U)



19" ODF Rack (42U)



Over Head Mini Rack (4U, 6U & 8U)



# FIBER OPTIC CABLING



## MTP®/MPO CABLING

NEXCONEC® offers full range of MTP®/MPO trunks & patchcords from 12FO to 288FO, with Elite and Standard optical performance, in MPO/MPO Base 8/12/24.

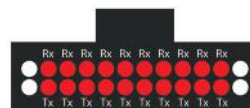
The MTP/MPO trunks & patchcords are compliant with international standards such as the IEC, EIA/TIA and Telcordia.



8 Fiber MTP



12 Fiber MTP



20 Fiber MTP

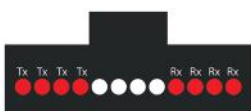


24 Fiber MTP

## MTP®/MPO-LC FAN-OUT

NEXCONEC® offers full range of MTP®/MPO-LC Fan outs, with Elite and Standard optical performance, in MPO/MPO Base 8/12/24 to best serve 40G, 100G and 400G applications.

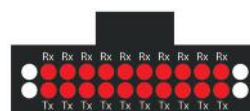
The MTP®/MPO trunks & patchcords are compliant with international standards such as the IEC, EIA/TIA and Telcordia.



8 Fiber MTP



12 Fiber MTP



20 Fiber MTP



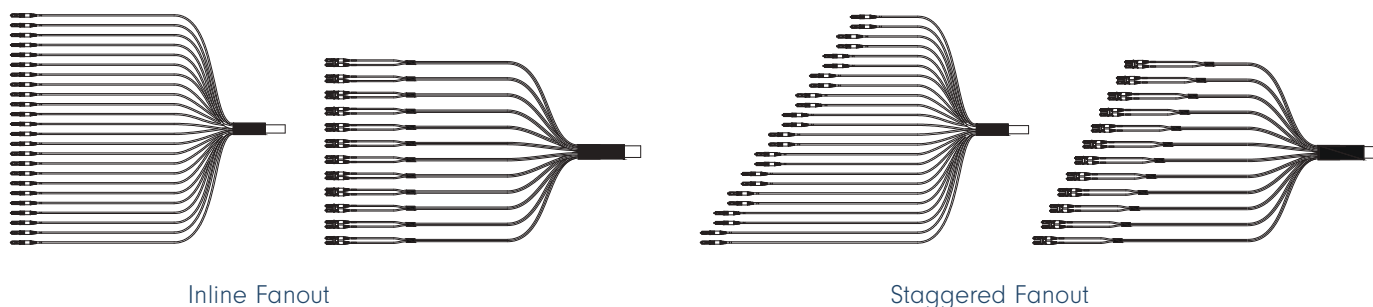
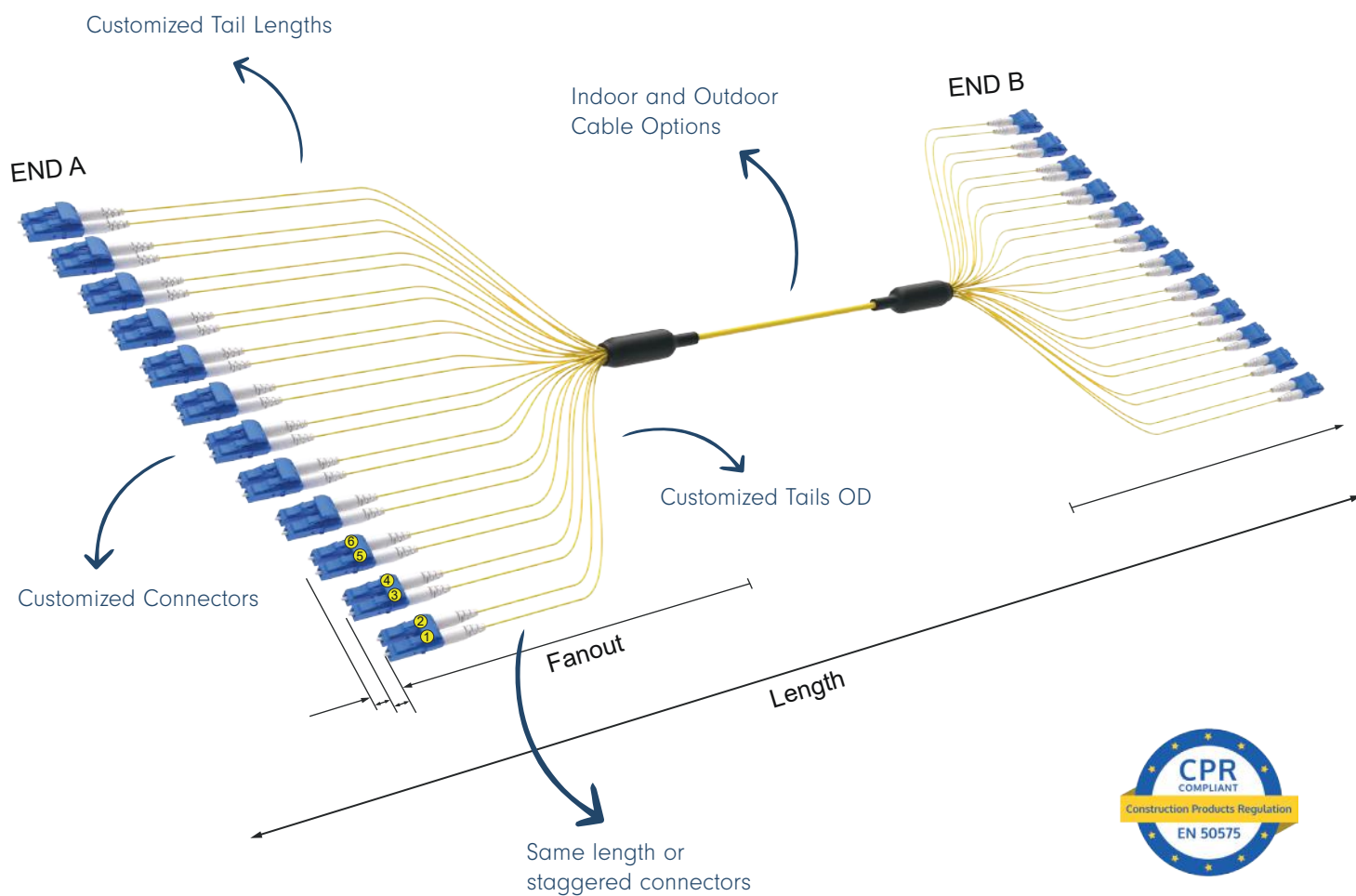
24 Fiber MTP



## PRE-TERMINATED CABLES

NEXCONEC® Pre-Terminated cables are available in various configurations to suit complex network cabling requirements.

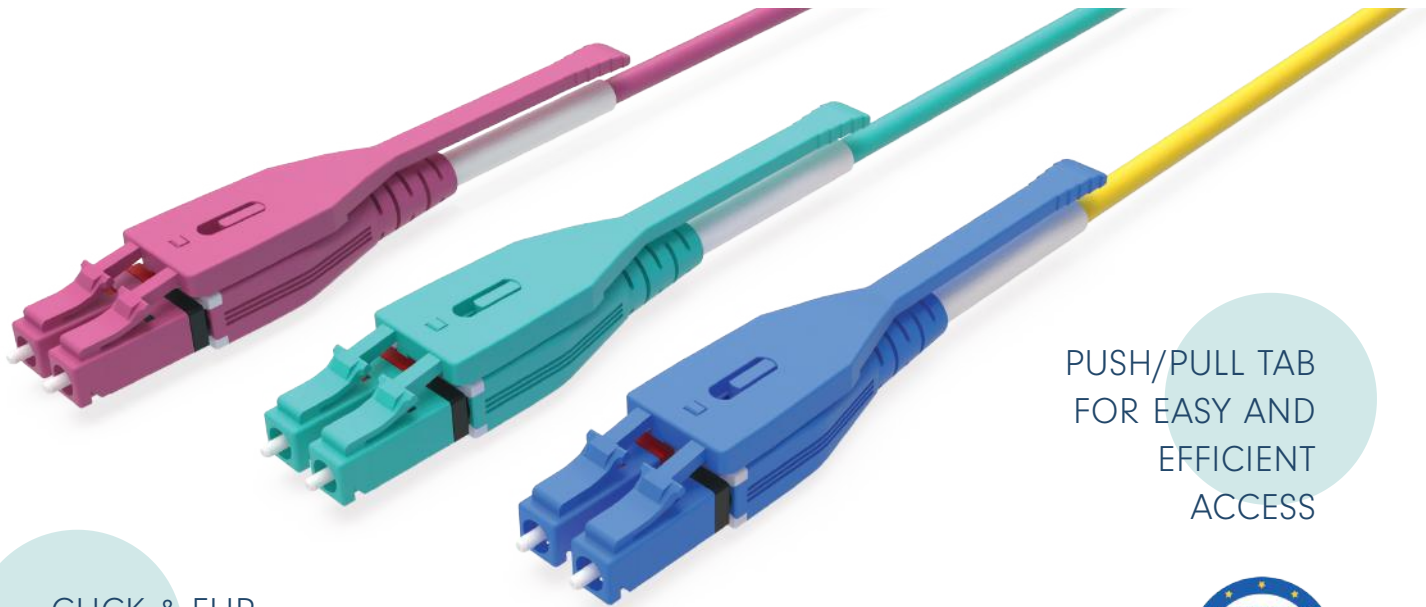
The MTP®/MPO trunks & patchcords are compliant with international standards such as the IEC, EIA/TIA and Telcordia.



## HD REVERSIBLE UNIBOOT LC

NEXCONEC® LC High Density switchable polarity connector is a totally unique design which can increase panel density to its highest while keeping great accessibility. The flexible push and pull tab allows the connector to engage and disengage easily. The connector has an easy mechanism to switch polarity during installation thereby being cost effective at critical times.

The unique design uses uniboot to accommodate 2mm or 3mm jacketed cables to reduce cable density and making cable management easier in today's highly dense applications.



PUSH/PULL TAB  
FOR EASY AND  
EFFICIENT  
ACCESS

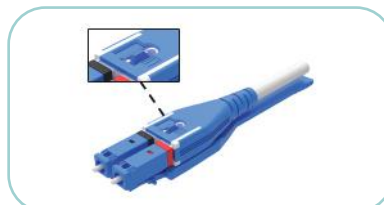
CLICK & FLIP  
POLARITY  
SWITCH



### CLICK & FLIP POLARITY CHANGE PROCESS



HD Reversible Uniboot offers easy and quick installation with polarity change function.



**STEP 1:** CLICK to unlock bottom latch with finger



**STEP 2:** EXTRACT the latch from Uniboot



**STEP 3:** FLIP the connector body to 180 °



**STEP 4:** Push the latch back in until CLICK locks it in

## FIBER TESTING & CLEANING



One Click Cleaner SC FC ST



One Click Cleaner LC



One Click Cleaner MTP/MPO



Cleaner MTP/MPO Ferrules



Cleaner Single Ferrule Connectors



VFL



Handheld Power Meter



Handheld Light Source



## FIBER OPTIC TRANSCEIVERS



SFP Transceivers



SFP+ Transceivers



SFP28 Transceivers



XFP Transceivers



QSFP+ Transceivers



QSFP28 Transceivers



Active Optical Cables - (AOC)



Direct Attach Copper - (DAC)





# COPPER CABLING



### COPPER CABLING

NEXCONEC® offers a full range of copper cables and accessories.



STP Flat Keystone Jack Patch Panels



Copper Shielded Patch Cords



Copper Preterminated Cables







# WE WERE BORN WITH A MISSION

The mission is to be a leader and innovator in network connectivity through superior engineering, manufacturing and customer services capabilities. Dynamic, flexible and customer focused, Nexconec is constantly evolving along with the industry. We develop and manufacture high end innovative solutions for connectivity and structured cabling.

We have very strict manufacturing and development process in place to guarantee the quality of the products. We understand the demands and requirements of the customers, and respond accurately to facilitate the work of each request. We design, specify, and manufacture all aspects of the products using our multi-talented design and engineering teams.

With multiple locations around the globe coupled with our distribution network we know how to best serve you with the greatest attention.

With headquarters in Hong Kong, offices in China, France, Argentina coupled with our distribution network we know how to best serve you with the greatest attention.

# DATA CENTER



Europe



Latin America



Asia-Pac



China

