

OPTICAL FIBER MANAGEMENT SYSTEM

# TELECOM AND FTTx SOLUTIONS

Fiber To The x



WE DESIGN,  
BUILD AND DELIVER  
STATE OF THE ART  
NETWORKING  
PRODUCTS

## FIBER TO THE x

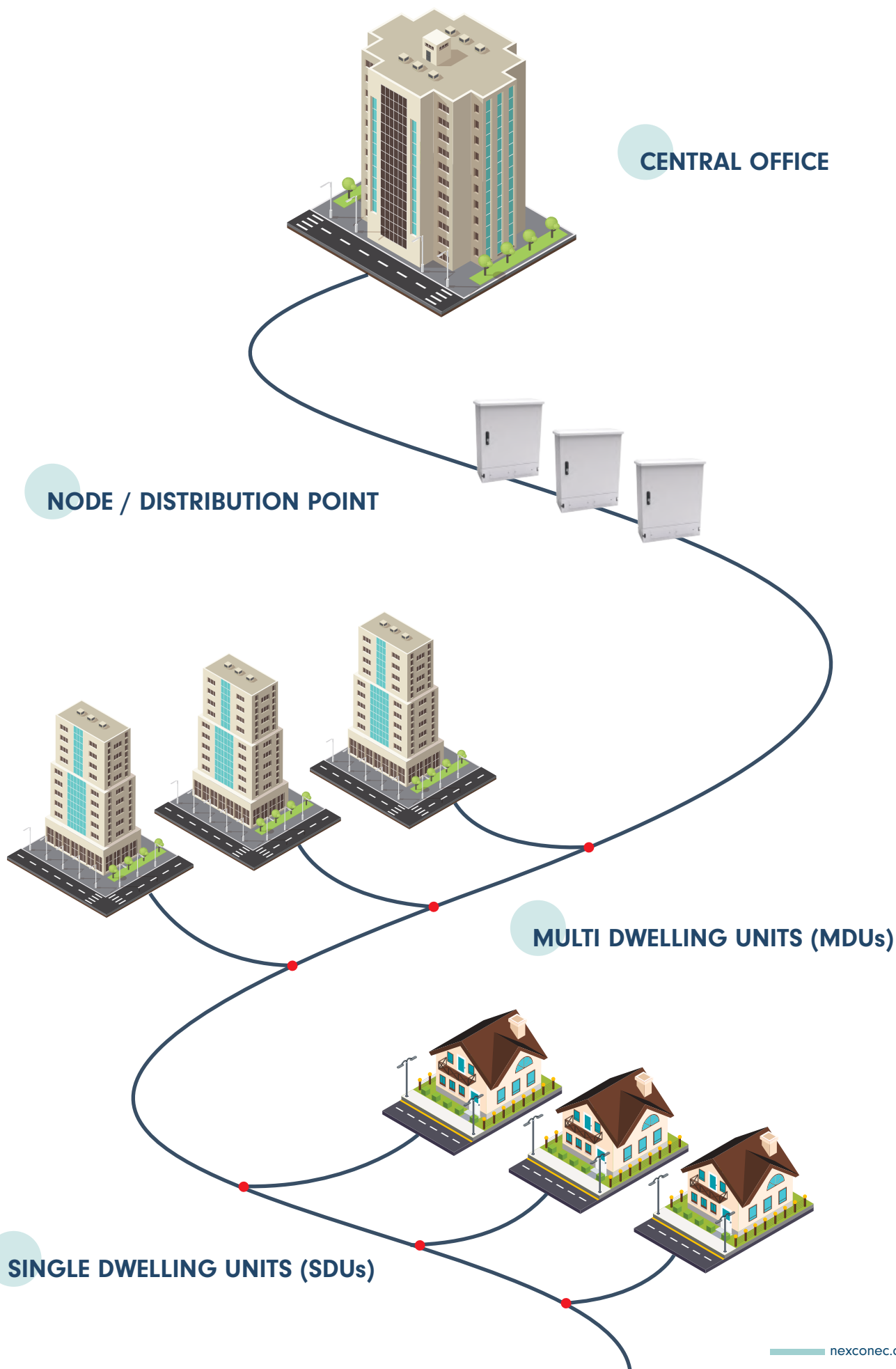
---

Bandwidth demands are increasing and competition to supply highest bandwidth is fierce. Choosing the right high performance connectivity solution for the access network is essential.

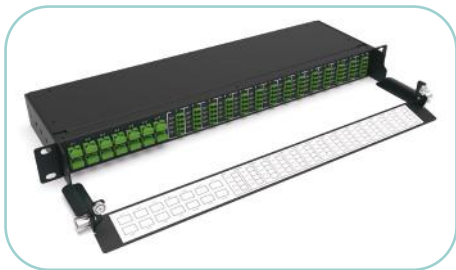
The Nexconec FTTx product range offers a flexible, high specification solution that can be tailored and configured to meet specific network requirements, offering a mix connectivity solutions for the central office/POP, distribution point/node and customer premise.

Fiber to the x is the growing market within the Telecommunications sector. While PONs (passive optical networks) are emerging as the favoured approach by many Operators, PTP (point to point) is being deployed globally. Regardless of the network infrastructure, connectivity plays a fundamental role in the union of a fibre network.

To support the growing applications and opportunities in FTTx Nexconec has developed a complete connectivity solution supported by our own pre-terminated assemblies expertise. Our connectivity solutions are fostered by a range of products for splitting, distribution, patching and splicing. Market demand shows requirements for a modular, easy to use solution that can be tailored for specific customer requirements.



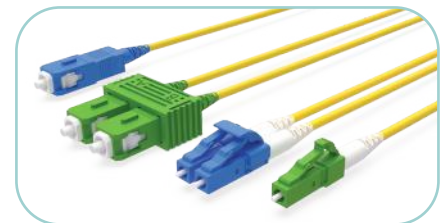
The central office upgrades call for high density, small diameter and tighter bend requirements. Nexconec have developed a suite of high density fiber management solutions for splitting, patching, splicing and winding. The Nexconec pre-terms can be configured to work in most central office applications offering very small trunk and sub unit diameters presenting the strength required for rugged applications. Our range of short and 90 degree boots give the user long term bend management assurances.



Splitter Panels



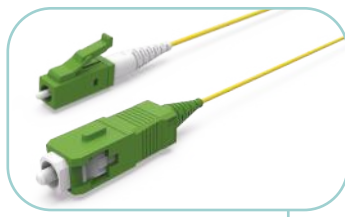
Splitter Assemblies



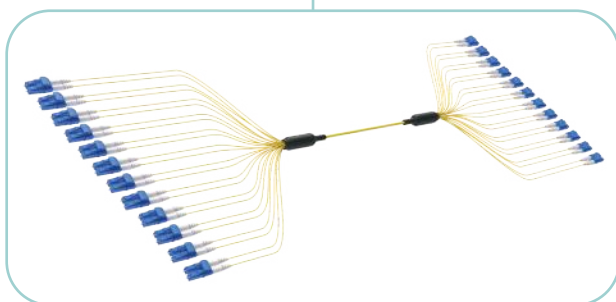
Patch Cords



SFP Transceivers



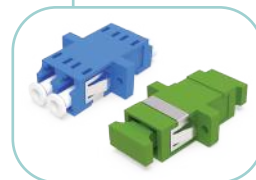
Pigtails



Pre-term Assemblies



Splitter Modules



Fiber Adapters



MUX CWDM Module



Fiber Attenuators



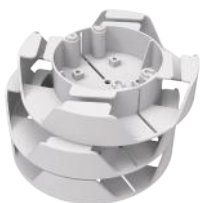
1U 48 Ports Pivot Patch Panel



3U 144 Ports Pivot Patch Panel



1U Rotary Splitter Panel



Fiber Manager Spool



Fiber Splice Tray

## NODE / DISTRIBUTION POINT

Current central office upgrades require high density, small diameter and tighter bend specifications. Nexconec have developed a suite of high density fiber management solutions for splitting, patching, splicing and winding. The Nexconec pre-terms can be configured to work in most central office applications offering very small trunk and sub unit diameters giving the strength required for rugged applications.

Our range of short and 90 degree boots give the user assurance for long term use in a variety of environments.



## NODE / DISTRIBUTION POINT



1U 48 Ports Pivot Patch Panel



3U 144 Ports Pivot Patch Panel



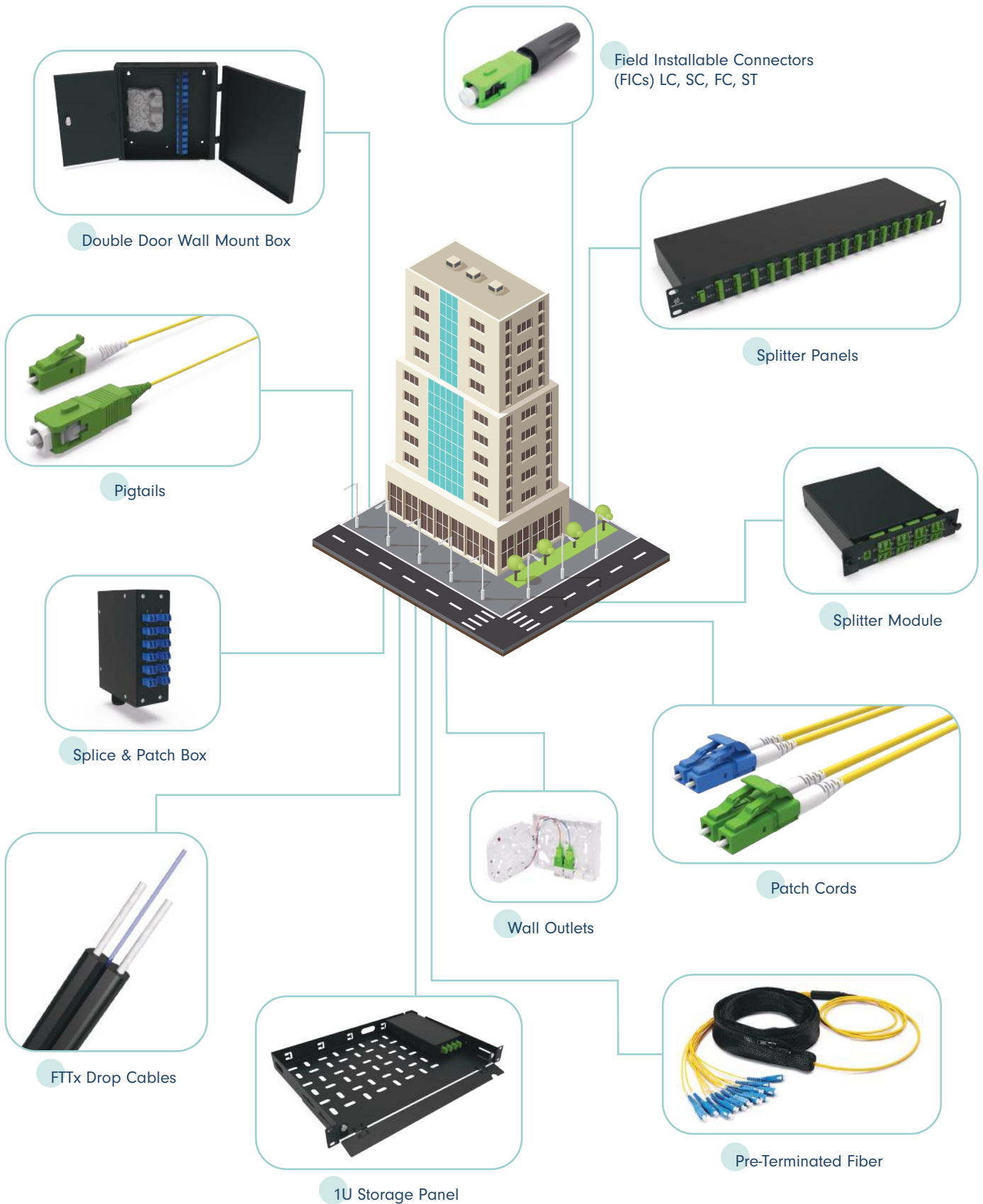
3U Rotary Splitter Panel



Splitter Assemblies

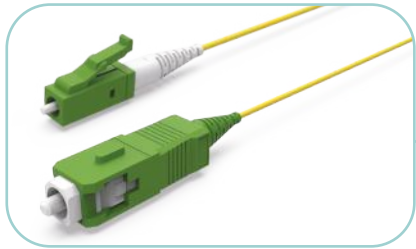
## MULTI DWELLING UNITS (MDUs)

The final drop and customer premise will often involve challenging environments. Rarely are there rarely two similar deployments, Nexconec offers an innovative and flexible design service. Nexconec also offer a range of high performance external and internal fiber connectivity products designed for fast and easy installation.





## SINGLE DWELLING UNITS (SDUs)



Pigtails



Wall Outlets



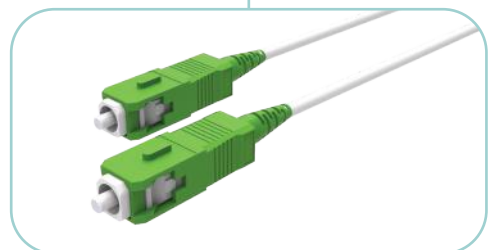
Shuttered Adapters



Field Installable Connectors (FICs) LC, SC, FC, ST

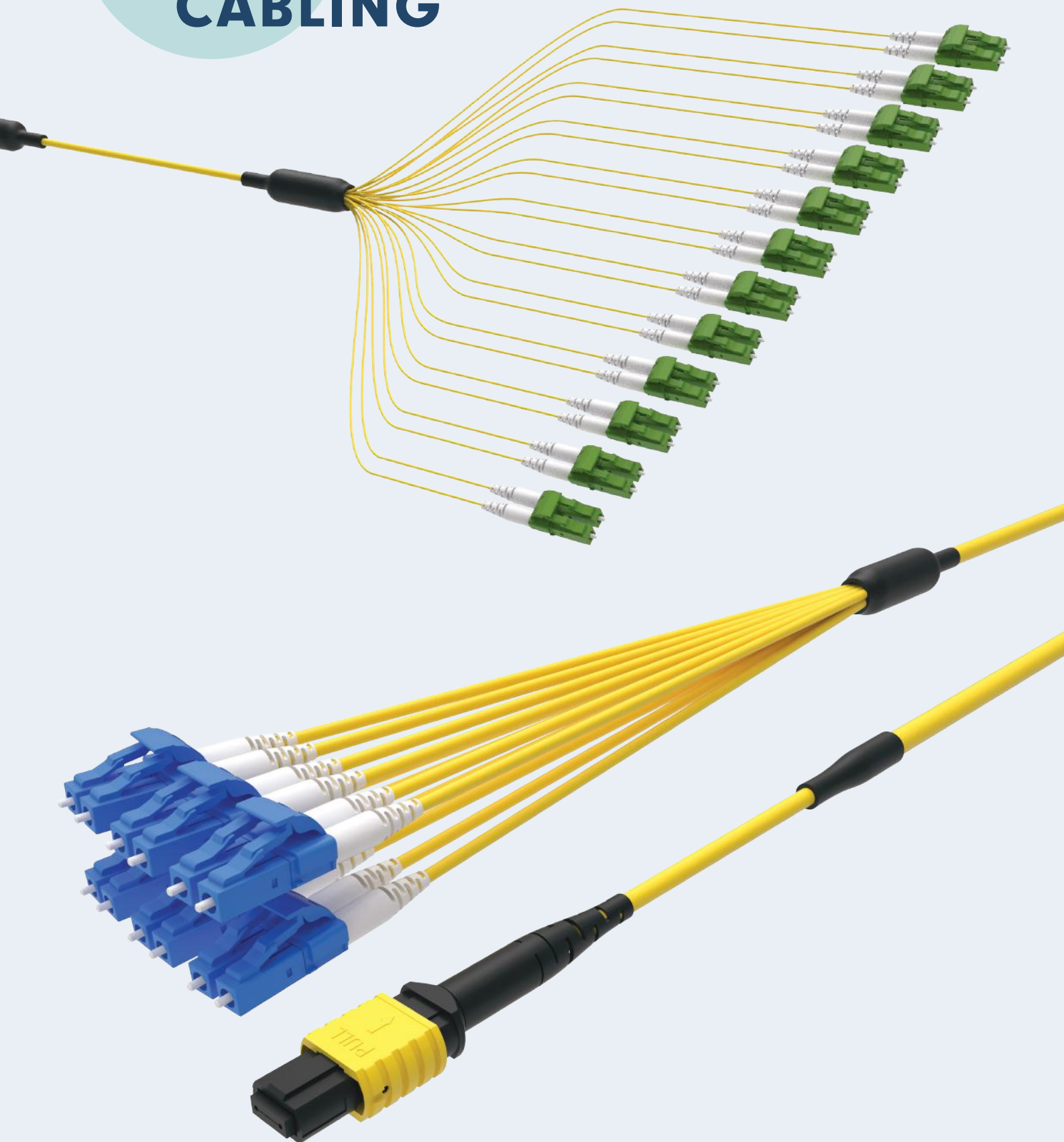


Pre-Terminated Fiber Wall Outlet



Patch Cords

# FIBER OPTIC CABLING



## OUTDOOR ODVA FOR FTTH

Nexconec IP68 ODVA assemblies provide an environmental seal and mechanical protection for outdoor application. ODVA connectors are available in SC Simplex, LC Duplex or MTP/MPO. They provide quick installation solutions and have good performance on mating with ODVA receptacles.



Outdoor Fiber Optic Assemblies



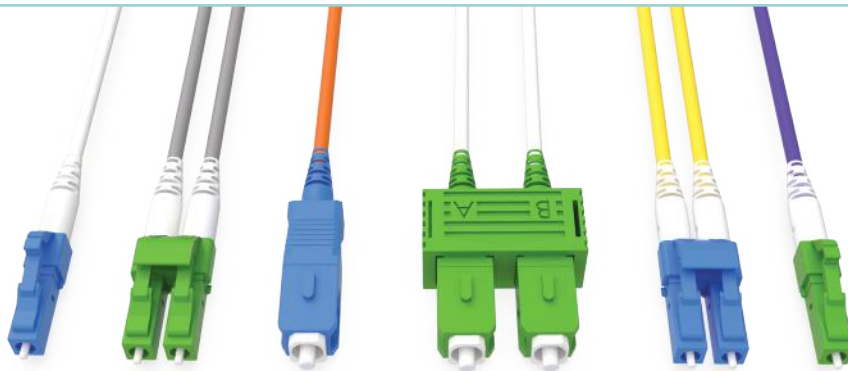
ODVA MPO Box



ODVA Waterproof Box

## SIMPLEX & DUPLEX PATCH CABLES

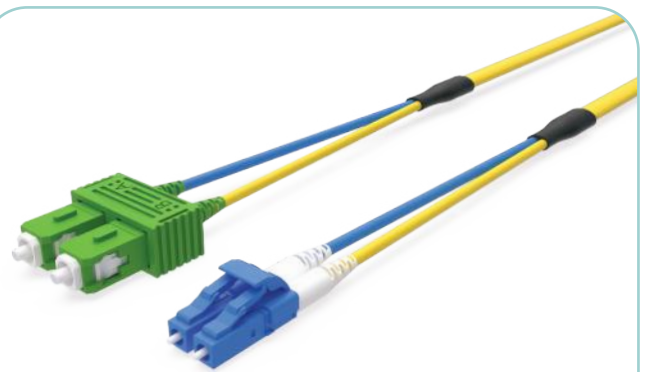
Nexconec Patchcord range is suitable for telecommunication networks, data processing networks, FTTx, FTTH and some critical applications. The patch cords provide flexible interconnection to active equipment, passive optical devices and cross-connect. We offers diverse range of single fiber ferrule connectors, which manufactured with precision factory mounting and polishing techniques to assure high transmission quality.



Patch Cords



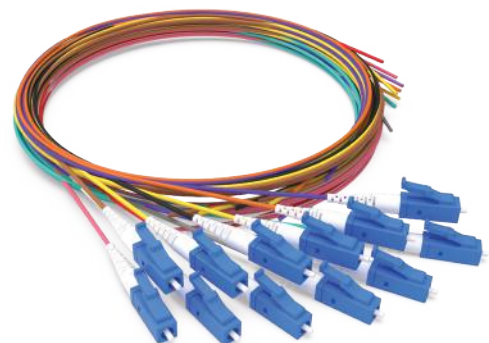
HD Reversible LC Uniboot Patch Cord



Flat Twin Duplex Patch Cord



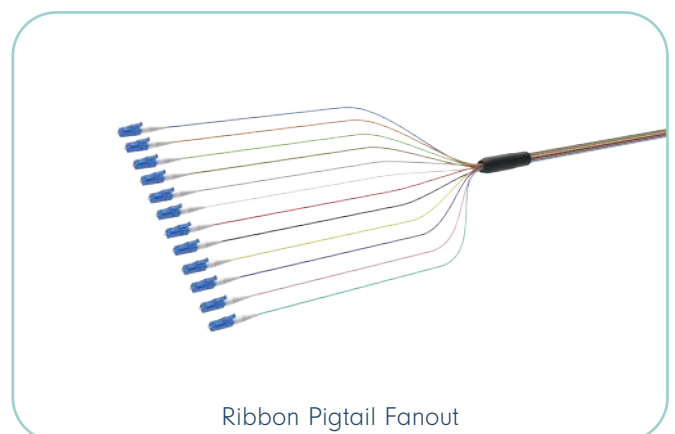
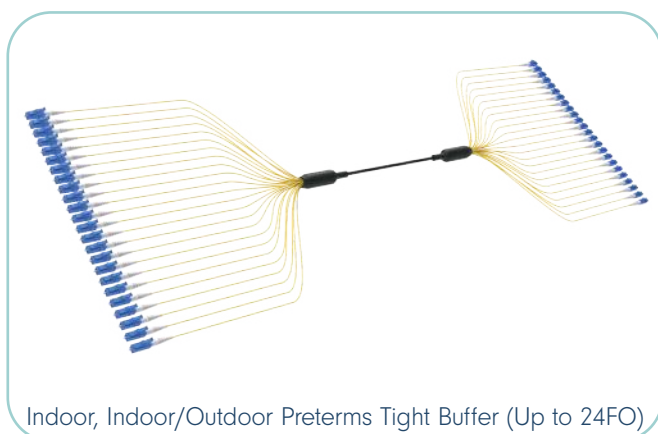
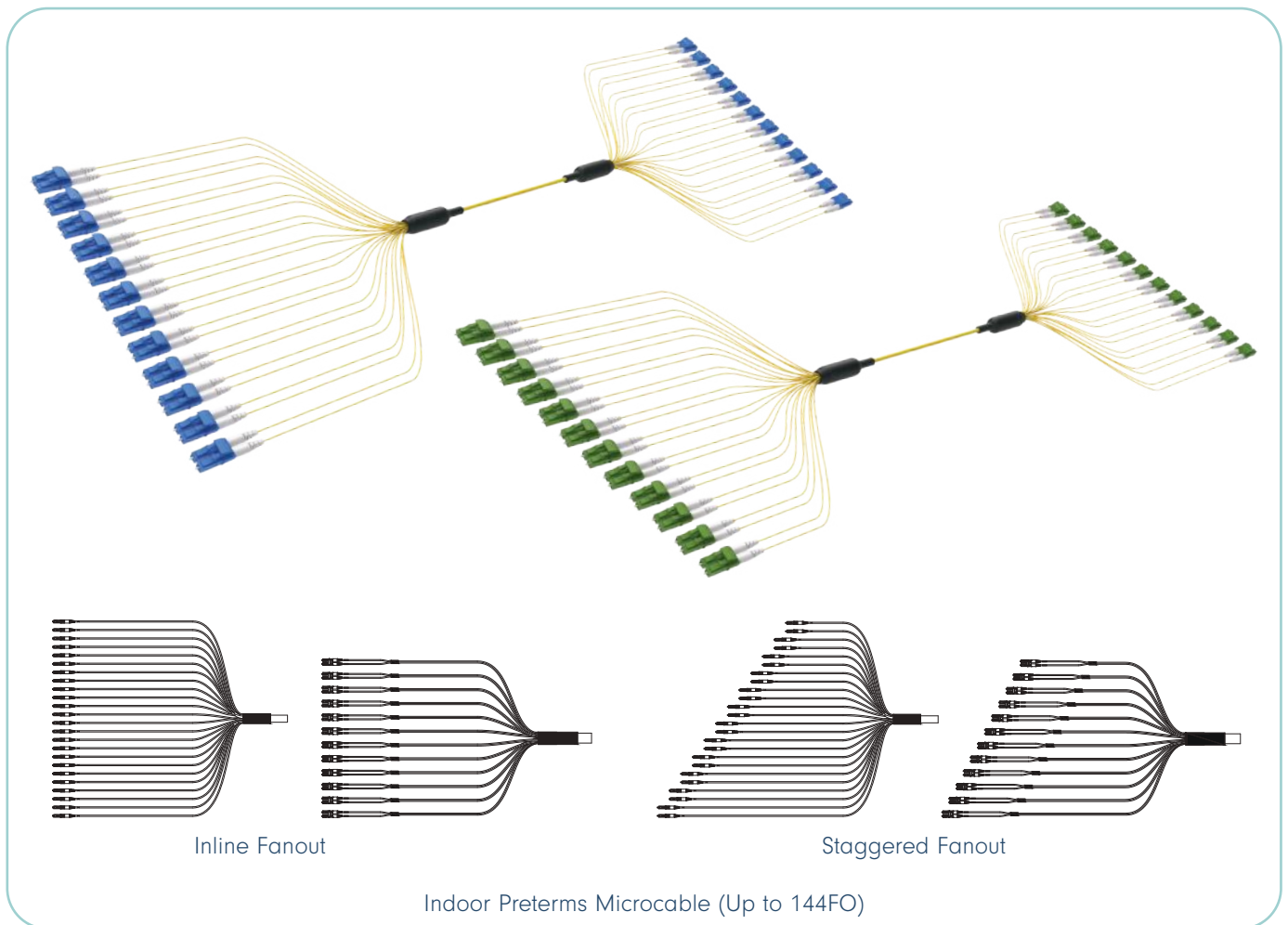
Armored Patch Cord



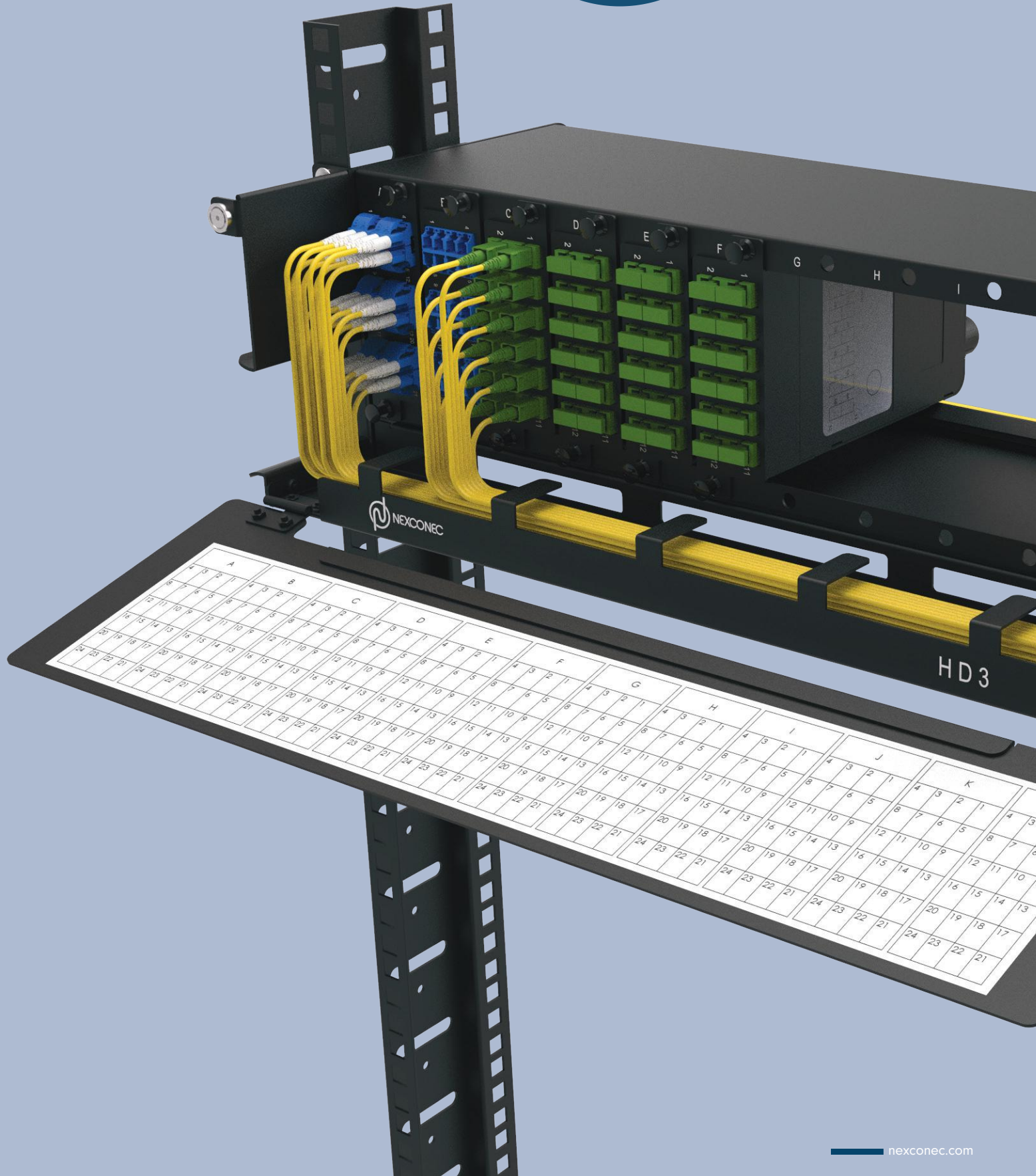
Pigtails

## MULTI-FIBER ASSEMBLIES

Nexconec pre-terminated fiber optic cable solution offers quick and cost-effective installation within an indoor environment or intrabuilding premise. We manufacture indoor/outdoor pre-terms cabling with superior fiber or cable performance, high quality connectors which offers improved link loss budgets. Micro core cables are constructed of up to 144 fibers, 900 $\mu$ m or 2mm simplex cables coated with double jackets and aramid strength members.



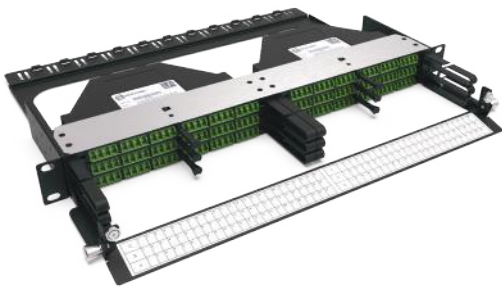
# HIGH DENSITY SOLUTIONS



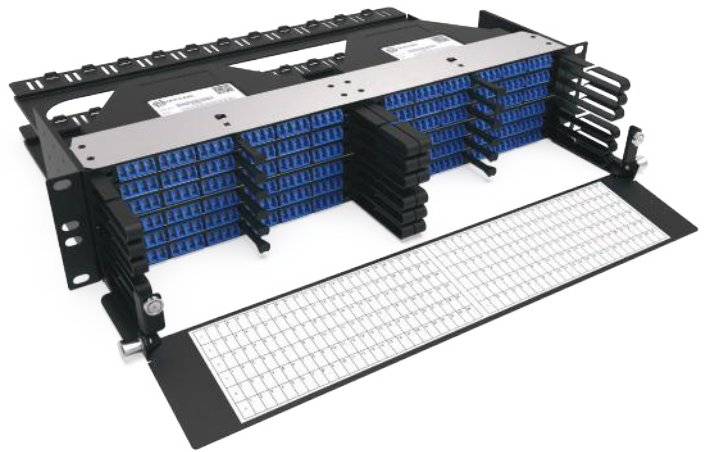
## NGX

NGX solution offers the highest density in a 1U space with variable module options facilitating quick and cost effective installation.

CHASSIS 1U, 2U & 4U  
UP TO 144FO IN 1U  
MODULES  
MTP/MPO, PRECONNECTED, DIRECT PATCH, SPLICING, COPPER  
FRONT AND REAR MANAGEMENT  
ACCESS TO FRONT AND REAR MODULES  
IDENTIFICATION OF EACH OPTICAL PORT



1U NGX HD Modular Panel (Up to 144FO)



2U NGX HD Modular Panel (Up to 288FO)



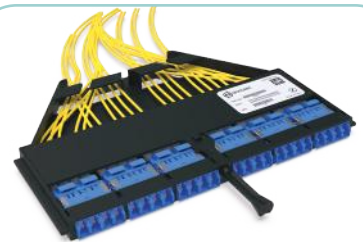
1U NGX HD Angled Modular Panel (Up to 144FO)



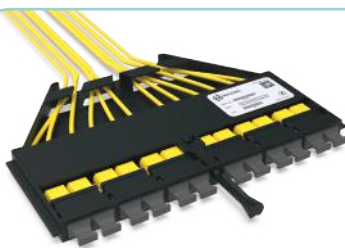
NGX Cassette MTP/MPO



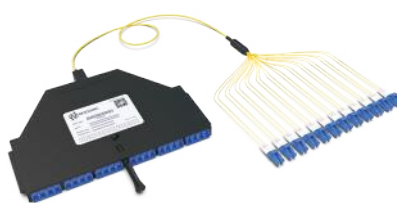
NGX Splice Cassette



NGX Patching Cassette



NGX MTP/MPO Patching Cassette



NGX Pre-terminated Cassette



NGX Zero RU Bracket

## HD

The HD solution consists of different 1U modular chassis and panel options that can support up to 96FO in 1U to 3U. The HD solution is compatible with MTP/MPO-LC modules and different adaptor plates.

CHASSIS AND PANEL 1U AND 3U  
FRONT OR REAR MANAGEMENT  
IDENTIFICATION OF EACH OPTICAL PORT



1U 4 Slots HD Modular Fixed Frame



3U 12 Slots HD Modular Fixed Frame (Up to 288FO)



1U 4 Slots HD Modular Sliding Panel



HD Cassette MTP/MPO



HD Cassette MTP/MPO (Type-B)



HD Splice Cassette



HD Dual Fiber 8CH MUX CWDM



HD Adapter Plates



HD Modular Keystone Jack Module



## LGX

LGX footprint is a classic in our industry. Our LGX range offers several drawer and chassis options from 1U to 4U. The LGX panels are compatible with our plastic MTP/MPO-LC modules, splicing cassettes and adaptor plates.

CHASSIS AND PANEL 1, 2, 3 AND 4U  
FRONT OR REAR MANAGEMENT  
IDENTIFICATION OF EACH OPTICAL PORT



1U 3 Slots LGX Modular Fixed Frame



3U 14 Slots LGX Modular Frame (Up to 336FO)



1U 3 Slots LGX Sliding Patch Panel



LGX Cassette MTP/MPO



LGX Splice Cassette



LGX Adaptor Plates



Retrofit Plate CCH to LGX

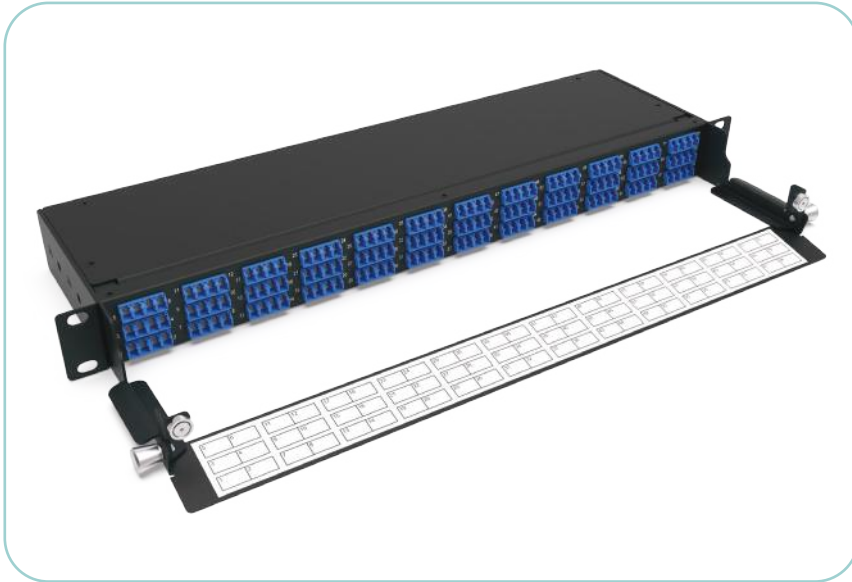


LGX Keystone Jack Module



LGX Zero RU Bracket

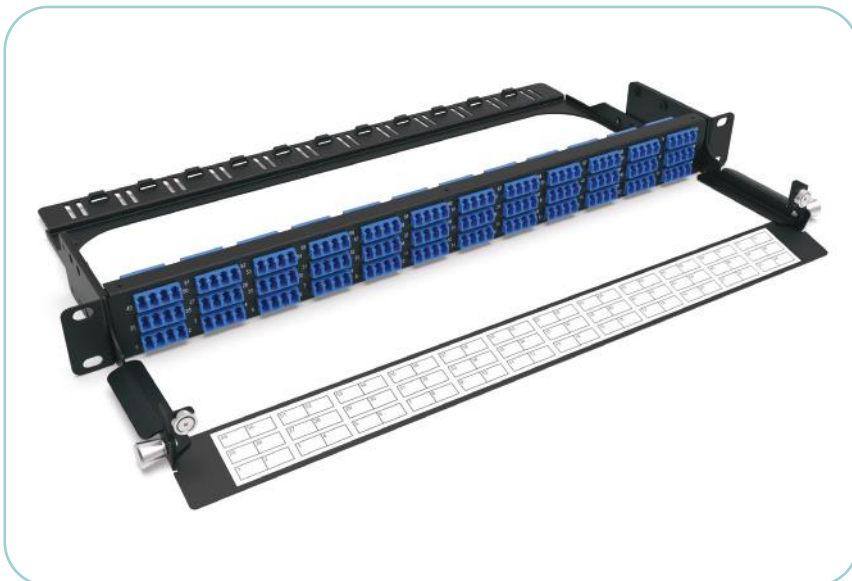
## MPO-LC PANEL 144FO



CHASSIS 1U  
UP TO 144FO IN 1U  
FRONT AND REAR MANAGEMENT  
IDENTIFICATION OF EACH OPTICAL PORT

The MPO-LC Panel 144FO offers ultra high density in a compact 1U enclosure for quick and cost effective installation. Easy routing of cables with front and rear management.

## PATCHING PANEL 144FO



CHASSIS 1U  
UP TO 144FO IN 1U  
FRONT AND REAR MANAGEMENT  
IDENTIFICATION OF EACH OPTICAL PORT

The 1U 144 LC panel is designed for direct patch for interconnection between equipments. Easy routing with front and rear management.

## PIVOT PANELS

Nexconec Rotary Patch Panels are designed to accept up to 48 SC Simplex adapters per 1U. We provide different versions from 0.5U to 3U being 144FO in SC configuration. Panels can be fully loaded with pigtails and splicing accessories.



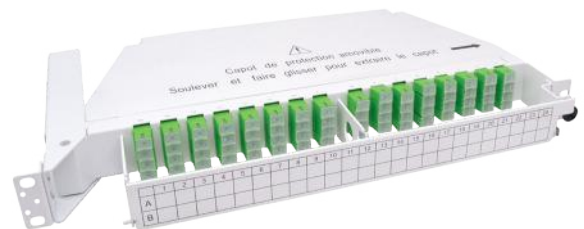
0.5U 24 Ports SC Simplex/LC Duplex Pivot Patch Panel



1U 48 Ports SC Simplex/LC Duplex Pivot Patch Panel



3U 144 Ports SC Simplex/LC Duplex Pivot Patch Panel



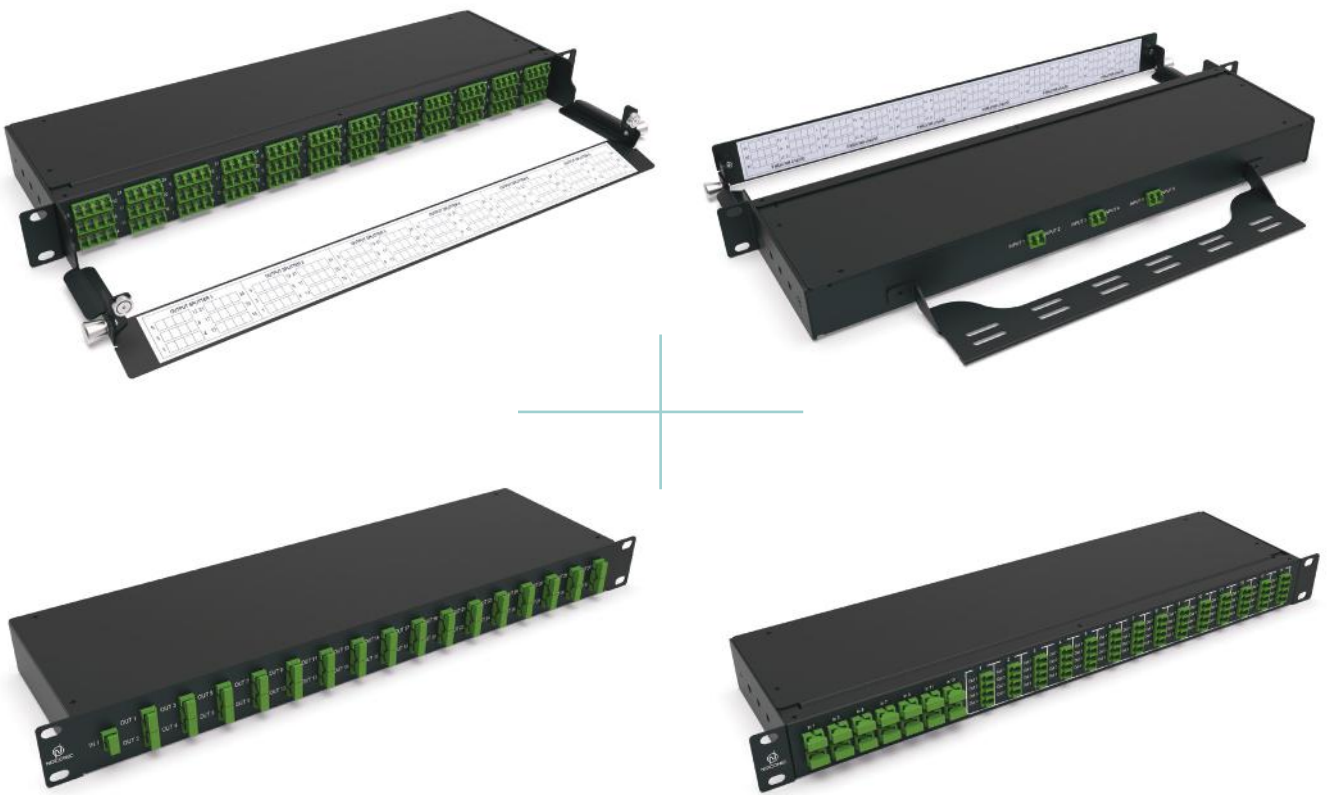
1U Fiber Optical Rotary Splitter Panel



3U Fiber Optical Rotary Splitter Panel

## SPLITTERS PANELS & MODULES

Nexconec provides a large product portfolio of customized PLC Splitters 1xN and 2xN in different formats such as modules pre-terminated with connectors tails, Plug and Play modules or directly into rack mount panels.



Rack Mount Splitters



Splitter Assemblies



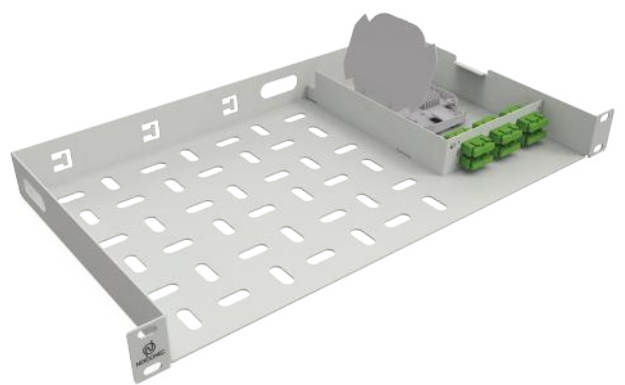
Splitter Modules

## STORAGE PANELS

Nexconec 1U fiber cable storage panel box, mounted on 19" network racks, cabinets for fibers, cables storage. Use this fiber cable storage patch panel in the telecommunication room, data centers to storage excess fibers and cables. It could make your fiber cable management neat and professional.



1U 4 Ports SC Fiber Panel & Shelf



1U 12 Ports SC Fiber Panel & Shelf



1U Fiber Storage Sliding Panel



### INLINE/DOME ENCLOSURES

The fiber dome closure family has earned its reputation for reliable protection of fiber optic facilities - delivering a full line of closures and accessories. Now, it also includes new models and configurations for more flexibility to meet the complex needs of today's fiber optic networks.

Nexconec Inline/Dome Closures are the best designed and innovative solution for fiber cabling installation.



Inline Enclosure OC-IN01



Heat Shrink Dome Enclosure OC-DO01



Mechanical Dome Enclosure OC-DO02



Dome Enclosure OC-DO03



Inline Enclosure OC-DO03A



Inline Enclosure OC-DO03B/C



Dome Enclosure OC-DO05



Dome Enclosure OC-DO06



Dome Enclosure OC-DO07



Dome Enclosure OC-DO08



Dome Enclosure OC-DO09

## INDOOR/OUTDOOR WALL BOXES

Nexconec wall box solutions are ideal for demarcation wiring and rack-room cable management & incorporate the latest in cutting-edge technology, helping to deliver unmatched savings in installation time, labor costs and performance in all fiber networks.



Lockable Indoor/Outdoor Wall Box  
6 Ports SC - WP06U1



Indoor/Outdoor Wall Box  
8 Ports SC - WP08U1



Lockable Indoor/Outdoor Wall Box  
8 Ports SC - WP09U1



Lockable Indoor/Outdoor Wall Box  
12 Ports SC - WP12U1



Lockable Indoor/Outdoor Wall Box  
24 Ports SC - WP24U1



Lockable Indoor/Outdoor Wall Box  
48 Ports SC - WP48U1

## INDOOR WALL OUTLETS



Pre-Terminated Fiber Wall Outlet - FWO



FTTH Subscriber Wall Outlet - WO01/02



FTTH Wall Outlet 4 Ports SC SX - WO03



FTTH Wall Outlet 4 Ports SC - WO04



FTTH Wall Outlet 2ports - WO05



Fiber Faceplate - WO06/07

## FIBER TESTING & CLEANING



One Click Cleaner 2.5 mm



One Click Cleaner 1.25 mm



One Click MPO Cleaner



Cassette Cleaner MT Ferrules



Cassette Cleaner



VFL



Handheld Power Meter



Handheld Light Source



FIBER OPTIC TRANSCEIVERS



SFP Transceivers



SFP+ Transceivers



SFP28 Transceivers



XFP Transceivers



QSFP+ Transceivers



QSFP28 Transceivers

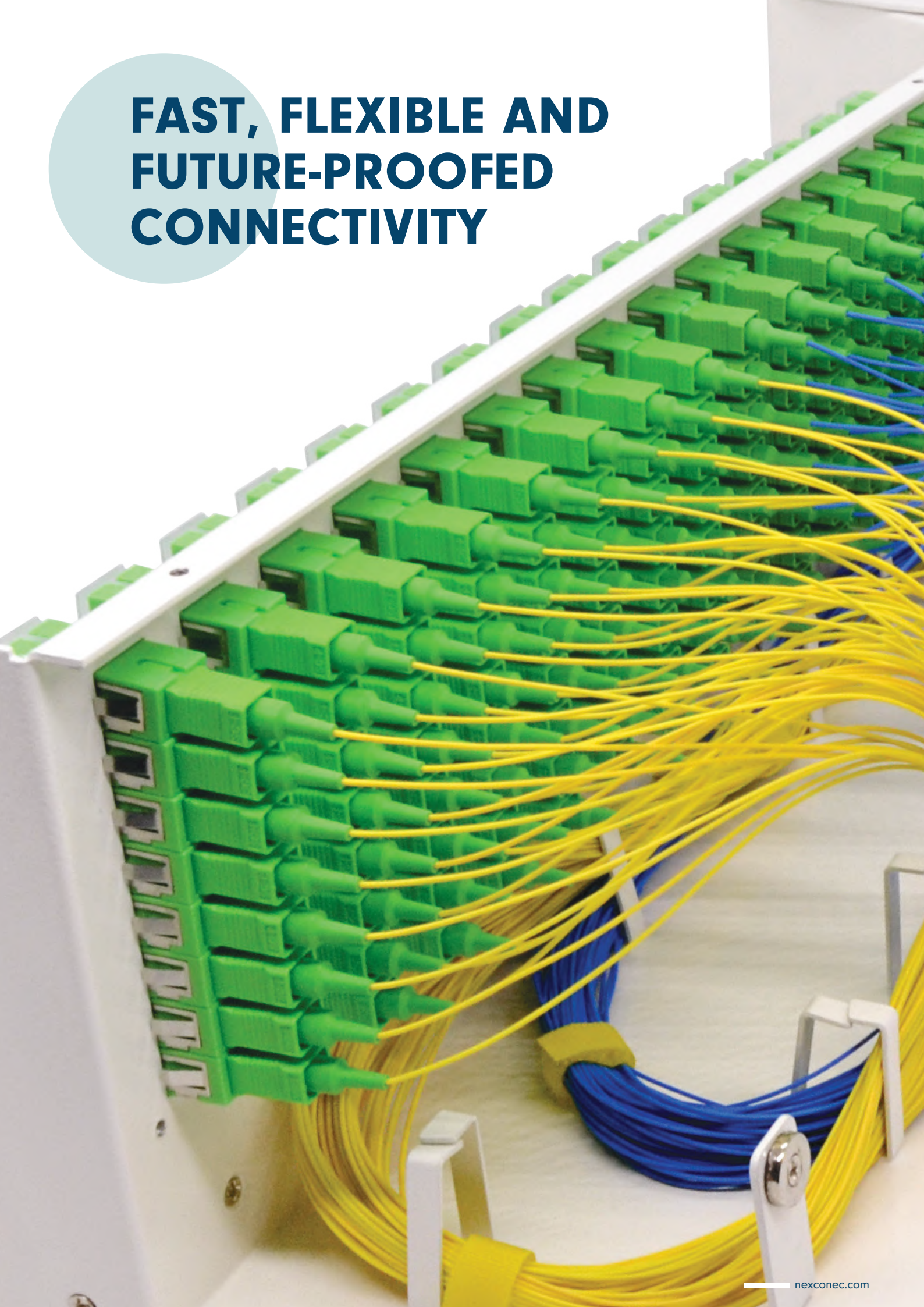


Active Optical Cables - (AOC)



Direct Attach Copper - (DAC)

**FAST, FLEXIBLE AND  
FUTURE-PROOFED  
CONNECTIVITY**



# WE WERE BORN WITH A MISSION

The mission is to be a leader and innovator in network connectivity through superior engineering, manufacturing and customer services capabilities. Dynamic, flexible and customer focused, Nexconec is constantly evolving along with the industry. We develop and manufacture high end innovative solutions for connectivity and structured cabling.

We have very strict manufacturing and development process in place to guarantee the quality of the products. We understand the demands and requirements of the customers, and respond accurately to facilitate the work of each request. We design, specify, and manufacture all aspects of the products using our multi-talented design and engineering teams.

With multiple locations around the globe coupled with our distribution network we know how to best serve you with the greatest attention.

With headquarters in Hong Kong, offices in China, France, Argentina coupled with our distribution network we know how to best serve you with the greatest attention.

OPTICAL FIBER MANAGEMENT SYSTEM

# TELECOM AND FTTx SOLUTIONS

Fiber To The x



Europe



Latin America



Asia-Pac



China



✉ [sales@nexconec.com](mailto:sales@nexconec.com)  
🌐 [www.nexconec.com](http://www.nexconec.com)

