

Engineered Cabling Solution Manufacturer



We design, build and deliver state of the art networking products.

www.nexconec.com  
sales@nexconec.com



Your Local Nexconec Approved Distributor



Copyrights © Nexconec - All Rights Reserved. | Version : EN 24.3 3.1-2024  
Nexconec and  are registered trademarks | Xconec and  are registered trademarks by Nexconec.

# CONNECTIVITY SOLUTIONS

## CATALOGUE 2024

We design, build and deliver state of the art networking products.

[nexconec.com](http://nexconec.com)

## ABOUT NEXCONEC

NEXCONEC is a leader and innovator in network connectivity via superior engineering, manufacturing and customer services capabilities.

NEXCONEC is serving the connectivity needs for mission critical data center, telecom and enterprise applications. The market is driven by business and consumer's thirst for high speed data in increasingly mobile work and life styles. Our products make reliable connections between networking and data storage equipment. We provide both end to end infrastructure cabling solutions and sub-components to our partners' systems.

NEXCONEC refreshes the traditional cabling industry with technology, innovation and manufacturing capabilities. Our products are "built to measure", "built to suit" and tailored to customers' specific projects and deployments. With our own ISO-9001 certified manufacturing facilities, we design and manufacture high quality products cost effectively and bring the best value to our customers.



**EUROPE**  
81 Chemin des Platières  
38670 Chasse-sur-Rhône  
France



**LATAM**  
3548, Gral Machain  
Lanus, Buenos Aires  
Argentina



**ASIA PAC**  
2007 Westley Square  
48 Hoi Yuen Road  
Kwun Tong District  
Hong Kong



**CHINA**  
13G/H Golden Century Bldg.  
6033, Shennan Blvd  
Futian, Shenzhen  
China

### ✓ Engineered Solutions Manufacturer

Nexcotec has state-of-the-art equipment and processes to ensure we manufacture solutions that provide you with the application flexibility and product performance you need most. This enables our talented engineering and manufacturing teams to produce designs that are unique to you. Nexcotec engineers can supply complete cable-assemblies & Fiber management solutions that are custom-engineered, tested and ready for installation.

### ✓ Technical Services

Taking an end-to-end approach, our team of skilled engineers work hand in hand with your team to cater for your specific needs, from design and development to production and shipping. Growing with the fiber-optics industry, we have accumulated invaluable knowledge and insights which offer a distinct advantage to our customers.

### ✓ Quick Turnaround Manufacturing

Product availability is essential to service customers especially in DC environment. As a result our manufacturing facilities are based around very short production lead time and minimum MOQ requirements. Nexcotec offers one of the fastest response time and flexibility.

### ✓ High Density Fiber Connectivity

Nexcotec High Density solutions deliver many benefits including high performance, rapid and flexible installation. It offers cost-effective and non-disruptive migration to 40Gbit/sec and 100Gbit/sec while maintaining 100% fiber utilization, as well as supporting for up to 144LC optics in a 1U housing, thereby addressing important space, capacity and scalability challenges. We created a complete pre-terminated range for quick deployment for Indoor and Outdoor application.

### ✓ Custom Assemblies

Nexcotec refreshes the traditional cabling industry with technology, innovation and manufacturing capabilities. Our products are "built to measure". "built to suit" and tailored to customers specific projects and deployments. With our own ISO-9001 certified factory, we design and manufacture high quality products cost effectively and bring the best value to our customers.

### ✓ Contract Manufacturing

Our tightly controlled State of the Art ISO-9001 certified facilities offer large scale manufacturing services for OEM and ODM partners. Nexcotec sets the manufacturing quality standards with plant Qualification, Specs of raw material and components to Production and finally Logistic service. As an Original Design Manufacturer, we offer private labeling programs with rebranding.



### Datacenter

Nexconec has a strong experience in providing Fiber Connectivity solutions for Data Centre applications. The unique benefits of Nexconec is that we design, specify and manufacture all aspects of our products utilising our multi talented skilled design and engineering teams support practical knowledge of installation practises and challenges. We also provide consultancy to our customers in ensuring that their requirements are met.

- 1 QSFP 40G-10G SFP Fan out MPO-LC
- 2 MTP/MPO Trunks
- 3 4U 24 Slots NGX Modular Patch Panel
- 4 NGX 24FO Splice & MPO Modules
- 5 HD Quick Release Patch cord
- 6 1U 6 Slots NGX Angled Modular Patch Panel



### Enterprise LAN

Connectivity the skeleton of any ICT infrastructure installation, which is why we supply only the best cabling and connectors, including structured cabling solutions for simplified installation.

Nexconec will work with you to create an end-to-end network infrastructure solution that improves enterprise management and control. From the data center to telecommunications room to office environments.

A full range of copper and fiber cable products are available from the fiber backbone to the end-user jack outlet.

- 1 Rack Mount Enclosures
- 2 Pre-Terminated Cables
- 3 Copper Patch Panel
- 4 Copper Cables
- 5 Copper Patch Cords
- 6 Faceplates



## Telco & FTTx

The central office is the heart of the network. With reliability being critical, you need products that optimize your network's capabilities. Nexconec hardware solutions simplify the design and deployment of the telecommunication rooms with versatile product families that offer industry-leading density and flexibility and provide the lowest total cost of ownership.

High-density fiber management system that provides a balance of industry-leading density with innovative jumper routing. The system can be deployed in multiple applications including: central office, FTTx and data center. Nexconec solutions are specifically designed for FTTx applications and is available with a variety of splitter solutions that can be co-located within the same hardware frame.

- 1 Outdoor Splice Enclosure
- 2 Outdoor Fiber Cables
- 3 Street Cabinet
- 4 Wall Mount Modular box
- 5 Termination box
- 6 Drop Cable & Patch Cords
- 7 FTTH Customer Outlet
- 8 FTTH Preterminated Wall Outlet



## CONTENTS

### CABLES ASSEMBLIES

Pre-terminated Indoor Cables	8
Pre-terminated Outdoor Cables	9
Patch Cords	10
Armored Patch Cords	11
Pigtails	12

### MTP®/MPO ASSEMBLIES

MTP®/MPO Base-12 Trunks	14
MTP®/MPO to LC/SC Base-12 Fanouts	15
MTP®/MPO QSFP Base-8 40G Trunks	16
MTP®/MPO to LC QSFP Base-8 40G Fanouts	17
MTP®/MPO Base-24 Trunks	18

### FIBER MANAGEMENT

NGX High Density Rack Mount Modular Solutions	20
HD Rack Mount Modular Solutions	24
LGX Rack Mount Modular Solutions	28
MP2 Sliding Splice Patch Panels	32
1U & 2U Sliding Patch Panels	35
MTP/MPO Breakout Patch Panel	36
1U Patching Panel (Up to 144FO)	37
Pivot Patch Panels	38
Wall Mount Modular Box	39
Din Rail Box	41
Fiber Management Accessories	42
Zero RU Bracket	44
Overhead Rack	45
Fiber Testing & Cleaning	46

### FIBER CABLES, FTTH & TELECOM

Indoor Cables	48
Outdoor Cables	49
Outdoor Enclosures	50
FTTH Distribution Boxes	51
FTTH Wall Outlets	53
FIC Field Installable Connectors	53
Pre-assembled Connectors	54
Passive Components	55
Outdoor ODVA	56
Deployable Tactical Fiber Optic Outdoor Cable Assemblies	57

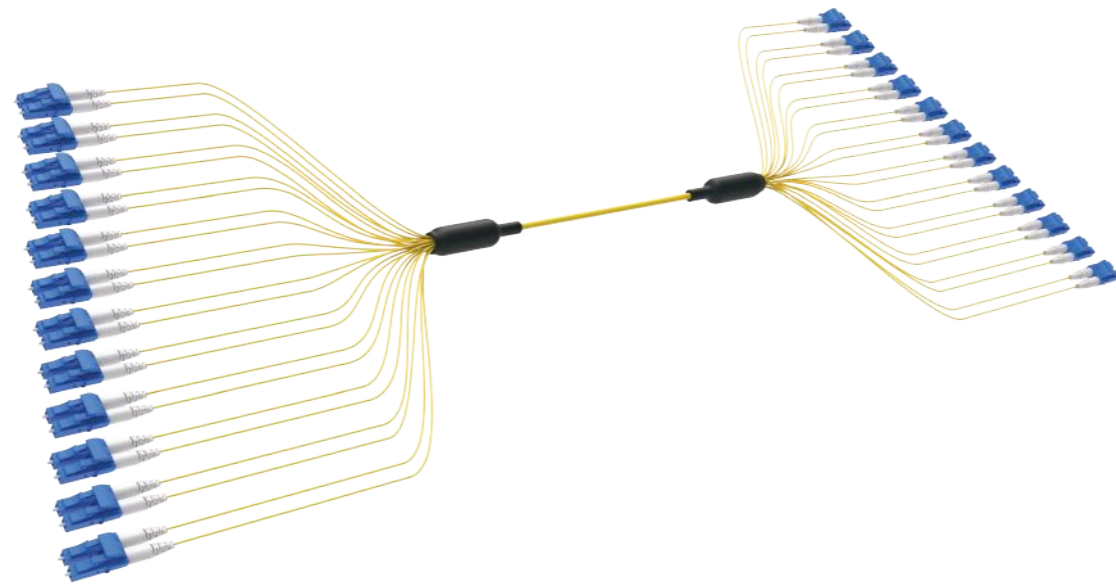
### COPPER STRUCTURED CABLING

Copper Pre-terminated Cabling	59
Category 6A UTP	60
Category 6A FTP Shielded	61
Category 6 UTP	62
Category 6 FTP Shielded	63
Category 5E UTP	64
Panels and Accessories	65
Power Cords C13-C14	66

### ACTIVE COMPONENTS

Fiber Media Converters	68
SFP Transceivers	69
QSFP Transceivers	70
XFP Transceivers	71
AOC & DAC Transceivers	72

## PRE-TERMINATED INDOOR CABLES



Get to Know More



NEXCONEC Indoor Preterm offers quick and cost-effective installation within an indoor environment or intrabuilding premise. We manufacture preterm with superior fiber/cable performance, high quality connectors which offers improved link loss budgets. Micro core cables constructed of up to 144 fibers, 900µm or 2mm simplex cables coated with double jackets and aramid strength members. Available in different grade of CPR certified cables.

### FEATURES

- Conform to IEC, EIA-TIA, and Telcordia performance requirements
- Available in standard Single-mode and Multimode fiber options
- Available in LC, SC, FC, ST and other connector types
- Available with our standard pulling system
- RoHS, REACH & SvHC compliant, Materials Conflict compliant
- Cable jacket available in PVC, LSZH and UL rated material options
- CPR Euro classes certified on demand

### APPLICATIONS

- Telecommunication networks
- Data centers, Co-location DC
- LAN or Campus wide Network
- Broadband network
- Supports up to 100G applications

### CONNECTOR SPECIFICATION

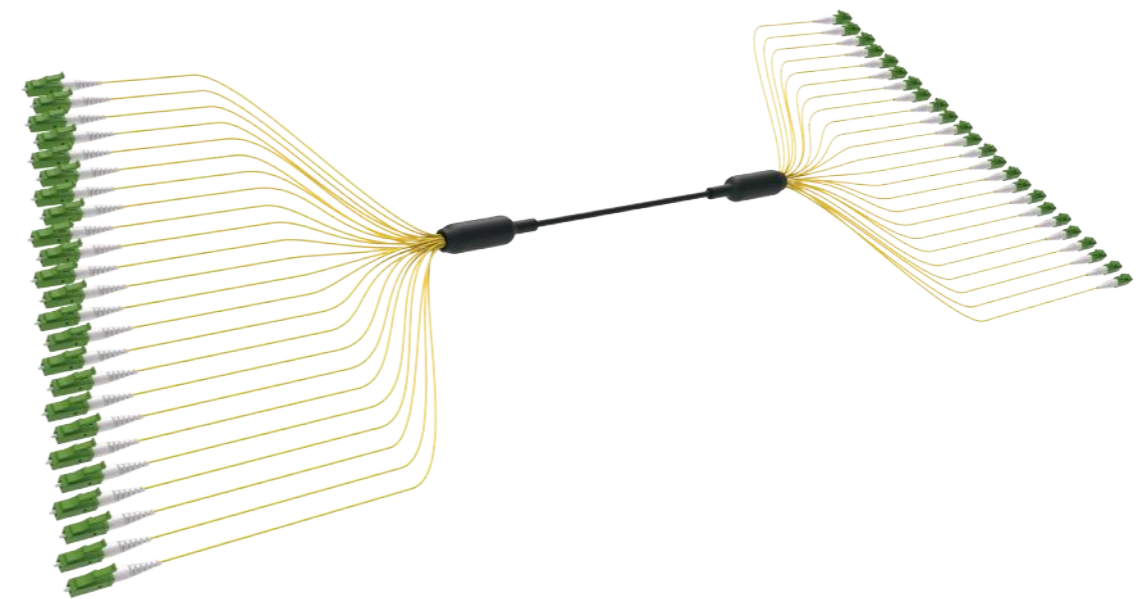
Parameters	IL- Max	IL - Typical	RL(PC/APC)
SM – Standard	≤0.30 dB	≤0.20 dB	> 55/65 dB
SM – Premium	≤0.15 dB	≤0.12 dB	> 55/65 dB
MM – Standard	≤0.30 dB	≤0.18 dB	> 28 dB
MM – Premium	≤0.15 dB	≤0.08 dB	> 28 dB

### ORDER INFORMATION

Ask Sales for Order Details: [sales@nexconec.com](mailto:sales@nexconec.com)  
 Or Contact Us by filling website contact form, one of our colleagues will get back to you shortly!



## PRE-TERMINATED OUTDOOR CABLES



Get to Know More



NEXCONEC Indoor & Outdoor Preterms offers quick and cost effective installation for interbuilding, LAN or Campus wide network. Our outdoor preterms are available in Loose tube, Armoured loose tube and Tight Buffer cable options with special designed modules to breakout individual fibers. We manufacture preterms with superior fiber /cable performance to withstand outdoor harsh environment and high quality connectors which offers improved link loss budgets.

### FEATURES

- Conform to IEC, EIA-TIA, and Telcordia performance requirements
- Available in standard Single mode and Multimode fiber options
- Available in LC, SC, FC, ST and other connector types
- Pulling system optional
- RoHS, REACH & SvHC compliant, Materials Conflict compliant
- Staggered or fanout tail in 900µm or 2.0mm ruggedized
- From 2 to 144 fibers, custom made-to-order

### APPLICATIONS

- Telecommunication networks
- LAN or Campus wide Network
- Internal/External Application
- Conduit/Direct buried with steel tape armored version available
- Supports up to 100G applications
- Indoor & Outdoor Jacket Material

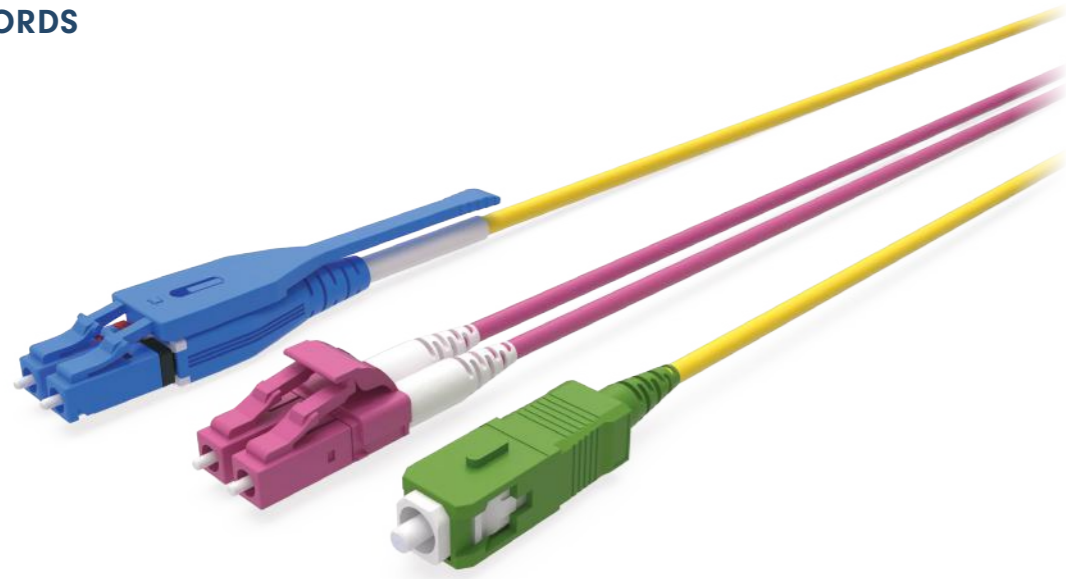
### CONNECTOR SPECIFICATION

Parameters	IL- Max	IL - Typical	RL(PC/APC)
SM – Standard	≤0.30 dB	≤0.20 dB	> 55/65 dB
SM – Premium	≤0.15 dB	≤0.12 dB	> 55/65 dB
MM – Standard	≤0.30 dB	≤0.18 dB	> 28 dB
MM – Premium	≤0.15 dB	≤0.08 dB	> 28 dB

### ORDER INFORMATION

Ask Sales for Order Details: [sales@nexconec.com](mailto:sales@nexconec.com)  
 Or Contact Us by filling website contact form, one of our colleagues will get back to you shortly!

## PATCH CORDS



Get to Know More



### FEATURES

- Conform to IEC, EIA-TIA, and telcordia performance requirements
- All assemblies are machine polished providing highest quality
- Available in custom made length and fiber glass.
- Different type of LC connectors standard duplex, uniboot and uniboot quick release pull-tab.
- All assemblies are factory tested and come with test certificate

### CONNECTOR SPECIFICATION

Parameters	IL- Max	IL - Typical	RL(PC/APC)
SM – Standard	≤ 0.30 dB	≤ 0.20 dB	> 55/65 dB
SM – Premium	≤ 0.15 dB	≤ 0.12 dB	> 55/65 dB
MM – Standard	≤ 0.30 dB	≤ 0.18 dB	> 28 dB
MM – Premium	≤ 0.15 dB	≤ 0.08 dB	> 28 dB

### ORDER INFORMATION

AP 1 2 3 4 5 6 7 8 DIST

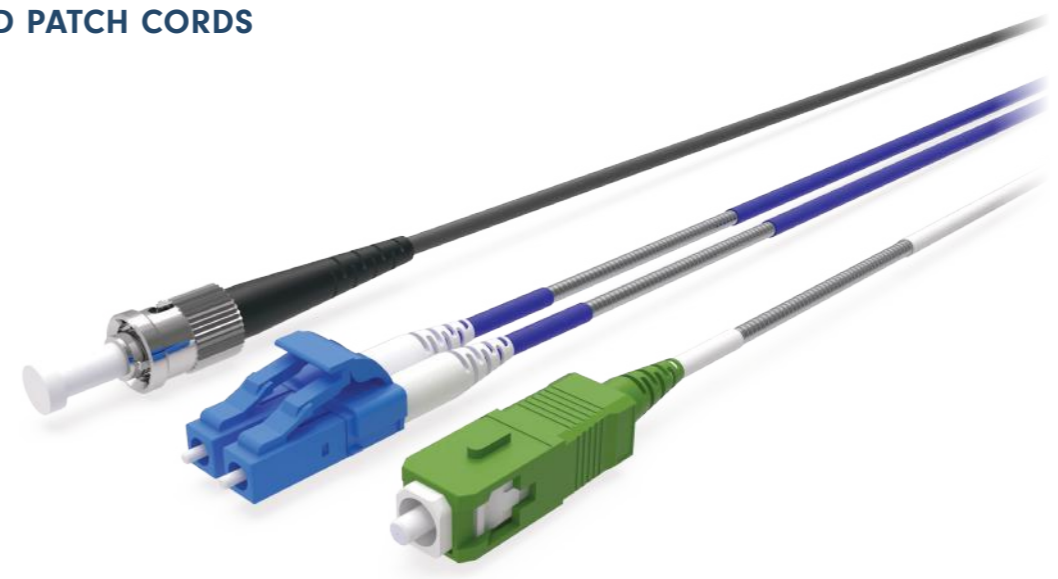
1	2	CONNECTOR	3	CONFIG	4	FIBER	5	JACKET DIAMETER	6	JACKET COLOR	7	JACKET MATERIAL	8	PERFORMANCE
S1	S1	SC	S	SIMPLEX	2D	G652D	2	2MM	Y	YELLOW	L	LSZH	S	STANDARD
S2	S2	SC APC	D	DUPLEX	A1	G657A1	3	3MM	Q	AQUA	C	PVC	P	PREMIUM
L1	L1	LC	R	ROUND DX	A2	G657A2			V	ERIKA VIOLET	R	OFNR		
L2	L2	LC APC			O1	OM1			O	ORANGE	P	OFNP		
L3	L3	LC UNIBOOT			O3	OM3								
L4	L4	LC APC UNIBOOT			O4	OM4								
L5	L5	LC SWITCH												
L6	L6	LC APC SWITCH												
L7	L7	LC HD SWITCH												
F1	F1	FC												
F2	F2	FC APC												
T1	T1	ST												
J1	J1	MTRJF												
E1	E1	E2000												
E2	E2	E2000 APC												
	XX	OPEN END												

Example Part. No:

**APL5L5RA12YLP**

Patch Cord LC-LC Premium Pull Tab Uniboot SM G657A1 2mm Yellow LSZH

## ARMORED PATCH CORDS



Get to Know More



### FEATURES

- Conform to IEC, EIA-TIA, and telcordia performance requirements
- Double armour with high durability and good crush resistance
- All assemblies are machine polished providing highest quality
- Available in standard length cable diameters
- All assemblies are factory tested and come with test certificate
- Attenuation and return loss values specified against reference connectors.

### CONNECTOR SPECIFICATION

Parameters	IL- Max	IL - Typical	RL(PC/APC)
SM – Standard	≤ 0.30 dB	≤ 0.20 dB	> 55/65 dB
SM – Premium	≤ 0.15 dB	≤ 0.12 dB	> 55/65 dB
MM – Standard	≤ 0.30 dB	≤ 0.18 dB	> 28 dB
MM – Premium	≤ 0.15 dB	≤ 0.08 dB	> 28 dB

### ORDER INFORMATION

AR 1 2 3 4 5 6 7 DIST

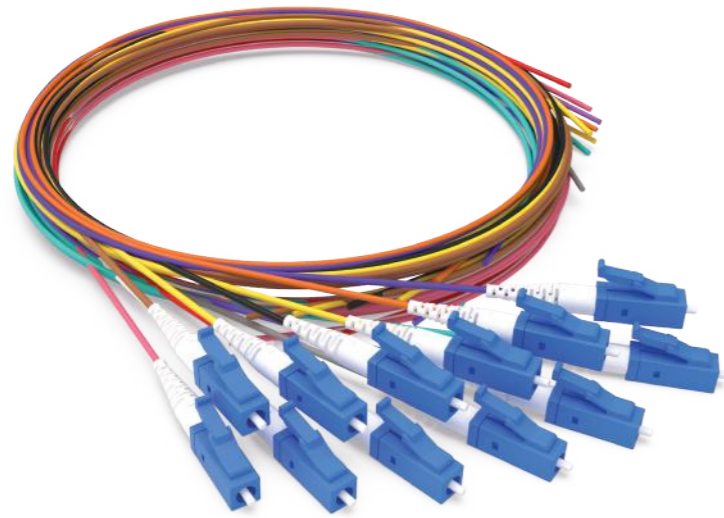
1	2	CONNECTOR	3	CONFIG	4	FIBER	5	JACKET COLOR	6	JACKET MATERIAL	7	PERFORMANCE
S1	S1	SC	S	SIMPLEX	2D	G652D	O	ORANGE	L	LSZH	S	STANDARD
S2	S2	SC APC	R	ROUND DUPLEX	A1	G657A1	G	GREY	R	OFNR	P	PREMIUM
L1	L1	LC			A2	G657A2	B	BLUE	P	OFNP		
L2	L2	LC APC			O3	OM3	W	WHITE				
F1	F1	FC			O4	OM4						
F2	F2	FC APC										
T1	T1	ST										

Example Part. No:

**ARS1S1SO3GL12**

Armoured Patch Cord SC-SC Simplex MM OM3 Grey LSZH 12 Meters 7A1 2mm Yellow LSZH

## PIGTAILS



Get to Know More



### FEATURES

- Conform to IEC, EIA-TIA, and telcordia performance requirements
- Single pack and multi coloured rainbow 6 and 12 pack
- All assemblies are machine polished providing highest quality
- Available in custom length and cable diameters
- All assemblies are factory tested and come with test certificate
- Attenuation and return loss values specified against reference connectors.

### CONNECTOR SPECIFICATION

Parameters	IL- Max	IL - Typical	RL(PC/APC)
SM – Standard	≤0.30 dB	≤0.20 dB	> 55/65 dB
SM – Premium	≤0.15 dB	≤0.12 dB	> 55/65 dB
MM – Standard	≤0.30 dB	≤0.18 dB	> 28 dB
MM – Premium	≤0.15dB	≤0.08 dB	> 28 dB

### ORDER INFORMATION

AX 1 2 3 4 5 6 7 8 DIST

1	CONNECTOR	2	FIBER	3	JACKET DIAMETER	4	BUFFER TYPE	5	JACKET COLOR	6	JACKET MATERIAL	7	PACKAGING	8	PERFORMANCE
S1	SC	2D	G652D	9	900	T	TIGHT	Y	YELLOW	L	LSZH	P	SINGLE	S	STANDARD
S2	SC APC	A1	G657A1	3	2MM	E	EASY	W	WHITE	R	OFNR	S	6 PACK	P	PREMIUM
L1	LC	A2	G657A2	2	3MM	S	SEMI TIGHT	Q	AQUA	P	OFNP	T	12 PACK		
L2	LC APC	O3	OM3					R	RAINBOW						
F1	FC	O4	OM4					V	ERIKA VIOLET						
F2	FC APC														
T1	ST														

Example Part. No:

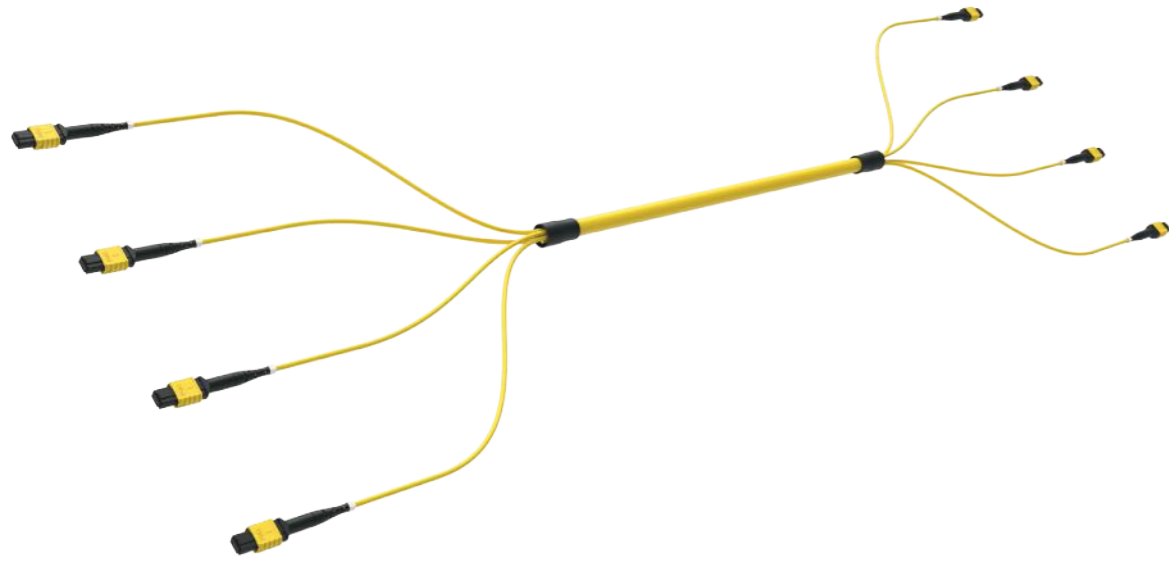
**AXL1O49TRLTS1.5**

Pigtail LC OM4 Tight Buffer Rainbow Color 12 Pack 900um LSZH 1.5 Meter

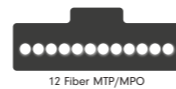
## MTP®/MPO ASSEMBLIES

MTP®/MPO Base-12 Trunks	14
MTP®/MPO to LC/SC Base-12 Fanouts	15
MTP®/MPO QSFP Base-8 40G Trunks	16
MTP®/MPO to LC QSFP Base-8 40G Fanouts	17
MTP®/MPO Base-24 Trunks	18

## MTP®/MPO BASE-12 TRUNKS



Get to Know More



12 Fiber MTP/MPO

### FEATURES

- Conform to IEC, EIA-TIA, and telcordia performance requirements
- All assemblies are machine polished providing highest quality
- Cable terminated with base-12 fiber MTP®/MPO connectors
- Available in custom length and cable construction from 12 to 144 fibers
- All assemblies are factory tested and come with test certificate
- Factory pre-terminated assemblies with protocol for constant and reliable quality

### MTP®/MPO CONNECTOR SPECIFICATION

Parameters	IL- Max	IL - Typical	RL
SM – Standard	≤ 0.75 dB	≤ 0.25 dB	> 60 dB
SM – Premium	≤ 0.35 dB	≤ 0.10 dB	> 60 dB
MM – Standard	≤ 0.60 dB	≤ 0.20 dB	> 20 dB
MM – Premium	≤ 0.35 dB	≤ 0.10 dB	> 20 dB

### ORDER INFORMATION

MO 1 2 3 4 5 6 7 8 9 DIST \*\*

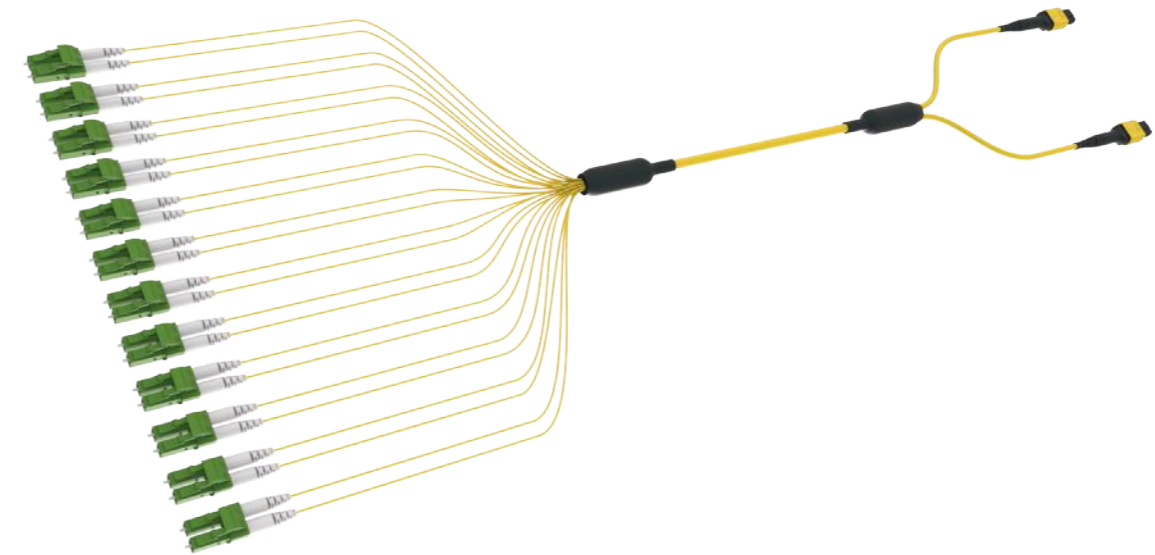
1	2	CONNECTOR	3	4	FIBER	5	CABLE CONSTRUCTION	6	JACKET COLOR	7	JACKET	8	POLARITY
M1	M1	12F MPO(F)STD	2-144	2D	G652D	S	MICRO SINGLE	Y	YELLOW	L	LSZH	A	POL A
M2	M2	12F MPO(M)STD		A1	G657A1	D	MICRO DOUBLE	Q	AQUA	R	OFNR	B	POL B
M3	M3	12F MPO(F)ELITE		A2	G657A2			V	ERIKA VIOLET	P	OFNP	C	POL C
M4	M4	12F MPO(M)ELITE		O3	OM3								
				O4	OM4								

Example part. NO.

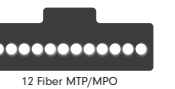
**MOM3M3144A1DYL60**  
Trunk MPO(F)-MPO(F) Elite 144FO SM G657A1  
Microcable Yellow LSZH Polarity A 60Meters



## MTP®/MPO TO LC/SC BASE-12 FANOUTS



Get to Know More



12 Fiber MTP/MPO

NEXCONEC® MTP®/MPO Fanouts are small form factor high-density fiber connector assemblies that breakout into discrete single ferrule connectors. Our MTP®/MPO Fanouts are suitable for up to 100G applications to connect between equipment or to interconnect modules/panels in a data center. The fanouts also can be used for transitions between high to low bandwidth equipment.

The Fanouts are available in Micro cable single and double jacket options suitable and individual connectors are available as simplex/duplex/round duplex cable options. The MTP®/MPO and single ferrule connectors are available in Standard and Elite versions to cater customer's power budget requirements.

### FEATURES

- Small factor breakout module from MTP®/MPO to LC or SC tails 2.0mm SX, DX or Uniboot
- Cable terminated with base-12 fiber MTP®/MPO Connectors
- Available in custom length and cable construction from 12 to 144 fibers
- All Assemblies are factory tested and come with test certificate
- CPR Euro classes certified on demand

### APPLICATIONS

- Telecommunication networks
- Data centers, Co-location DC
- LAN or Campus wide Network

### MTP®/MPO CONNECTOR SPECIFICATION

Parameters	IL- Max	IL - Typical	RL
SM – Standard	≤ 0.75 dB	≤ 0.25 dB	> 60 dB
SM – Premium	≤ 0.35 dB	≤ 0.10 dB	> 60 dB
MM – Standard	≤ 0.60 dB	≤ 0.20 dB	> 20 dB
MM – Premium	≤ 0.35 dB	≤ 0.10 dB	> 20 dB

### CONNECTOR SPECIFICATION

Parameters	IL- Max	IL - Typical	RL(PC/APC)
SM – Standard	≤ 0.30 dB	≤ 0.20 dB	> 55/65 dB
SM – Premium	≤ 0.15 dB	≤ 0.12 dB	> 55/65 dB
MM – Standard	≤ 0.30 dB	≤ 0.18 dB	> 28 dB
MM – Premium	≤ 0.15 dB	≤ 0.08 dB	> 28 dB

### ORDER INFORMATION

Ask Sales for Order Details: sales@nexconec.com

Or Contact Us by filling website contact form, one of our colleagues will get back to you shortly!

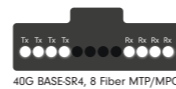




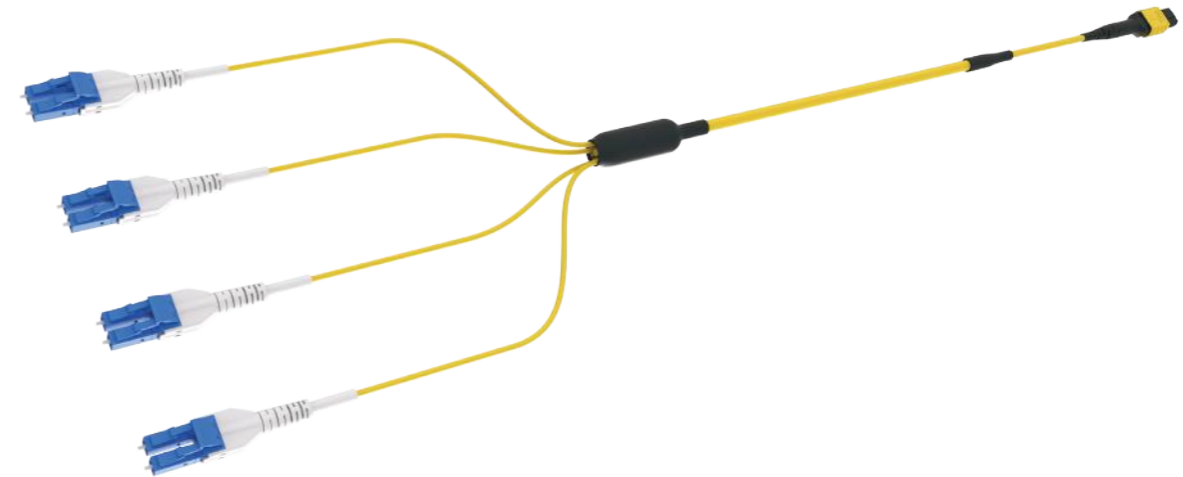
### MTP®/MPO QSFP BASE-8 40G TRUNKS



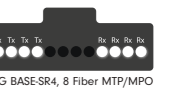
Get to Know More



### MTP®/MPO TO LC QSFP BASE-8 40G FANOUTS



Get to Know More



#### FEATURES

- Conform to IEC, EIA-TIA, and telcordia performance requirements
- All assemblies are machine polished providing highest quality
- Cable terminated with base-8 fiber MTP®/MPO connectors
- All assemblies are tested and come with test certificate
- Factory pre-terminated assemblies with protocol for constant reliable quality

#### MTP®/MPO CONNECTOR SPECIFICATION

Parameters	IL- Max	IL - Typical	RL
SM – Standard	≤ 0.75 dB	≤ 0.25 dB	> 60 dB
SM – Premium	≤ 0.35 dB	≤ 0.10 dB	> 60 dB
MM – Standard	≤ 0.60 dB	≤ 0.20 dB	> 20 dB
MM – Premium	≤ 0.35 dB	≤ 0.10 dB	> 20 dB

#### ORDER INFORMATION

MO\* 1 2 3 4 5 6 7 8 DIST\*\*

1	2	CONNECTOR	3	4	FIBER	5	CABLE CONSTRUCTION	6	JACKET COLOR	7	JACKET MATERIAL	8	POLARITY
G1	G1	8F MPO(F)STD	8	2D	G652D	S	MICRO SINGLE	Y	YELLOW	L	LSZH	B	POLB
G2	G2	8F MPO(M)STD		A1	G657A1	D	MICRO DOUBLE	Q	AQUA	R	OFNR		
G3	G3	8F MPO(F)ELITE		A2	G657A2			V	ERIKA VIOLET	P	OFNP		
G4	G4	8F MPO(M)ELITE		O3	OM3								
				O4	OM4								

Example Part. No:

**MTG1G18A1SYB5**  
 QSFP Trunk MTP(F)-MTP(F) 8FO SM G657A1  
 Microcable Single Yellow LSZH Polarity B 5 Meters



NEXCONEC® MTP®/MPO QSFP Fanouts are small form factor high density fiber connector assemblies that breakout into discrete single ferrule connectors. Our MTP®/MPO Fanouts are specifically designed for QSFP 40G to 10G transition application to connect between equipment or to interconnect modules/panels in a data center.

The fanouts can also be used for transitions between high to low bandwidth equipments. The fanouts are available in Micro cable single or double jacket options and individual connectors are available as simplex/duplex/round duplex cable options. The MTP®/MPO and single ferrule connectors are available in Standard and Elite versions to cater customer's power budget requirements.

#### FEATURES

- MTP®/MPO to connect 40G QSFP transceiver, LC to connect 10G SFP
- Cable terminated with base-8 fiber MTP®/MPO Connectors
- All Assemblies are factory tested and come with test certificate
- Factory pre-terminated assemblies with protocol for constant and reliable quality
- CPR Euro classes certified on demand

#### APPLICATIONS

- Telecommunication networks
- Data centers
- Supports SFP, QSFP, CFP applications
- 40G to 10G transition

#### MTP®/MPO CONNECTOR SPECIFICATION

Parameters	IL- Max	IL - Typical	RL
SM – Standard	≤ 0.75 dB	≤ 0.25 dB	> 60 dB
SM – Premium	≤ 0.35 dB	≤ 0.10 dB	> 60 dB
MM – Standard	≤ 0.60 dB	≤ 0.20 dB	> 20 dB
MM – Premium	≤ 0.35 dB	≤ 0.10 dB	> 20 dB

#### CONNECTOR SPECIFICATION

Parameters	IL- Max	IL - Typical	RL(PC/APC)
SM – Standard	≤ 0.30 dB	≤ 0.20 dB	> 55/65 dB
SM – Premium	≤ 0.15 dB	≤ 0.12 dB	> 55/65 dB
MM – Standard	≤ 0.30 dB	≤ 0.18 dB	> 28 dB
MM – Premium	≤ 0.15 dB	≤ 0.08 dB	> 28 dB

#### ORDER INFORMATION

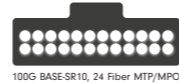
Ask Sales for Order Details: sales@nexconec.com  
 Or Contact Us by filling website contact form, one of our colleagues will get back to you shortly!



## MTP®/MPO BASE-24 TRUNKS



Get to Know More



### FEATURES

- Conform to IEC, EIA-TIA, and telcordia performance requirements
- All assemblies are machine polished providing highest quality
- Cable terminated with base-24 fiber MTP®/MPO connectors
- All assemblies are tested and come with test certificate
- Factory pre-terminated assemblies with protocol for constant reliable quality

### MTP®/MPO CONNECTOR SPECIFICATION

Parameters	IL- Max	IL - Typical	RL
SM – Standard	≤ 0.75 dB	≤ 0.25 dB	> 60 dB
SM – Premium	≤ 0.35 dB	≤ 0.10 dB	> 60 dB
MM – Standard	≤ 0.60 dB	≤ 0.20 dB	> 20 dB
MM – Premium	≤ 0.35 dB	≤ 0.10 dB	> 20 dB

### ORDER INFORMATION

MO\* 1 2 3 4 5 6 7 8 DIST\*\*

1	2	CONNECTOR	3	4	FIBER	5	CABLE CONSTRUCTION	6	JACKET COLOR	7	JACKET MATERIAL	8	POLARITY
K1	K1	24F MPO(F)STD	24-144	2D	G652D	S	MICRO SINGLE	Y	YELLOW	L	LSZH	A	CROSSOVER
K2	K2	24F MPO(M)STD		A1	G657A1	D	MICRO DOUBLE	Q	AQUA	R	OFNR		
K3	K3	24F MPO(F)ELITE		A2	G657A2			V	ERIKA VIOLET	P	OFNP		
K4	K4	24F MPO(M)ELITE		O3	OM3								
				O4	OM4								

Example part. No:

**MTK3K4240SDRA25**  
Trunk MTP24(Female) Elite-MTP24(Male) Elite 24FO MM  
OM3 Microcable Aqua Riser OFNR Polarity A 25 Meters



# FIBER MANAGEMENT

NGX High Density Rack Mount Modular Solutions	20
HD Rack Mount Modular Solutions	24
LGX Rack Mount Modular Solutions	28
MP2 Sliding Splice Patch Panels	32
1U Sliding Patch Panel Interchangeable	34
1U & 2U Sliding Patch Panels	35
MTP/MPO Breakout Patch Panel	36
1U Patching Panel (Up to 144FO)	37
Pivot Patch Panels	38
Wall Mount Modular Box	39
Din Rail Box	41
Fiber Management Accessories	42
Zero RU Bracket	44
Overhead Rack	45
Fiber Testing & Cleaning	46

## NGX HIGH DENSITY MODULAR SOLUTION (1U & Hybrid)



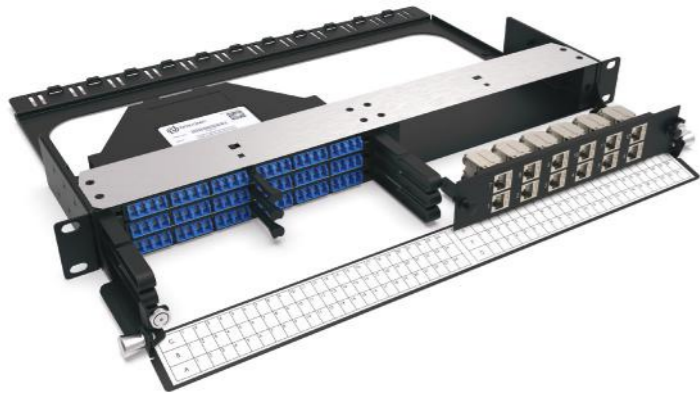
1U 6 Slots NGX Modular Patch Panel  
Unloaded  
**NGXPP01**

Get to Know More



1U 6 Slots NGX Angled Modular Patch Panel  
Unloaded  
**NGXPP02**

Get to Know More



1U NGX Hybrid Fiber & Copper Modular Panel  
Unloaded  
**NGXPP03**

Get to Know More

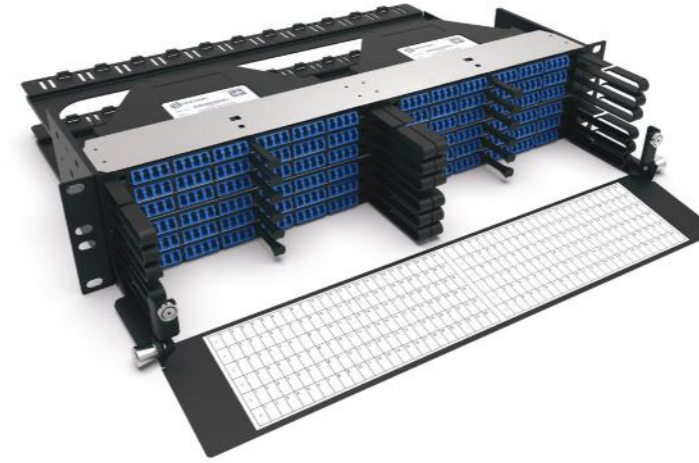


1U NGX Hybrid Fiber & Copper Angled  
Modular Panel - Unloaded  
**NGXPP04**

Get to Know More



## NGX HIGH DENSITY MODULAR SOLUTION (2U)



2U 12 Slots NGX Modular Patch Panel  
Unloaded  
**NGXPP21**

Get to Know More



Nexconec NGX High-density Frame accepts up to 6 NGX Modules for a total of 144FO with LC configuration. Modular panel for multi-application with MPO System, pre-terminated custom modules, patch-Thru, & Next-Gen Transition modules 40G-10G, and finally for conventional splicing. 2 different chassis available flat with front management or Angled version.

### FEATURES AND APPLICATIONS

- 6 Slots NGX per 1U space
- Up to 144FO in LC per 1U
- Open chassis free access module installation with front and rear access
- Modular with MPO Cassette LC/SC, Pre-Terminated custom module, Direct patching, Transition 40-10G and Hybrid Copper KJ
- Datacentre Enterprise network
- Indoor application
- Accepts Indoor and Outdoor cables

### SPECIFICATIONS

General Specifications	
Mounting Type	Rack19"
Height Unit	1U / 2U
Material	Cold rolled steel & Stainless Steel
Housing Color	Black
Application	Indoor IP20

Design - Hardware	
Opening Type	Fixed Tray
Access Type	Front & Rear loading of modules
Front Cable Management	Cable management hooks
Cable Entry Direction	Rear
Rear Cable Management	Removable Cable management bar
Slot Type	NGX Modules
Number of Slots	6 per 1U
Fiber Capacity	144 in LC per 1U

RELATED PRODUCTS AND ACCESSORIES



NGX Module MPO(ELITE)M-LC/UPC Premium 24FO SM  
 NGX Module MPO(ELITE)M-LC/APC Premium 24FO SM  
 NGX Module MPO(ELITE)M-LC Premium 24FO MM 50/125 OM3/4

Polarity  
A/C  
**NGXCA01**  
**NGXCA02**  
**NGXCA03**



NGX Module MPO(ELITE)M-SC/UPC Premium 12FO SM  
 NGX Module MPO(ELITE)M-SC/APC Premium 12FO SM  
 NGX Module MPO(ELITE)M-SC Premium 12FO MM 50/125 OM3/4

**NGXCA04**  
**NGXCA05**  
**NGXCA06**



NGX Transition Module 40G-10G 24FO SM LC - 3xMPO(M) Elite 8FO  
 NGX Transition Module 40G-10G 24FO MM OM3/OM4 LC - 3xMPO(m) Elite 8FO

**NGXCA01Q**  
**NGXCA02Q**



NGX Transition Module 40G-10G 16FO SM Premium LC-2xMPO(M) Elite 8FO  
 NGX Transition Module 40G-10G 16FO MM OM3/OM4 Premium LC-2xMPO(M) Elite 8FO

**NGXCA03Q**  
**NGXCA04Q**



NGX Splice Module for 24FO LC SM Incl. Premium Pigtailes SM LSZH  
 NGX Splice Module for 24FO LC/APC SM Incl. Premium Pigtailes SM LSZH  
 NGX Splice Module for 24FO LC MM Incl. Premium Pigtailes OM4 RBS LSZH

**NGXSP01**  
**NGXSP02**  
**NGXSP03**



NGX Splice Module for 12FO SC SM Incl. Premium Pigtailes SM LSZH  
 NGX Splice Module for 12FO SC/APC SM Incl. Premium Pigtailes SM LSZH  
 NGX Splice Module for 12FO SC MM Incl. Premium Pigtailes OM4 RBS LSZH  
 \*Add '-FT' for France Telecom color coding. (Example: NGXSP01-FT)

**NGXSP04**  
**NGXSP05**  
**NGXSP06**



NGX MPO Splice Module 24FO 2xMPOM) Elite Pigtailes SM TB LSZH  
 NGX MPO Splice Module 24FO 2xMPO(M) Elite Pigtailes MM OM3/OM4 TB LSZH

**NGXSP07**  
**NGXSP08**



NGX Preterm Module for 24FO LC SM Blue Adapters  
 NGX Preterm Module for 24FO LC SM Green Adapters  
 NGX Preterm Module for 24FO LC MM Aqua Adapters

**NGXPM01**  
**NGXPM02**  
**NGXPM03**

NGX Preterm Module for 12FO SC SM Blue Adapters  
 NGX Preterm Module for 12FO SC SM Green Adapters  
 NGX Preterm Module for 12FO SC MM Aqua Adapters  
 Custom cable assembly pre-installed into Preterm Modules

**NGXPM04**  
**NGXPM05**  
**NGXPM06**

\*Ask sales for other products and configuration not shown.

RELATED PRODUCTS AND ACCESSORIES



NGX Patching Module for 24FO LC SM Blue Adapters  
 NGX Patching Module for 24FO LC SM Green Adapters  
 NGX Patching Module for 24FO LC MM Aqua Adapters

**NGXPT01**  
**NGXPT02**  
**NGXPT03**



NGX Patching Module for 12FO SC SM Blue Adapters  
 NGX Patching Module for 12FO SC SM Green Adapters  
 NGX patching Module for 12FO SC MM Aqua Adapters

**NGXPT04**  
**NGXPT05**  
**NGXPT06**



NGX Preterm for 12 ports MPO Adapter Key Up/Key Down  
 NGX Preterm for 12 ports MPO Adapter Key Up/Key Up  
 Patching modules supplied without assembly pre-installed

**NGXPTM01**  
**NGXPTM02**

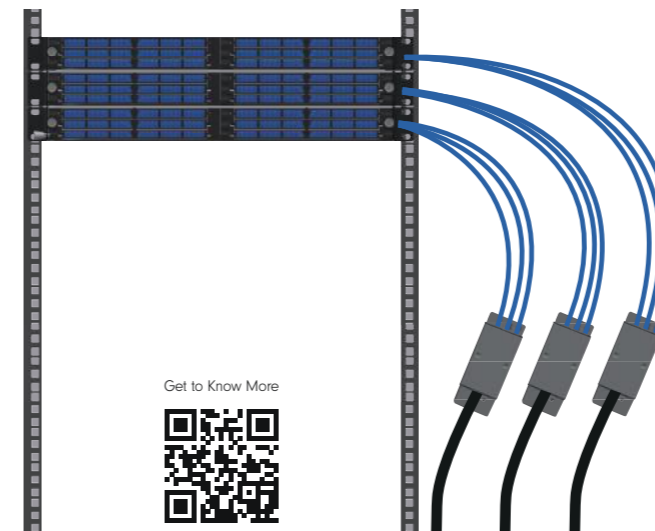


NGX Copper Module 12P Keystone Jack Unloaded

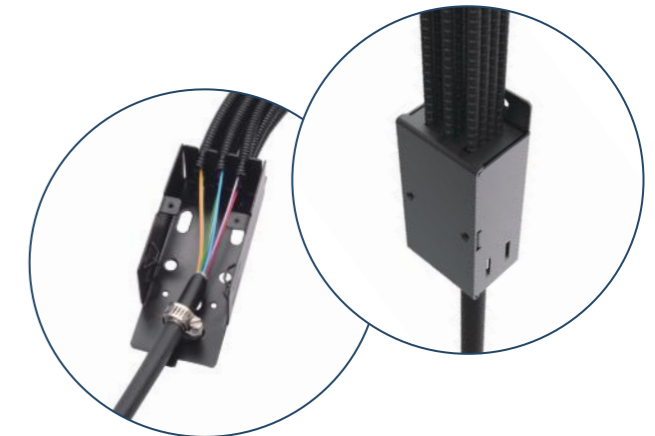
**NGXKJ00**

FIBER CABLE TRANSITION UNIT

Nexconec Transition Breakout Box is designed for enhanced cable management that helps to organize the incoming cable into separate conduits which will connect to the NGX or LGX splice modules. The breakout box supports up to 144F.



Get to Know More



Transition Breakout Unit  
 Corrugated Conduit Ø7.5mm, Roll of 100mtr  
 Corrugated Conduit Ø11.5mm, Roll of 100mtr

**TRBR01**  
**TRTB5**  
**TRTB10**

### 1U 4 SLOTS HD MODULAR SLIDING PATCH PANEL (UP TO 96FO)



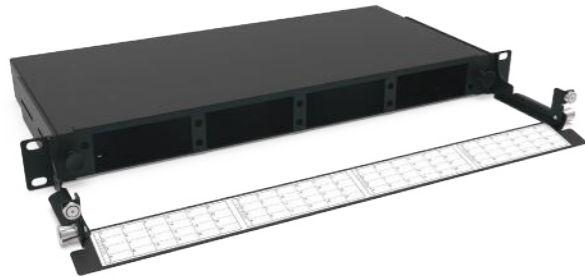
1U 4 Slots HD Modular Fixed Frame  
**MP4PP01**

Get to Know More



1U 4 Slots HD Modular Sliding Patch Panel Unloaded  
(No front Management)  
**MP4PP02**

Get to Know More



1U 4 Slots HD Modular Sliding Patch Panel Unloaded  
(Including Front Management)  
**MP4PP03**

Get to Know More



1U 4 Slots HD Modular Fixed Frame Unloaded  
(Including Front Management)  
**MP4PP04**

Get to Know More



Nexconec high density fixed frame accepts up to 4 HD Modules or HD pass-thru adapter plates for a total of 96FO with LC configuration. Modular panel for multi-application with MPO System, Pre-terminated cables or conventional splicing. Easy front access with optional hinged cable management bar which provides protection of the patch cords as well as labeling. Panel is supplied unloaded and the modules and adapter plates are supplied separately.

#### FEATURES AND APPLICATIONS

- 4 Slots HD in 1U space
- Up to 96FO in LC
- Modular with MPO cassette or adapter plates
- RoHS, REACH and svHC
- Datacentre & enterprise network
- Indoor application
- Accepts indoor and outdoor pre-terminated cables and MTP trunks and splicing

#### SPECIFICATIONS

General Specifications	
Mounting Type	Rack19"
Height Unit	1U
Material	Cold rolled steel
Housing Color	Black
Application	Indoor IP20
Lockable	No

Design - Hardware	
Opening Type	Sliding Tray
Access Type	Front access
Front Cable Management	Removable hinged drop down bar Optional
Cable Entry Direction	Rear
Rear Cable Management	6 cable entries
Slot Type	HD Modules and Plates
Number of Slots	4
Fiber Capacity	96 in LC

### 3U 12 SLOTS HD MODULAR FIXED FRAME (UP TO 288FO)



3U 12 Slots HD Modular Fixed Frame Unloaded  
(Including Front Management)  
**HD3**

Get to Know More



Nexconec HD3 High Density fiber optic 3U fixed frame allows to scale up to 12 HD cassettes for a total of 288FO with LC configuration. Shallow depth of 280mm only to fit MMR 300mm Depth ODF.

Modular panel for multi-application with MPO System, Pre-terminated custom modules, Patch-Thru Plates, Next-Gen Transition modules 100G/40G to 25G/10G, or conventional splicing. Multi-functional chassis which allow easy access during installation or re-work with no disturbance of the existing cables or fibers.

Frame is supplied unloaded and the modules and plates are supplied separately.

#### FEATURES AND APPLICATIONS

- 12 Slots HD in 3U space
- Up to 288FO in LC, 144FO in SC
- Compact size for installation shallow-depth racks
- Fully integrated fiber management with Facilitated patch cord installation
- Individually labelled ports
- Modular with MTP/MPO, Splicing Cassette or Adapter plates or copper module
- Datacenter storage area network & Central Office, POP
- Indoor application
- Enterprise / Campus

#### SPECIFICATIONS

General Specifications	
Mounting Type	Rack19"
Height Unit	3U
Material	Cold rolled steel
Housing Color	Black
Application	Indoor IP20
Lockable	No (optional)

Design - Hardware	
Opening Type	Fixed Chassis
Access Type	Front access
Front Cable Management	Hinged Metal Door with patch cord bottom management
Cable Entry Direction	Rear, left and right
Rear Cable Management	Yes
Slot Type	HD Modules and HD Plates
Number of Slots	12
Fiber Capacity	Up to 288FO in LC, 144FO in SC

RELATED PRODUCTS AND ACCESSORIES



HD Module 2xMPO-Base12 -LC Elite 24FO SM  
 HD Module 2xMPO-Base12 -LC/APC Elite 24FO SM  
 HD Module 2xMPO-Base12 -LC Elite 24FO MM 50/125 OM3/4

Polarity  
A/C

**MP4CA01**  
**MP4CA02**  
**MP4CA03**

Polarity  
Universal B

**MP4CA01U**  
**MP4CA02U**  
**MP4CA03U**



HD Module MPO-SC Elite 12FO SM  
 HD Module MPO-SC/APC Elite 12FO SM  
 HD Module MPO-SC Elite 12FO MM 50/125 OM3/4

**MP4CA04**  
**MP4CA05**  
**MP4CA06**

**MP4CA04U**  
**MP4CA05U**  
**MP4CA06U**



HD Module MPO-LC Elite 12FO SM  
 HD Module MPO-LC/APC Elite 12FO SM  
 HD Module MPO-LC Elite 12FO MM OM3/4

**MP4CA07**  
**MP4CA08**  
**MP4CA09**

**MP4CA07U**  
**MP4CA08U**  
**MP4CA09U**



HD Module 3xMPO-Base-8- LC 24FO SM, Pol B  
 HD Module 3xMPO-Base-8- LC 24FO MM OM3/OM4, Pol B

**MP4CA01Q**  
**MP4CA02Q**



HD Module 1xMPO-Base24- LC 24FO SM  
 HD Module 1xMPO-Base24- LC 24FO MM OM3/OM4

**MP4CA01X**  
**MP4CA02X**



HD Splice Module LC 24FO Pigtailed SM  
 HD Splice Module LC/APC 24FO Pigtailed SM  
 HD Splice Module LC 24FO Pigtailed MM OM3  
 HD Splice Module LC 24FO Pigtailed MM OM4

**MP4SP01**  
**MP4SP02**  
**MP4SP03**  
**MP4SP04**



HD Splice Module SC 12FO Pigtailed SM  
 HD Splice Module SC/APC 12FO Pigtailed SM  
 HD Splice Module SC 12FO Pigtailed MM OM3  
 HD Splice Module SC 12FO Pigtailed MM OM4

**MP4SP05**  
**MP4SP06**  
**MP4SP07**  
**MP4SP08**



HD Splice Module LC 12FO Pigtailed SM  
 HD Splice Module LC/APC 12FO Pigtailed SM  
 HD Splice Module LC 12FO Pigtailed MM OM3  
 HD Splice Module LC 12FO Pigtailed MM OM4

**MP4SP09**  
**MP4SP10**  
**MP4SP11**  
**MP4SP12**

\*Add '-R' for **Ribbon Pigtailed** at the end of Part Number. (Example: MP4SP01-R)  
 \*\*Add '-FT' for **France Telecom** color coding at the end of Part Number. (Example: MP4SP01-FT)

RELATED PRODUCTS AND ACCESSORIES



HD Dual Fiber 8CH Mux CWDM Cassette 1470-1610nm

**MP4MUX8CH**



HD Pass Thru Adapter Plate LC 24FO SM Blue  
 HD Pass Thru Adapter Plate LC 24FO SM Green  
 HD Pass Thru Adapter Plate LC 24FO MM Aqua

**MP4PL01**  
**MP4PL02**  
**MP4PL03**



HD Pass Thru Adapter Plate LC 12FO SM Blue  
 HD Pass Thru Adapter Plate LC 12FO SM Green  
 HD Pass Thru Adapter Plate LC 12FO MM Aqua

**MP4PL04**  
**MP4PL05**  
**MP4PL06**



HD Pass Thru Adapter Plate SC 12FO SM Blue  
 HD Pass Thru Adapter Plate SC 12FO SM Green  
 HD Pass Thru Adapter Plate SC 12FO MM Aqua

**MP4PL07**  
**MP4PL08**  
**MP4PL09**



HD Pass Thru Adapter Plate 6 Ports MPO (Key Up / Key Down)  
 HD Pass Thru Adapter Plate 6 Ports MPO (Key Up / Key Up)

**MP4PL10**  
**MP4PL20**



HD Pass Thru Adapter Plate 12 Ports MPO (Key Up/ Key Down)  
 HD Pass Thru Adapter Plate 12 Ports MPO (Key Up/ Key Up)

**MP4PL11**  
**MP4PL21**



HD Pass Thru Adapter Plate 6 Slots SC DX Unloaded

**MP4PLD**



HD Pass Thru Adapter Plate 6 Slots LC Quad Unloaded

**MP4PLG**



HD Pass Thru Adapter Plate 6 Slots SC SX / LC DX Unloaded

**MP4PLS**



HD Blank Plate

**MP4PL00**



HD Copper Module 6 Ports Keystone Jack Unloaded

**MP4KJ00**

## RACK MOUNT LGX ENCLOSURE



1U Rack Mount Enclosure 3 slots LGX (up to 72FO) Unloaded  
**MP3PP01**

Get to Know More



2U Rack Mount Enclosure 6 slots LGX (up to 144FO) Unloaded  
**MP3PP02**

Get to Know More



4U Rack Mount Enclosure 12 slots LGX (up to 288FO) Unloaded  
**MP3PP03**

Get to Know More



Nexconec Enclosures are available in 3 version 1U, 2U and 4U. They accept LGX pass-thru adapter plates and LGX MPO/MTP Modules. Panels are designed for multi-application with MTP/MPO System, pre-terminated cables or conventional splicing. Easy front access with hinged front and rear removable doors as well as lid. The enclosure provides security with well protected fibers cable entries.

### FEATURES AND APPLICATIONS

- Modular with MTP cassette or LGX adapter plates
- Multiple adaptor options available
- Slide-out tray with spring loaded latch
- Standard 19" indoor application
- Accepts indoor and outdoor pre-terminated cables and conventional splicing
- Custom loading with pigtails and accessories
- Enterprise network

## 1U 3 SLOTS LGX MODULAR SLIDING PATCH PANEL (UP TO 72FO)



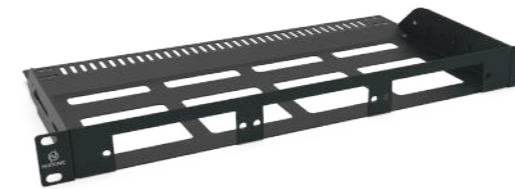
1U 3 Slots LGX Modular Sliding Patch Panel Unloaded  
(No Front Management)  
**MP3PP04**

Get to Know More



1U 3 Slots LGX Modular Sliding Patch Panel Unloaded  
(Including Front Management)  
**MP3PP05**

Get to Know More



1U 3 Slots LGX Modular Fixed Frame  
(No Front Management)  
**MP3PP06**

Get to Know More



1U 3 Slots LGX Modular Fixed Frame  
(Including Front Management)  
**MP3PP07**

Get to Know More



Nexconec Sliding patch panel accepts 3 LGX pass-thru adapter plates for a total of 72FO With LC configuration in 1U. Modular panel for multi-application with MTP/MPO System, Pre-terminated cables or conventional splicing. Easy front access with optional hinged cable management bar which provides protection of the patch cords as well as labeling. Panel is supplied unloaded and the modules and adapter plates are supplied separately.

### FEATURES AND APPLICATIONS

- 3 Slots LGX in 1U space
- Up to 72FO in LC
- Modular with MTP cassette or adapter plates
- RoHS, REACH and svHC
- Enterprise network & datacentre
- Indoor application
- Accepts indoor and outdoor pre-terminated cables and MTP/MPO modules and splicing

### SPECIFICATIONS

General Specifications	
Mounting Type	Rack19"
Height Unit	1U
Material	Cold rolled steel
Housing Color	Black
Application	Indoor IP20
Lockable	No

Design - Hardware	
Opening Type	Sliding Tray
Access Type	Front access
Front Cable Management	Removable hinged drop down bar Optional
Cable Entry Direction	Rear
Rear Cable Management	5 cable entries
Slot Type	LGX Modules and Plates
Number of Slots	3
Fiber Capacity	72 in LC

### 3U 14 SLOTS LGX MODULAR FIXED FRAME (UP TO 336FO)



3U 14 Slots LGX Modular Fixed Frame  
(Up to 336FO) Unloaded  
**LGX3U**

Get to Know More



Nexconec 3U LGX High Density frame allows to scale up to 14 LGX MTP/MPO and Splicing Modules or adapter plates for a total of 336FO in LC ports in a compact chassis. Multi-functional chassis which allow easy access during installation or re-work with no disturbance of the existing cables or fibers.

#### FEATURES AND APPLICATIONS

- 14 Slots LGX in 3U space
- Up to 336FO in LC
- Fully integrated fiber management
- Individually labelled ports
- MTP/MPO, splicing, patching cassette.
- Datacenter storage area network & central office, POP
- Indoor application
- Accepts indoor and outdoor cable

#### SPECIFICATIONS

General Specifications		Design - Hardware	
Mounting Type	Rack19"	Opening Type	Fixed Chassis
Height Unit	3U	Access Type	Hinged Removable Metal Door
Material	Cold rolled steel	Front Cable Management	Removable hinged drop down bar Optional
Housing Color	Black	Cable Entry Direction	Rear
Application	Indoor IP20	Rear Cable Management	Yes
Lockable	No	Slot Type	LGX Modules
		Number of Slots	14
		Fiber Capacity	336 in LC

### LGX MODULES AND ADAPTER PLATES



LGX Module MPO-LC Elite 24FO SM  
 LGX Module MPO-LC/APC Elite 24FO SM  
 LGX Module MPO-LC Elite 24FO MM 50/125 OM3/4

Polarity A/C	Polarity Universal B
<b>MP3CA01</b>	<b>MP3CA01U</b>
<b>MP3CA02</b>	<b>MP3CA02U</b>
<b>MP3CA03</b>	<b>MP3CA03U</b>



LGX Module MPO-SC Elite 12FO SM  
 LGX Module MPO-SC/APC Elite 12FO SM  
 LGX Module MPO-SC Elite 12FO MM 50/125 OM3/4

<b>MP3CA04</b>	<b>MP3CA04U</b>
<b>MP3CA05</b>	<b>MP3CA05U</b>
<b>MP3CA06</b>	<b>MP3CA06U</b>



LGX Splice Module LC 24FO Pigtailed SM  
 LGX Splice Module LC/APC 24FO Pigtailed SM  
 LGX Splice Module LC 24FO Pigtailed MM OM3  
 LGX Splice Module LC 24FO Pigtailed MM OM4

<b>MP3SP01</b>
<b>MP3SP02</b>
<b>MP3SP03</b>
<b>MP3SP04</b>



LGX Splice Module SC 12FO Pigtailed SM  
 LGX Splice Module SC/APC 12FO Pigtailed SM  
 LGX Splice Module SC 12FO Pigtailed MM OM3  
 LGX Splice Module SC 12FO Pigtailed MM OM4

<b>MP3SP05</b>
<b>MP3SP06</b>
<b>MP3SP07</b>
<b>MP3SP08</b>

\*Add '-R' for **Ribbon Pigtailed** at the end of Part Number. (Example: MP3SP01-R)  
 \*\*Add '-FT' for **France Telecom** color coding at the end of Part Number. (Example: MP3SP01-FT)



LGX Pass Thru Adapter Plate LC 24FO SM Blue  
 LGX Pass Thru Adapter Plate LC 24FO SM Green  
 LGX Pass Thru Adapter Plate LC 24FO MM Aqua

<b>MP3PL01</b>
<b>MP3PL02</b>
<b>MP3PL03</b>



LGX Pass Thru Adapter Plate SC 12FO SM Blue  
 LGX Pass Thru Adapter Plate SC 12FO SM Green  
 LGX Pass Thru Adapter Plate SC 12FO MM Aqua

<b>MP3PL04</b>
<b>MP3PL05</b>
<b>MP3PL06</b>



LGX Pass Thru Adapter Plate LC 12FO SM Blue  
 LGX Pass Thru Adapter Plate LC 12FO SM Green  
 LGX Pass Thru Adapter Plate LC 12FO MM Aqua

<b>MP3PL07</b>
<b>MP3PL08</b>
<b>MP3PL09</b>



LGX Pass Thru Adapter Plate SC 6FO SM Blue  
 LGX Pass Thru Adapter Plate SC 6FO SM Green  
 LGX Pass Thru Adapter Plate SC 6FO MM Aqua

<b>MP3PL10</b>
<b>MP3PL11</b>
<b>MP3PL12</b>



LGX Pass Thru Adapter Plate LC 16FO SM Blue  
 LGX Pass Thru Adapter Plate LC 16FO SM Green  
 LGX Pass Thru Adapter Plate LC 16FO MM Aqua

<b>MP3PL21</b>
<b>MP3PL22</b>
<b>MP3PL23</b>



LGX Pass Thru Adapter Plate SC 8FO SM Blue  
 LGX Pass Thru Adapter Plate SC 8FO SM Green  
 LGX Pass Thru Adapter Plate SC 8FO MM Aqua

<b>MP3PL18</b>
<b>MP3PL19</b>
<b>MP3PL20</b>



LGX Pass Thru Adapter Plate Loaded 8 Ports MPO (Key Up/Key Down)  
 LGX Pass Thru Adapter Plate Loaded 8 Ports MPO (Key Up/Key Up)

<b>MP3PL24</b>
<b>MP3PL25</b>



LGX Pass Thru Adapter Plate 6 Slots SC DX/LC Quad Unloaded

<b>MP3PLD</b>
---------------



LGX Pass Thru Adapter Plate 8 Slots SC SX/LC DX Unloaded

<b>MP3PLE</b>
---------------



LGX Pass Thru Adapter Plate 8 Slots FC/ST Unloaded

<b>MP3PLF</b>
---------------



LGX Pass Thru Adapter Plate 3 Slots SC DX/LC QD Unloaded

<b>MP3PLS</b>
---------------



LGX Blank Plate

<b>MP3PL00</b>
----------------



LGX Keystone Jack Module 6 Ports Unloaded

<b>MP3KJ00</b>
----------------



### MP2 1U SLIDING SPLICE PATCH PANELS

\* Add "G" to the end of Part Number for Telecom panels in Grey color.



1U 24 Ports SC Simplex/LC Duplex Sliding Patch Panel (Loaded)  
**MP2PP01**

Get to Know More



1U 24 Ports SC Duplex/LC Quad Sliding Patch Panel (Loaded)  
**MP2PP02**

Get to Know More



1U Sliding Splice Patch Panel Up to 96FO (Unloaded)  
**MP2PP00**

Get to Know More



### MP2 ADAPTER PLATES



- MP2 Adapter Plate 12 LC DX Blue (Loaded) **MP2PL01**
- MP2 Adapter Plate 12 LC DX Green (Loaded) **MP2PL02**
- MP2 Adapter Plate 12 LC DX Aqua (Loaded) **MP2PL03**
- MP2 Adapter Plate 12 LC DX Erika Violet (Loaded) **MP2PL03V**

### MP2 ADAPTER PLATES



- MP2 Adapter Plate 12 SC SX Blue (Loaded) **MP2PL04**
- MP2 Adapter Plate 12 SC SX Green (Loaded) **MP2PL05**
- MP2 Adapter Plate 12 SC SX Aqua (Loaded) **MP2PL06**
- MP2 Adapter Plate 12 SC SX Erika Violet (Loaded) **MP2PL06V**
- MP2 Adapter Plate 12 SC DX Blue (Loaded) **MP2PL07**
- MP2 Adapter Plate 12 SC DX Green (Loaded) **MP2PL08**
- MP2 Adapter Plate 12 SC DX Aqua (Loaded) **MP2PL09**
- MP2 Adapter Plate 12 SC DX Erika Violet (Loaded) **MP2PL09V**
- MP2 Adapter Plate 12 LC QD Blue (Loaded) **MP2PL10**
- MP2 Adapter Plate 12 LC QD Green (Loaded) **MP2PL11**
- MP2 Adapter Plate 12 LC QD Aqua (Loaded) **MP2PL12**
- MP2 Adapter Plate 12 LC QD Erika Violet (Loaded) **MP2PL12V**
- MP2 Adapter Plate 12 FC SX (Loaded) **MP2PL13**
- MP2 Adapter Plate 12 ST SX (Loaded) **MP2PL14**
- MP2 Adapter Plate 12 SC SX/LC DX (Unloaded) **MP2PLS**
- MP2 Adapter Plate 12 SC DX/LC QD (Unloaded) **MP2PLD**
- MP2 Adapter Plate 12 FC/ST SX (Unloaded) **MP2PLF**
- MP2 Blank Plate **MP2PL00**

\* Add "G" to the end of Part Number for Telecom adapter plates in Grey color.

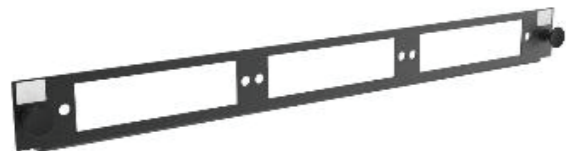
### 1U SLIDING PATCH PANEL INTERCHANGEABLE FRONT ADAPTER PLATE

Get to Know More



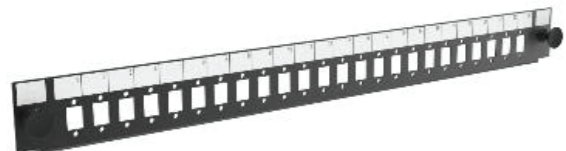
1U Sliding Panel no Front Patching Plate, Unloaded

**SPPXX**



Adapter Plate for SPPXX Sliding Patch panel, 3 LGX Ports Unloaded

**PLMP3**



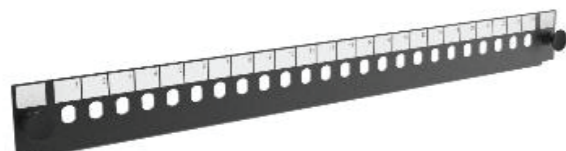
Adapter Plate for SPPXX Sliding Patch panel, 24 Ports SC SX / LC DX Unloaded

**PL24S**



Adapter Plate for SPPXX Sliding Patch panel, 24 Ports SC DX / LC QD Unloaded

**PL24D**



Adapter Plate for SPPXX Sliding Patch panel, 24 Ports FC/ST SX Unloaded

**PL24F**



Adapter Plate for SPPXX Sliding Patch panel, 12 Ports SC DX / LC QD Unloaded

**PL12D**

### 1U & 2U SLIDING PATCH PANELS



1U 12 Ports SC Duplex / LC Quad Sliding Patch Panel Unloaded

**SPP12D**

Get to Know More



1U 24 Ports SC Duplex / LC Quad Sliding patch Panel Unloaded

**SPP24D**

Get to Know More



1U 24 Ports SC Simplex / LC Duplex / E2000 Sliding Patch Panel unloaded

**SPP24S**

Get to Know More



1U 24 Ports FC/ST Simplex Sliding Patch Panel Unloaded

**SPP24F**

Get to Know More



2U 48 Ports SC Simplex / LC Duplex Sliding Patch Panel Unloaded

**SPP48S**

Get to Know More



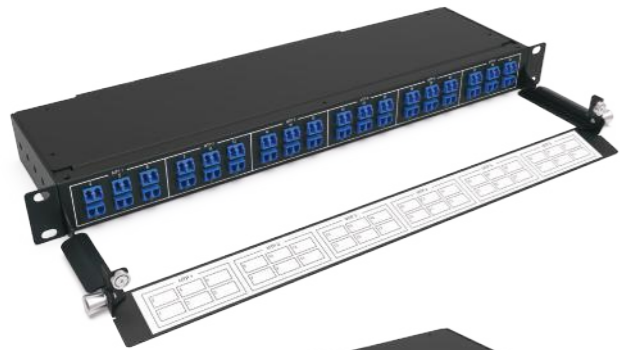
2U 48 Ports SC Duplex / LC Quad Sliding Patch panel Unloaded

**SPP48D**

Get to Know More



### MTP/MPO BREAKOUT PATCH PANEL

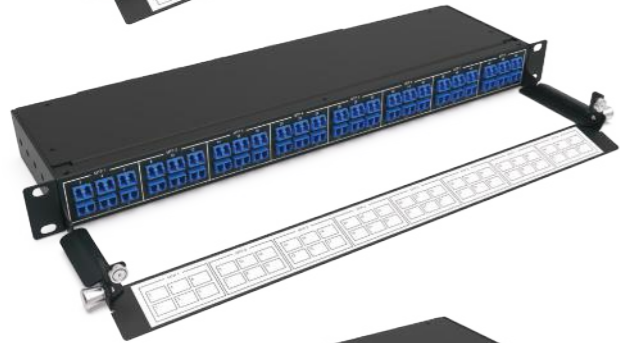


1U HD Panel 6xMPO(M) Elite-LC 72FO SM OS2, Pol A/C  
1U HD Panel 6xMPO(M) Elite-LC 72FO MM OM3/OM4, Pol A/C

Get to Know More

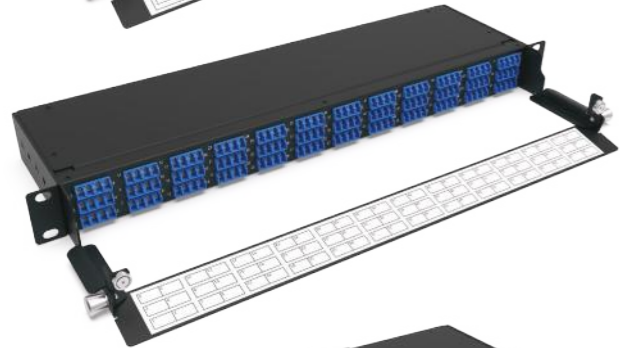


**P72MOLCS**  
**P72MOLCM**



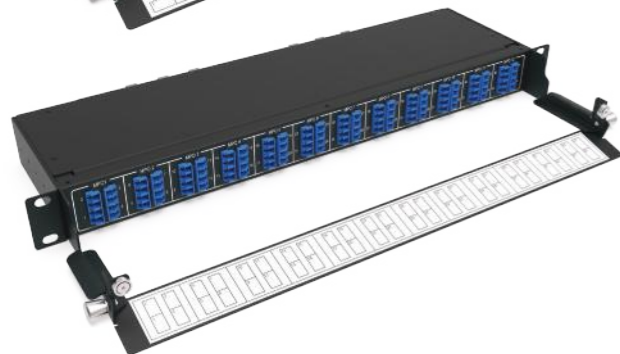
1U HD Panel 8xMPO(M) Elite-LC 96FO SM OS2, Pol A/C  
1U HD Panel 8xMPO(M) Elite-LC 96FO MM OM3/OM4, Pol A/C

**P96MOLCS**  
**P96MOLCM**



1U HD Panel 12xMPO(M) Elite-LC 144FO SM OS2, Pol A/C  
1U HD Panel 12xMPO(M) Elite-LC 144FO MM OM3/OM4, Pol A/C

**P144MOLCS**  
**P144MOLCM**



1U QSFP Breakout Panel 12xMPO(M) Elite-LC 96FO SM OS2, Base-8, Pol A/C

**QPF96A1**

1U QSFP Breakout Panel 12xMPO(M) Elite-LC 96FO MM OM4, Base-8, Pol A/C

**QPF96OM4**



### 1U PATCHING PANEL (UP TO 144FO)



1U Patching Panel 24 Ports SC SX/LC Duplex Unloaded (Up to 48FO LC)

**BPP01**



1U Patching Panel 36 Ports SC SX/LC Duplex Unloaded (Up to 72FO LC)

**BPP02**



1U Patching Panel 48 ports SC SX/LC Duplex Unloaded (Up to 96FO LC)

**BPP03**



1U Patching Panel 36 ports SC DX/LC QD Unloaded (Up to 144FO LC)

**BPP04**

Get to Know More



ROTARY SWING-OUT PATCH PANELS

\* Add "G" to the end of Part Number for Telecom panels in Grey color.



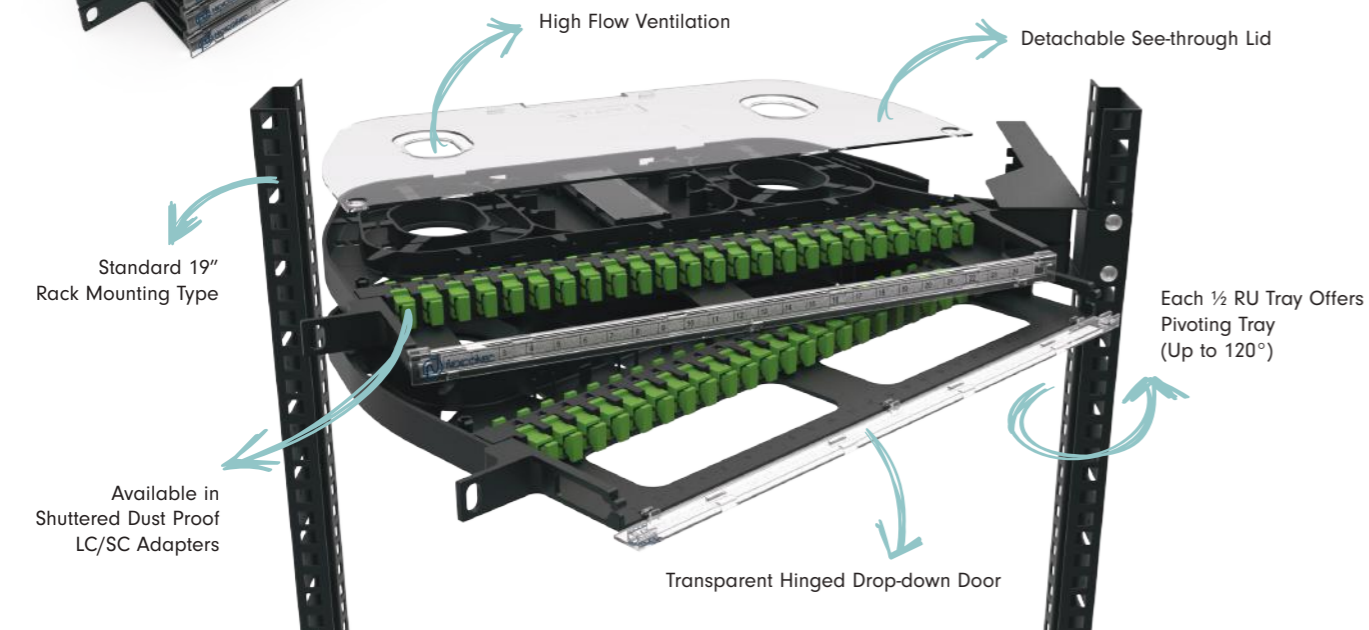
0.5U 24 Ports SC Simplex/LC Duplex Pivot Patch Panel (Loaded)  
**PIV00**



1U 48 Ports SC Simplex/LC Duplex Pivot Patch Panel (Loaded)  
**PIV01**



3U 144 Ports SC Simplex/LC Duplex Pivot Patch Panel (Loaded)  
**PIV03**



WALL MOUNT MODULAR BOX



Wall Mount Modular Box  
1 slot LGX Unloaded  
**FW1MP3**



Wall Mount Modular Box  
2 slot LGX Unloaded  
**FW2MP3**



Wall Mount Modular Box  
4 slot LGX Unloaded  
**FW4MP3**



Nexconec modular wall box are available in 3 versions: 1 Slot, 2 Slots and 4 Slots LGX. They accept LGX MPO Modules or LGX pass-thru adapter plates for a total of 96FO with LC configuration in the 4 slots box. Modular small factor box for multi-application with MPO System, Pre-terminated cables or conventional splicing. Box is supplied unloaded and the modules and plates are supplied separately, as well as splicing accessories.

FEATURES AND APPLICATIONS

- Up to 4 Slot LGX
- Up to 96FO in LC
- Modular with MPO cassette or adapter plates
- Accepts indoor and outdoor pre-terminated cables and MTP system or splicing
- RoHS, REACH and svHC
- FTTX deployment & enterprise network
- Indoor application

## WALL MOUNT MODULAR BOX



Wall Mount Double Door 48 Ports  
SC - Unloaded  
**FW05**

Get to Know More



Wall Mount Double Door 48 Ports  
FC/ST - Unloaded  
**FW06**

Get to Know More



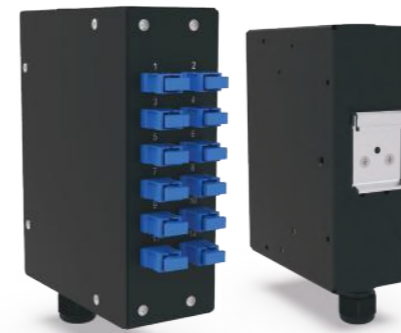
NEXCONEC Lockable Double Door distribution box is supplied unloaded as standard and offers the ability to terminate up to 48 fibers housed in a strong metal enclosure for indoor application.

An internal splicing section offers a neat and tidy solution for housing up to the adapters and splicing area. A locking for the both sections: Splicing and Patching adds extra security when positioned in un-secure areas.

### FEATURES AND APPLICATIONS

- SC Simplex or LC Duplex Adapter type
- FC or ST Simplex Adapter type
- Double Door each lockable
- Removable splice tray for easy installation
- Accepts loose tube, distribution and pre-terminated cables
- LAN /FTTX Networks
- Data communication Networks
- Indoor Application

## DIN RAIL BOX



Din Rail Splicing Box 12 Ports SC/FC/ST & 12 or 24 Ports LC  
**FD01SP**

Get to Know More



LGX DIN Rail Compact Splice Box  
**FD03**

Get to Know More



Din Wall Box 6 Ports Copper Jacks Unloaded  
**FD01CO**

Get to Know More



Nexconec compact & low-profile modular DIN RAIL MODULAR BOX is designed for use in a wide range of industrial applications. Accepts up to 24 fibers in LC configuration or 6 copper keystones jacks. Modular small factor box for multi-application with MPO System, Pre-terminated cables or conventional splicing.

### FEATURES AND APPLICATIONS

- Accommodates up to 12 or 24FO in LC or SC
- Fusion splicing, pre-terminated loose tube and tight buffered cables.
- MPO/MTP pre-terminated cabling solution.
- Top and bottom cable entries
- 6 Copper jacks
- FTTX deployment & enterprise network
- Industrial, power system and control
- Rail signalling and control networks

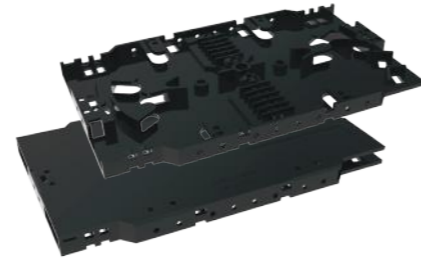
FIBER MANAGEMENT ACCESSORIES



NXE Splice tray 24FO Stackable **FSP01**



NXE Fiber Management Spool **FSP02**



Splice Tray 12FO Stackable **FSP03**  
Splice Tray 24FO Mechanical Crimp splice **FSP03ANT**



Fiber Transition Breakout Unit **TRBR01**



1U Reducer Brackets **1UBRK21**  
ETSI 21" to 19" Black Metal



Fiber Splice kit (Splice bridge 24FO,  
8 Bunny Clips, 1 Cable gland PG13.5)



Fiber Keystone Jack Coupler White **FJAK1**  
Fiber Keystone Jack Coupler Black **FJAK2**



Fan-Outs Kit Indoor 6F 1m legs colored **FANK6**  
Fan-Outs Kit Indoor 8F 1m legs colored **FANK8**  
Fan-Outs Kit Indoor 12F 1m legs colored **FANK12**



Splice Protector 40mm **FSPL40**  
Splice Protector 60mm **FSPL60**  
Ribbon Splice Protector 40mm **FSPR01**  
Crimp Style Splice Protector **FSPANT**



Velcro Cable Tie Roll 12mm x 25M **ROLL25**



Heavy Duty Multi-Pocket Tool Pouch  
with Adjustable Nylon Belt **TPB01**



M6 Cage Nuts & Screws for  
Server Rack and Cabinet 6mm **M6CNS01**

FIBER MANAGEMENT ACCESSORIES



1U 19" Blanking Plate Plastic, Snap in **FCM00**



1U Cable Manager 5 hooks Plastic,  
Depth 80mm **FCM02**



1U Cable Manager with Brush strip  
5 hooks Plastic, Depth 70mm **FCM03**



2U Cable Manager Rail 12 Slots  
with cover Plastic, Depth 75mm **FCM04**



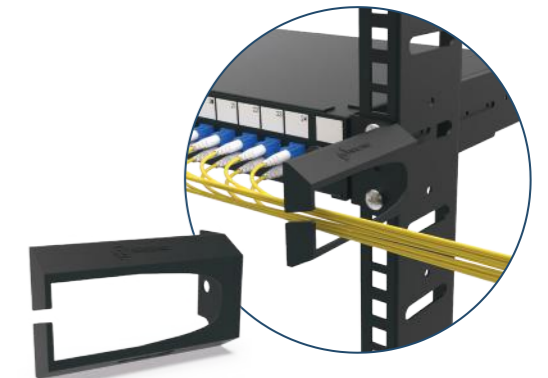
2U Cable Manager Rail 12 Slots  
with cover Plastic, Depth 75mm **FCM05**



1U 19" Cable Manager with Brush Strip **FCM06**



2U 19" Cable Manager with Brush Strip **FCM07**



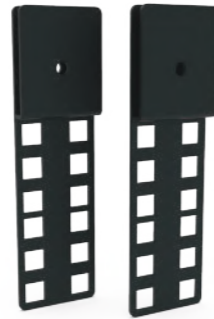
1U Side Manager Guide **1UGD01**

FIBER MANAGEMENT ACCESSORIES



Retrofit Plate CCH to LGX

MP3PLCCH

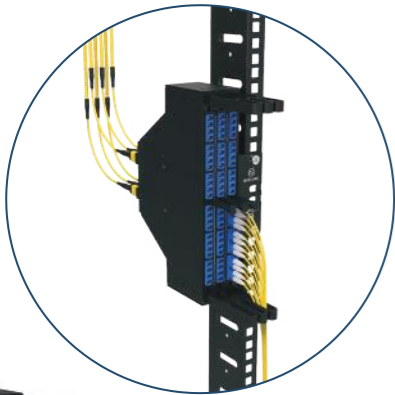


2U Mini Overhead Brackets



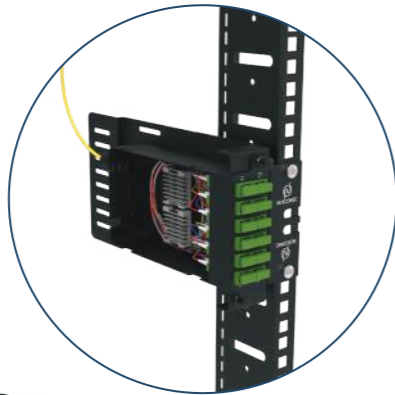
2UBRK01

ZERO RU BRACKET



NGX Zero RU Bracket, 3 Slots (Unloaded)

NGXBK01



HD Zero RU Bracket, 1 Slot (Unloaded)

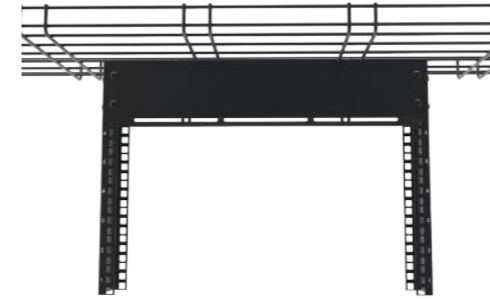
MP4BK01



LGX Zero RU Bracket, 1 Slot (Unloaded)

MP3BK01

OVERHEAD RACK



Part Number	Description
OV4U	Mini overhead rack 4U
OV6U	Mini overhead rack 6U
OV8U	Mini overhead rack 8U

WALL MOUNTED CABINET



Part Number	Size	Depth(mm)	Width(mm)
WC64560	6U	450	600
WC94560	9U	450	600
WC96060	9U	600	600
WC124560	12U	450	600
WC126060	12U	600	600
WC154560	15U	450	600
WC156060	15U	600	600
WC184560	18U	450	600
WC186060	18U	600	600

FLOOR STANDING CABINET



Part Number	Size	Depth(mm)	Width(mm)
FC426060	42U	600	600
FC428060	42U	800	600
FC421060	42U	1000	600
FC426080	42U	600	800
FC428080	42U	800	800
FC421080	42U	1000	800
FC476060	47U	600	600
FC478060	47U	800	600
FC471060	47U	1000	600
FC476080	47U	600	800
FC478080	47U	800	800
FC471080	47U	1000	800

## FIBER TESTING & CLEANING

### VFL



Mini visual fault locator 5KM

TSVFL5M

### CASSETTE CLEANER



Cassette cleaner for 2.5mm & 1.25mm ferrules, cleans connectors SC/FC/ST/MU/LC/MT UPC & APC

TCOS01



Cassette cleaner for MT ferrules, cleans connectors MTP/MPO flat and angled with guide pins and no pins.

TCOS02

### ONE-CLICK CLEANER



One-click cleaner for 2.5mm ferrule, cleans adaptor mounted connectors SC/FC/ST UPC & APC

TCOC01



One-click cleaner for 1.25mm ferrule, cleans adaptor mounted connectors LC/MU UPC & APC

TCOC02

### ONE-CLICK MPO CLEANER



One-click cleaner for MTP/MPO ferrule. Cleans connector plugs and adaptor mounted connectors. Flat and angled with guide pins and no pins.

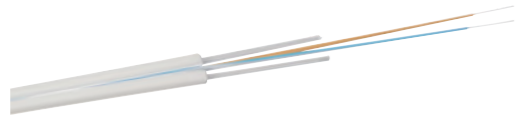
TCOC03

# FIBER CABLES, FTTH & TELECOM

<a href="#">Indoor Cables</a>	48
<a href="#">Outdoor Cables</a>	49
<a href="#">Outdoor Enclosures</a>	50
<a href="#">FTTH Distribution Boxes</a>	51
<a href="#">FTTH Wall Outlets</a>	53
<a href="#">FIC Field Installable Connectors</a>	53
<a href="#">Pre-assembled Connectors</a>	54
<a href="#">Passive Components</a>	55
<a href="#">Outdoor ODVA</a>	56
<a href="#">Deployable Tactical Fiber Optic Outdoor Cable Assemblies</a>	57



## INDOOR CABLES



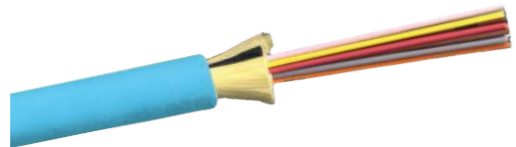
### FTTH FLAT DROP CABLE (1-4FO)

- Choice of bend insensitive fiber type
- Internal FTTH applications horizontal and riser
- Available in white LSZH jacket for internal use



### SIMPLEX & DUPLEX PATCH CABLE (1-2FO)

- Internal interconnection
- Ideal for assembling patch cords
- Choice of cable diameter



### Tight Buffered Distribution Cable (2-48FO)

- Internal cable for installation in trunking
- Fiber backbones in riser and horizontal configurations
- High strength e-glass rodent resistant yarn strength members
- Optional special outdoor rated



### Breakout Cable (2-24FO)

- Internal breakout cable 2.0mm Sub-unit.
- Easy to use and deploy
- Individual high strength aramid yarn strength members for ease of handling



### Microcable (Up to 288FO)

- Small diameter for internal use
- All dielectric construction
- Bend insensitive fiber
- Ideal for internal interconnectivity using MTP/MPO
- Compact 250µm high fiber density construction
- High fiber count cable up to 288FO for high density connectivity

\* Other cable constructions available on request.

\*\*Please visit the website to download the complete datasheets or ask sales for details and ordering information.

## OUTDOOR CABLES



### Single Loose Tube Cable (2-24FO)

- Suitable for internal / external duct applications
- Suitable for environments where rodent resistance is required
- Ideal for intra building links in campus environments
- E-glass strength members for rodent resistance



### Multi Loose Tube Cable (24-144FO)

- PE jacket: suitable for external duct applications
- LSZH suitable for Internal/external applications
- Compact 250µm loose tube construction
- E-glass strength members for rodent resistance



### Armoured Single Loose Tube Cable (2-24FO)

- Suitable for internal/external duct and direct burial applications
- Ideal for intra building links in campus environments
- CST armoring for enhanced impact and crush resistance
- Compact 250µm loose tube construction



### Armoured Multi Loose Tube Cable (24-144FO)

- Suitable for internal/external duct and direct burial applications
- CST armoring for enhanced impact and crush resistance
- Compact 250µm loose tube construction
- High crush and water resistant



### Aerial Figure 8 Cable (12-144FO)

- Figure of eight cables are suitable for installation in aerial environments for long haul communication
- Stranded wires as self supporting members provide excellent strain performance and convenient installation
- Suitable for aerial cable applications

\* Other cable constructions available on request.

\*\*Please visit the website to download the complete datasheets or ask sales for details and ordering information.

## OUTDOOR ENCLOSURES

### DOMe ENCLOSURE HEAT SHRINK SEALING



FO Dome Enclosure 24FO H/S	<b>OC-DO01-24</b>
FO Dome Enclosure 48FO H/S	<b>OC-DO01-48</b>
FO Dome Enclosure 72FO H/S	<b>OC-DO01-72</b>
FO Dome Enclosure 96FO H/S	<b>OC-DO01-96</b>
FO Dome Enclosure 144FO H/S	<b>OC-DO01-144</b>

Get to Know More



### DOMe ENCLOSURE MECHANICAL SEALING



FO Dome Enclosure 24FO MEC	<b>OC-DO02-24</b>
FO Dome Enclosure 48FO MEC	<b>OC-DO02-48</b>
FO Dome Enclosure 72FO MEC	<b>OC-DO02-72</b>
FO Dome Enclosure 96FO MEC	<b>OC-DO02-96</b>
FO Dome Enclosure 144FO MEC	<b>OC-DO02-144</b>

Get to Know More



### INLINE ENCLOSURE



FO Inline Enclosure 24FO	<b>OC-IN01-24</b>
FO Inline Enclosure 48FO	<b>OC-IN01-48</b>
FO Inline Enclosure 72FO	<b>OC-IN01-72</b>
FO Inline Enclosure 96FO	<b>OC-IN01-96</b>
FO Inline Enclosure 144FO	<b>OC-IN01-144</b>

Get to Know More



### DISTRIBUTION ENCLOSURES



Fiber Optic Distribution Enclosure up to 96 Splices Incl. 16 Ports SC SX	<b>OC-DO03A</b>
Fiber Optic Distribution Enclosure up to 96 Splices Incl. 24 Ports SC SX	<b>OC-DO03B</b>
Fiber Optic Distribution Enclosure up to 144 Splices	<b>OC-DO03C</b>

## FTTH DISTRIBUTION BOXES

Nexconec wall box solutions are ideal for demarcation wiring and rack-room cable management & incorporate the latest in cutting-edge technology, helping to deliver unmatched savings in installation time, labor costs and performance in all fiber networks.



Lockable Indoor/Outdoor Wall Box 6 Ports  
SC Duplex (Unloaded)  
**WP06U1**

Get to Know More



Indoor/Outdoor Wall Box 8 Ports  
SC Simplex (Unloaded)  
**WP08U1**

Get to Know More



Lockable Indoor/Outdoor Wall Box 8 Ports  
SC Simplex (Unloaded)  
**WP09U1**

Get to Know More



\*Please contact sales for details and products information. More specific models are available.

## FTTH DISTRIBUTION BOXES

Nexconec lockable fiber distribution boxes offers the ability to terminate tight buffer, loose tube and pre-terminated cables in a robust ABS enclosure for indoor and outdoor applications.

With the ability to use both SC & LC adaptor types offering a flexible solution to the end user, enabling them to incorporate a multifunctional enclosure which allows easy access during installation or re-work with no disturbance of the existing cable or fibers.



Lockable Indoor/Outdoor Wall Box 12 Ports SC Simplex (Unloaded)  
**WP12U1**

Get to Know More



Lockable Indoor/Outdoor Wall Box 24 Ports SC Simplex (Unloaded)  
**WP24U1**

Get to Know More



Lockable Indoor/Outdoor Wall Box 48 Ports SC Simplex (Unloaded)  
**WP48U1**

Get to Know More



Lockable (Double Door) Indoor Wall Box 48 Ports SC Simplex (Unloaded)  
**WP48D**

Get to Know More



## FTTH WALL OUTLETS

The internal wall outlet box is designed to use inside the home. The operator has the choice to have this compact box equipped with adaptors and pigtails or unloaded. The box is designed with integrated shutters to comply with safety standards.



Pre-Terminated Fiber Wall Outlet **FWO**



Wall Outlet 1 Port SC Simplex/LC Duplex, (Unloaded) **WO01**  
Wall Outlet 1 Port SC Duplex/LC Quad, (Unloaded) **WO02**



FTTH Wall Outlet 4 Ports SC Simplex (Unloaded) **WO03**



Compact Wall Outlet Up to 4 Ports SC Simplex (Unloaded) **WO04**



Subscriber Wall Outlet 2 Ports SC Simplex (Unloaded) **WO05**



FTTH Fiber Face Plate 1 Port SC Simplex, Angled **WO06**  
FTTH Fiber Face Plate 2 Ports SC Simplex, Angled **WO07**

## FIC FIELD INSTALLABLE CONNECTORS

Field-installable connectors (FIC) are factory terminated and polished to make fiber terminations fast, easy and reliable. These fiber optic connectors offer terminations in less than 2 minutes without any difficulty and require no epoxy, polishing or crimping.

Connectors available in singlemode and multimode fiber, different cable construction simplex 2/3mm, 900µm and drop cable.

Get to Know More



FIC SC/UPC OS2 SM 2/3mm  
FIC SC/APC OS2 SM 2/3mm  
FIC SC/UPC OS2 SM 900µm  
FIC SC/APC OS2 SM 900µm  
FIC SC/UPC OS2 SM DROP  
FIC SC/APC OS2 SM DROP

**ACFICS01**  
**ACFICS02**  
**ACFICS03**  
**ACFICS04**  
**ACFICS05**  
**ACFICS06**

FIC LC/UPC OS2 SM 2/3mm  
FIC LC/APC OS2 SM 2/3mm  
FIC LC/UPC OS2 SM 900µm  
FIC LC/APC OS2 SM 900µm  
FIC LC/UPC OS2 SM DROP  
FIC LC/APC OS2 SM DROP

**ACFICL01**  
**ACFICL02**  
**ACFICL03**  
**ACFICL04**  
**ACFICL05**  
**ACFICL06**

### PRE-ASSEMBLED CONNECTORS



- Available as FC, SC, ST, LC
- Complies with IEC 61754-4, IEC 60784-14 and TIA 604-3
- RoHS, REACH SvHC compliant
- Low insertion loss and high back reflection
- Zirconia ceramic ferrule with high end ultra physical contact

#### ORDER INFORMATION

AC 1 2 3 4 5

1	CONNECTOR	2	FIBER TYPE	3	FIBER PORT	4	BOOT DIAMETER	5	PERFORMANCE
S1	SC	S	SINGLEMODE	S	SIMPLEX	9	900µm	S	STANDARD
S2	SCA	M	MULTIMODE	D	DUPLEX	2	2MM	P	PREMIUM
L1	LC					3	3MM		
L2	LCA								
F1	FC								
F2	FCA								
T1	ST								

### ADAPTERS



- Low insertion loss and improved reconnectability 0.1dB maximum
- Available in flanged and flangeless options.
- Supplied with zirconia ceramic sleeve.
- Complies with IEC 61754-4 standard

#### ORDER INFORMATION

AA 1 2 3 4 5

1	CONNECTOR	2	FIBER TYPE	3	FIBER PORT	4	FLANGE (ONLY SC/LC)	5	HOUSING COLOR (ONLY SC/LC)
S1	SC	S	SINGLEMODE	S	SIMPLEX	F	FLANGE	L	BLUE
S2	SCA	M	MULTIMODE	D	DUPLEX	N	NO FLANGE	N	GREEN
L1	LC			Q	QUAD			E	BEIGE
L2	LCA							Q	AQUA
F1	FC							V	ERICA VIOLET
F2	FCA								
T1	ST								

### FIXED ATTENUATORS



- Low insertion loss and improved reconnectability 0.1dB maximum.
- Blue, Green, Aqua and Erika Violet adaptors for SC & LC.
- Material compliant to RoHS2 and REACH SvHC.
- Available in FC, SC, ST, LC, PC&APC

#### ORDER INFORMATION

AT 1 2 3 4 5

1	CONNECTOR TYPE	2	FIBER MODE	3	CONNECTION	4	ATTENUATION	5	HOUSING COLOR (ONLY SC/LC)
S1	SC SIMPLEX	S	SINGLEMODE	F	FEMALE TO MALE	1	1dB	L	BLUE
L1	LC SIMPLEX	M	MULTIMODE			2	2dB	N	GREEN
F1	FC SIMPLEX ROUND					3	3dB	E	BEIGE
						...	...	Q	AQUA
						30	30dB	V	ERICA VIOLET

### PASSIVE COMPONENTS

Nexconec provides a large product portfolio of customized PLC Splitters 1xN and 2xN in different formats such as modules pre-terminated with connectors tails, Plug and Play modules or directly into rack mount panels.



#### RACK MOUNT SPLITTERS

PLC splitters mounted in patch panel, high density up to 144 ports LC on the front with multiple splitting ratios (1:4, 1:8, 1:16, 1:32). Rear and Front access or totally front access for shallow depth street cabinets.

Get to Know More



#### SPLITTER MODULES

Modules NGX, HD, or LGX equipped with PLC splitters. Up to 24 ports LC on the front.

Get to Know More



#### HD DUAL FIBER 8CH MUX CWDM CASSETTE

HD Dual Fiber 8CH Mux CWDM Cassette 1470-1610nm MP4MUX8CH

Get to Know More



#### WAVELENGTH DIVISION MULTIPLEXER WDM

- Available in steel pipe, ABS box or assembled in custom module
- 1310-1550nm fused wavelength division multiplexer
- Low insertion loss



#### CWDM

- Available in 2/4/8 and 16 channels
- Wide pass band
- High isolation and low insertion loss
- High stability and reliability

\*Please contact Sales for details and products information.

## OUTDOOR ODVA

Nexconec IP68 ODVA assemblies provide an environmental seal and mechanical protection for outdoor application. ODVA connectors are available in SC Simplex, LC Duplex or MTP/MPO. They provide quick installation solutions and have good performance on mating with ODVA receptacles.



Get to Know More



ODVA Receptacle Thru MPO Adapter Opposed keys  
ODVA Receptacle SC Simplex Thru Adapter  
ODVA Receptacle LC Duplex Thru Adapter

**ODVA-MT**  
**ODVA-SC**  
**ODVA-LC**



ODVA Box 12FO MPO(Male) Elite base12 to 6 ports  
LC Duplex Singlemode OS2

**ODVA-B01**



ODVA Waterproof Box 12FO MPO(Male) Elite to 6 ports LC Duplex Single mode OS2, IP65  
ODVA Waterproof Box 12FO MPO(Male) Elite to 6 ports LC/APC Duplex Single mode OS2, IP65  
ODVA Waterproof Box 12FO MPO(Male) Elite to 6 ports LC Duplex Multimode OM3, IP65  
ODVA Waterproof Box 12FO MPO(Male) Elite to 6 ports LC Duplex Multimode OM4, IP65  
ODVA Waterproof Box 6FO MPO(Male) Elite to 6 ports SC Simplex Single mode OS2, IP65  
ODVA Waterproof Box 6FO MPO(Male) Elite to 6 ports SC/APC Simplex Single mode OS2, IP65  
ODVA Waterproof Box 6FO MPO(Male) Elite to 6 ports SC Simplex Multimode OM3, IP65  
ODVA Waterproof Box 6FO MPO(Male) Elite to 6 ports SC Simplex Multimode OM4, IP65

**ODVA-B04SML1**  
**ODVA-B04SML2**  
**ODVA-B04M3L1**  
**ODVA-B04M4L1**  
**ODVA-B04SMS1**  
**ODVA-B04SMS2**  
**ODVA-B04M3S1**  
**ODVA-B04M4S1**

## DEPLOYABLE TACTICAL FIBER OPTIC OUTDOOR CABLE ASSEMBLIES

Nexconec Tactical field deployable cable reels offer a convenient method for roll-out and retrieval of fiber optic cable assemblies as well as a range of communications cabling.

Ruggedized Outdoor Armored Flex Cable. Single loose tube up to 12 250micron fibers with aramid strength member. Then in the helical tube and surrounded with metal braiding and PU jacket for high crush resistance for harsh outdoor application.

It is ideal for using in communication, broadcast and pro audio applications. Additionally, extendable pull rod and pulley allows operators to easily rotate reel in deployment or take-up situations and easy transportation and deployment.



Get to Know More



### FEATURES AND APPLICATIONS

- Custom ruggedized fiber cable assembly up to 300m
- Any connector available SC, LC, MPO, ODVA
- Outdoor rated Flex armored PU jacketed cable
- Offers excellent handling and protection of cable and assemblies
- All metal structure and adjustable pull rod & pulley
- Integrated folding handle offers convenient winding and storage
- Easy transportation and deployment
- Industrial networks
- Broadcast and television networks
- LAN or Campus Network
- Mine site and harsh environment cabling
- Deployable connectivity

### ORDER INFORMATION

MX 1 2 3 4 5 6 DIST

	1	2	CONNECTOR	3	CABLE TYPE	4	FIBER COUNT	5	FIBER TYPE	6	LENGTH
REEL	S1	S1	SC	AM	Flex Armored PU		1-24	A1	Single mode OS2		Up to 300M
	S2	S2	SCA					O4	Multimode OM4		
	L1	L1	LC								
	L2	L2	LCA								
	F1	F1	FC								
	M3	M3	MPO(Female) Base-12								
	OVS1	OVS1	ODVA-SC SX								
	OVS2	OVS2	ODVA-LC DX								
	OVM3	OVM3	ODVA-MPO(Female) Base-12								

# COPPER STRUCTURED CABLING

Copper Pre-terminated Cabling	59
Category 6A UTP	60
Category 6A FTP Shielded	61
Category 6 UTP	62
Category 6 FTP Shielded	63
Category 5E UTP	64
Panels and Accessories	65
Power Cords C13-C14	66

## COPPER PRETERMINATED CABLING



Get to Know More



Nexconec copper pre-terminated trunk assemblies are the perfect solution for enterprise/ premise & data centre applications where speed of installation is important. Factory termination and testing simplify installation, saving time and labor as compared to field terminated installations.

Custom-made configurations in pre-engineered lengths with connectors to meet the specific needs of each application. Assemblies are typically built with a choice of 6, 8, 12 or 24 cable bundle using LSZH or PVC jacket. Standards compliant premium connectors and cable are used to ensure the best possible headroom and performance.

### FEATURES AND APPLICATIONS

- Factory bundled and terminated, fast installation plug & play
- Category 5E, 6 and 6A
- Factory tested using fluke testing equipment
- Direct connection to equipment/panel
- High performance and reliability- 100% tested
- Rapid deployment saves installation time eliminating field termination variables

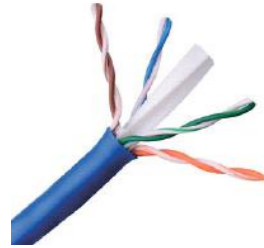
### ORDER INFORMATION

Ask Sales for Order Details: [sales@nexconec.com](mailto:sales@nexconec.com)

Or Contact Us by filling website contact form, one of our colleagues will get back to you shortly!

## CATEGORY 6A UTP

### CAT6A UTP CABLES



CAT6A U/UTP 4 Pair LAN Blue LSZH 305M/ reel in box  
 CAT6A U/UTP 4 Pair LAN Grey LSZH 305M/ reel in box  
 CAT6A U/UTP 4 Pair LAN Blue UL CM 305M/ reel in box  
 CAT6A U/UTP 4 Pair LAN Grey UL CM 305M/ reel in box

**CC6AUBL3**  
**CC6AUGYL3**  
**CC6AUBLC3**  
**CC6AUGYC3**

### CAT6A UTP PATCH PANEL



CAT6A 1U 24 Port UTP Keystone Jack Patch Panel

**CM6A1UKBK**



CAT6A 1U 24 Port Angled UTP Keystone Jack Patch Panel

**CM6A1UVBK**

### CAT6A KEYSTONE JACKS



CAT6A UTP KJ Black Toolless  
 CAT6A UTP KJ White Toolless  
 CAT6A UTP KJ Black Punch Type  
 CAT6A UTP KJ White Punch Type

**CN6AUBK**  
**CN6AUTWH**  
**CN6AUPBK**  
**CN6AUPWH**

### CAT6A PATCH CORDS



CAT6A U/UTP Patch Cord Blue 1mtr LSZH  
 CAT6A U/UTP Patch Cord Blue 2mtr LSZH  
 CAT6A U/UTP Patch Cord Blue 3mtr LSZH  
 CAT6A U/UTP Patch Cord Blue 5mtr LSZH  
 CAT6A U/UTP Patch Cord Blue 1mtr CM(PVC)  
 CAT6A U/UTP Patch Cord Blue 2mtr CM(PVC)  
 CAT6A U/UTP Patch Cord Blue 3mtr CM(PVC)  
 CAT6A U/UTP Patch Cord Blue 5mtr CM(PVC)

**CA6AUBL01L\***  
**CA6AUBL02L**  
**CA6AUBL03L**  
**CA6AUBL05L**  
**CA6AUBL01C**  
**CA6AUBL02C**  
**CA6AUBL03C**  
**CA6AUBL05C**

\*CA6AUxx00L xx for colour, 00 for length in Mtr  
 (White WH, Grey GY, Red RD, Blue BL, Black BK, Orange OR, Yellow YE, Green GR)

## CATEGORY 6A FTP SHIELDED

### CAT6A FTP CABLES



CAT6A F/UTP 4 Pair LAN Blue LSZH 305M/ reel in box  
 CAT6A F/UTP 4 Pair LAN Grey LSZH 305M/ reel in box  
 CAT6A F/UTP 4 Pair LAN Blue UL CM 305M/ reel in box  
 CAT6A F/UTP 4 Pair LAN Grey UL CM 305M/ reel in box



**CC6AFBLL3**  
**CC6AFGYL3**  
**CC6AFBLC3**  
**CC6AFGYC3**

### CAT6A STP PATCH PANELS



CAT6A 1U 24 Port STP Patch Panel

**CM6A1SP**



CAT6A 1U 24 Port STP Keystone Jack Patch Panel

**CM6A1SME**



CAT6A 1U 24 Port Angled STP Keystone Jack Patch Panel

**CM6A1SVK**

### CAT6A STP KEYSTONE JACKS



CAT6A STP KJ Toolless

**CN6ASTME**

### CAT6A STP FEED THRU ADAPTERS



CAT6A STP Feed Thru. Adapter

**CN6ASF**

### CAT6A FTP PATCH CORDS



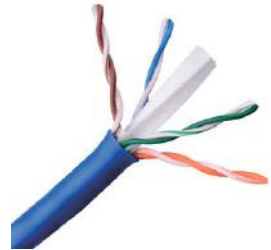
CAT6A F/UTP Patch Cord Blue 1mtr LSZH  
 CAT6A F/UTP Patch Cord Blue 2mtr LSZH  
 CAT6A F/UTP Patch Cord Blue 3mtr LSZH  
 CAT6A F/UTP Patch Cord Blue 5mtr LSZH  
 CAT6A F/UTP Patch Cord Blue 1mtr CM(PVC)  
 CAT6A F/UTP Patch Cord Blue 2mtr CM(PVC)  
 CAT6A F/UTP Patch Cord Blue 3mtr CM(PVC)  
 CAT6A F/UTP Patch Cord Blue 5mtr CM(PVC)

**CA6AFBL01L\***  
**CA6AFBL02L**  
**CA6AFBL03L**  
**CA6AFBL05L**  
**CA6AFBL01C**  
**CA6AFBL02C**  
**CA6AFBL03C**  
**CA6AFBL05C**

\*CA6AFxx00L xx for colour, 00 for length in Mtr  
 (White WH, Grey GY, Red RD, Blue BL, Black BK, Orange OR, Yellow YE, Green GR)

## CATEGORY 6 UTP

### CAT6 UTP CABLES



CAT6 U/UTP 4 Pair LAN Blue LSZH 305M/ reel in box  
 CAT6 U/UTP 4 Pair LAN Grey LSZH 305M/ reel in box  
 CAT6 U/UTP 4 Pair LAN Blue UL CM 305M/ reel in box  
 CAT6 U/UTP 4 Pair LAN Grey UL CM 305M/ reel in box  
 Outdoor CAT6 U/UTP 4 Pair LAN Black PE 305M/ reel

**CC6UBLL3**  
**CC6UGYL3**  
**CC6UBLC3**  
**CC6UGYC3**  
**CC6UBKP3**

### CAT6 UTP PATCH PANEL



CAT6 1U 24 Port UTP Keystone Jack Patch Panel  
 CAT6 1U 24 Port UTP PCB Patch Panel  
 CAT6 2U 48 Port UTP PCB Patch Panel  
 CAT6 1U 24 Port Angled UTP Keystone Jack Patch Panel

**CM61UKBK**  
**CM61UP**  
**CM62UP**  
**CM61UVBK**

### CAT6 UTP KEYSTONE JACKS



CAT6 UTP KJ Black Toolless  
 CAT6 UTP KJ White Toolless  
 CAT6 UTP KJ Black Punch Type  
 CAT6 UTP KJ White Punch Type

**CN6UTBK**  
**CN6UTWH**  
**CN6UPBK**  
**CN6UPWH**

### CAT6 UTP FEED THRU ADAPTERS



CAT6 UTP Feed Thru. Adapter Black  
 CAT6 UTP Feed Thru. Adapter White

**CN6UFBK**  
**CN6UFWH**

### CAT6 UTP PATCH CORDS



CAT6 U/UTP Patch Cord Blue 1mtr LSZH  
 CAT6 U/UTP Patch Cord Blue 2mtr LSZH  
 CAT6 U/UTP Patch Cord Blue 3mtr LSZH  
 CAT6 U/UTP Patch Cord Blue 5mtr LSZH  
 CAT6 U/UTP Patch Cord Blue 1mtr CM(PVC)  
 CAT6 U/UTP Patch Cord Blue 2mtr CM(PVC)  
 CAT6 U/UTP Patch Cord Blue 3mtr CM(PVC)  
 CAT6 U/UTP Patch Cord Blue 5mtr CM(PVC)

**CA6UBL01\***  
**CA6UBL02L**  
**CA6UBL03L**  
**CA6UBL05L**  
**CA6UBL01C**  
**CA6UBL02C**  
**CA6UBL03C**  
**CA6UBL05C**

\*CA6Uxx00L xx for colour, 00 for length in Mtr  
 (White WH, Grey GY, Red RD, Blue BL, Black BK, Orange OR, Yellow YE, Green GR)

## CATEGORY 6 FTP SHIELDED

### CAT6 FTP CABLES



CAT6 F/UTP 4 Pair LAN Blue LSZH 305M/ reel in box  
 CAT6 F/UTP 4 Pair LAN Grey LSZH 305M/ reel in box  
 CAT6 F/UTP 4 Pair LAN Blue UL CM 305 M/ reel in box  
 CAT6 F/UTP 4 Pair LAN Grey UL CM 305M/ reel in box  
 Outdoor CAT6 F/UTP 4 Pair LAN Black PE 500M/ reel



**CC6FBL3**  
**CC6FGYL3**  
**CC6FBL3**  
**CC6FGYC3**  
**CC6FBKP5**

### CAT6 STP PATCH PANELS



CAT6 1U 24 Port STP PCB Patch Panel  
 CAT6 1U 24 Port STP Keystone Jack Patch panel  
 CAT6 1U 24 Port Angled STP Keystone Jack Patch Panel

**CM61SP**  
**CM61SK**  
**CM61SVK**

### CAT6 STP KEYSTONE JACKS



CAT6 STP KJ Tool less

**CN6STME**

### CAT6 FTP PATCH CORDS



CAT6 F/UTP Patch Cord Blue 1mtr LSZH  
 CAT6 F/UTP Patch Cord Blue 2mtr LSZH  
 CAT6 F/UTP Patch Cord Blue 3mtr LSZH  
 CAT6 F/UTP Patch Cord Blue 5mtr LSZH  
 CAT6 F/UTP Patch Cord Blue 1mtr CM(PVC)  
 CAT6 F/UTP Patch Cord Blue 2mtr CM(PVC)  
 CAT6 F/UTP Patch Cord Blue 3mtr CM(PVC)  
 CAT6 F/UTP Patch Cord Blue 5mtr CM(PVC)

**CA6FBL01\***  
**CA6FBL02L**  
**CA6FBL03L**  
**CA6FBL05L**  
**CA6FBL01C**  
**CA6FBL02C**  
**CA6FBL03C**  
**CA6FBL05C**

\*CA6Fxx00L xx for colour, 00 for length in Mtr  
 (White WH, Grey GY, Red RD, Blue BL, Black BK, Orange OR, Yellow YE, Green GR)



**CATEGORY 5E UTP**

**CAT5E UTP CABLES**



CAT5E U/UTP 4 Pair LAN Blue LSZH 305M/ reel in box  
 CAT5E U/UTP 4 Pair LAN Grey LSZH 305M/ reel in box  
 CAT5E U/UTP 4 Pair LAN Blue UL CM 305M/ reel in box  
 CAT5E U/UTP 4 Pair LAN Grey UL CM305M/ reel in box  
 Outdoor CAT5E U/UTP 4 Pair LAN Black PE 305M/ reel

**CC5EUBLL3**  
**CC5EUGYL3**  
**CC5EUBLC3**  
**CC5EUGYC3**  
**CC5EUBKP3**

**CAT5E PATCH PANELS**



CAT5E 1U 24 Port UTP Keystone Jack Patch Panel

**CM5E1UKBK**



CAT5E 1U 24 Port UTP PCB Patch Panel

**CM5E1UP**



CAT5E 2U 48 Port UTP PCB Patch Panel

**CM5E2UP**

**CAT5E KEYSTONE JACKS**



CAT5E UTP KJ Black Toolless  
 CAT5E UTP KJ White Toolless  
 CAT5E UTP KJ Black Punch Type  
 CAT5E UTP KJ White Punch Type

**CN5EUTBK**  
**CN5EUTWH**  
**CN5EUPBK**  
**CN5EUPWH**

**CAT5E PATCH CORDS**



CAT5E U/UTP Patch Cord Grey 1mtr LSZH  
 CAT5E U/UTP Patch Cord Grey 2mtr LSZH  
 CAT5E U/UTP Patch Cord Grey 3mtr LSZH  
 CAT5E U/UTP Patch Cord Grey 5mtr LSZH  
 CAT5E U/UTP Patch Cord Grey 1mtr CM(PVC)  
 CAT5E U/UTP Patch Cord Grey 2mtr CM(PVC)  
 CAT5E U/UTP Patch Cord Grey 3mtr CM(PVC)  
 CAT5E U/UTP Patch Cord Grey 5mtr CM(PVC)

**CA5EUGY01L\***  
**CA5EUGY02L**  
**CA5EUGY03L**  
**CA5EUGY05L**  
**CA5EUGY01C**  
**CA5EUGY02C**  
**CA5EUGY03C**  
**CA5EUGY05C**

\*CA5EUxx00L xx for colour, 00 for length in Mtr  
 (White WH, Grey GY, Red RD, Blue BL, Black BK, Orange OR, Yellow YE, Green GR)

**PANELS AND ACCESSORIES**



0.5U 24port UTP KJ Patch Panel, Unloaded  
 0.5U 24port FTP Shielded KJ Patch Panel, Unloaded

**CMX0.5UUN**  
**CMX0.5SUN**



1U 16port STP/UTP KJ Patch Panel Unloaded

**CMX1SUN-16**



1U 24port STP/UTP KJ Patch Panel Unloaded

**CMX1SUN**



1U 24port UTP KJ Patch Panel Unloaded

**CMX1UKUN**



1U 24port Angled UTP KJ Patch Panel Unloaded

**CMX1UVUN**



Cat5e UTP RJ45 Connector Transparent  
 Cat6 UTP RJ45 Connector Transparent  
 Cat6A UTP RJ45 Connector Transparent

**CCRJ5EUT**  
**CCRJ6UT**  
**CCRJ6AUT**



Faceplate 1 Port KJ US Style  
 Faceplate 2 Port KJ US Style  
 Faceplate 3 Port KJ US Style  
 Faceplate 4 Port KJ US Style  
 Faceplate 6 Port KJ US Style

**CMFPS1**  
**CMFPS2**  
**CMFPS3**  
**CMFPS4**  
**CMFPS6**



Faceplate 1 Port KJ EU Style  
 Faceplate 2 Port KJ EU Style

**CMFPE1**  
**CMFPE2**



Back Box US Style 115x72mm  
 Back Box EU Style 86x86mm  
 Back Box EU Style Double 146x86mm

**CBBU1**  
**CBBE1**  
**CBBE2**



Copper Termination Box 1 Port Unloaded  
 Copper Termination Box 2 Port Unloaded

**CTB01**  
**CTB02**



Blank Jack White  
 Blank Jack Black  
 Fiber Keystone Coupler SC SX/LC DX White  
 Fiber Keystone Coupler SC SX/LC DX Black

**CBJ1**  
**CBJ2**  
**FJAK1**  
**FJAK2**

## POWER CORDS C13-C14

Nexconec power extension cords are reliable solution to power connectivity problems. These IEC320-C14 to IEC-320-C13 cables are designed for small data center, office workstation and other lower-amp applications. This C14 male to C13 female cord can be used to power a computer, server or monitor, attach a server or drive to a UPS system or PDU or extend an existing connection up to 10-ft. (3.05 m).

Get to Know More



### FEATURES AND APPLICATIONS

- Available in LSZH and PVC jacket material
- Oxygen-free copper conductor
- RoHS & CE compliant
- Wire gauge 18AWG
- Available in different colors and lengths
- Connect devices like computers, servers and monitors to a PDU
- Provide a high-quality replacement for a worn-out or missing power cord
- Rated at 250V 10A Maximum



Power Cable C13-C14 18AWG 10A 250V IEC320 CE, 0.6m Black  
 Power Cable C13-C14 18AWG 10A 250V IEC320 CE, 0.9m Black  
 Power Cable C13-C14 18AWG 10A 250V IEC320 CE, 1.2m Black  
 Power Cable C13-C14 18AWG 10A 250V IEC320 CE, 1.5m Black  
 Power Cable C13-C14 18AWG 10A 250V IEC320 CE, 1.8m Black

**PWR0.6K**  
**PWR0.9K**  
**PWR1.2K**  
**PWR1.5K**  
**PWR1.8K**



Power Cable C13-C14 18AWG 10A 250V IEC320 CE, 0.6m Blue  
 Power Cable C13-C14 18AWG 10A 250V IEC320 CE, 0.9m Blue  
 Power Cable C13-C14 18AWG 10A 250V IEC320 CE, 1.2m Blue  
 Power Cable C13-C14 18AWG 10A 250V IEC320 CE, 1.5m Blue  
 Power Cable C13-C14 18AWG 10A 250V IEC320 CE, 1.8m Blue

**PWR0.6B**  
**PWR0.9B**  
**PWR1.2B**  
**PWR1.5B**  
**PWR1.8B**



Power Cable C13-C14 18AWG 10A 250V IEC320 CE, 0.6m Red  
 Power Cable C13-C14 18AWG 10A 250V IEC320 CE, 0.9m Red  
 Power Cable C13-C14 18AWG 10A 250V IEC320 CE, 1.2m Red  
 Power Cable C13-C14 18AWG 10A 250V IEC320 CE, 1.5m Red  
 Power Cable C13-C14 18AWG 10A 250V IEC320 CE, 1.8m Red

**PWR0.6R**  
**PWR0.9R**  
**PWR1.2R**  
**PWR1.5R**  
**PWR1.8R**

## ACTIVE COMPONENTS

Fiber Media Converters	68
SFP Transceivers	69
QSFP Transceivers	70
XFP Transceivers	71
AOC & DAC Transceivers	72

### ETHERNET FIBER MEDIA CONVERTERS 10/100 Mbps



#### FEATURES

- Auto-cross over for MDI/MDIX in TP port
- Auto-negotiation in TP port
- Supports link fault pass through (LEP) function
- LED display for link/activity, 10/100M
- Converter mode with auto-change-forward (switch) function

Get to Know More



### SFP TRANSCEIVERS



- SFP Transceiver
- SFP BiDi Transceiver
- SFP CWDM Transceiver
- SFP DWDM Transceiver

Get to Know More



### GIGABIT FIBER MEDIA CONVERTERS 10/100/1000Mbps



#### FEATURES

- Automatic identification of MDI/MDI-X cross line
- 10/100/1000Mbps port with full/half duplex auto-negotiation
- Back pressure flow control for full duplex
- Converter mode with auto-change-forward (switch) function

Get to Know More



### SFP+ TRANSCEIVERS



- 10G SFP+ Transceiver
- 10G SFP+ BiDi Transceiver
- 10G SFP+ CWDM Transceiver
- 10G SFP+ DWDM Transceiver

Get to Know More



### SFP28 TRANSCEIVERS



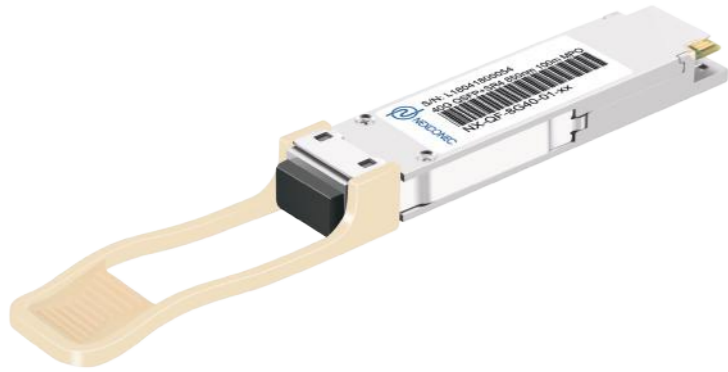
- 25G SFP28 Transceiver
- 25G SFP28 CWDM Transceiver
- 25G SFP28 DWDM Transceiver
- 25G SFP28 BiDi Transceiver
- 25G SFP28 MWDM Transceiver
- 25G SFP28 LWDM Transceiver

Get to Know More



AT	1	SPEED	2	FIBER MODE	3	CONNECTOR	4	DISTANCE	5	POWER ADAPTER	6	POWER SUPPLY
E	Ethernet, 10/100M	S	Single Mode	SS	SC Simplex*	05	550mtr for MM, 850nm	EU	EU type	E	EXTERNAL	
G	Gigabit, 10/100/1000M	M	Multimode	SD	SC Duplex	2	2KM for MM, 1300nm	US	US type	I	INTERNAL	
				LS	LC Simplex*	20	20KM	UK	UK type			
				LD	LC Duplex	40	40KM	AU	AU type			
				ST	ST Duplex	60	60KM					
						80	80KM					
						100	100KM					
						120	120KM					

**QSFP+ TRANSCEIVERS**



- 40G QSFP+ SR4 Transceiver
- 40G QSFP+ LR4 Transceiver
- 40G QSFP+ ER4 Transceiver
- 40G QSFP+ ZR4 Transceiver
- 40G QSFP+ PSM4 Transceiver

Get to Know More



**XFP TRANSCEIVERS**



- 10G XFP Transceiver
- 10G XFP BiDi Transceiver
- 10G XFP CWDM Transceiver
- 10G XFP DWDM Transceiver

Get to Know More



**QSFP28 TRANSCEIVERS**



- 100G QSFP28 SR4 Transceiver
- 100G QSFP28 PSM4 Transceiver
- 100G QSFP28 CWDM4 Transceiver
- 100G QSFP28 LR4 Transceiver
- 100G QSFP28 ER4 Lite Transceiver

Get to Know More



**3G VIDEO SFP TRANSCEIVERS**

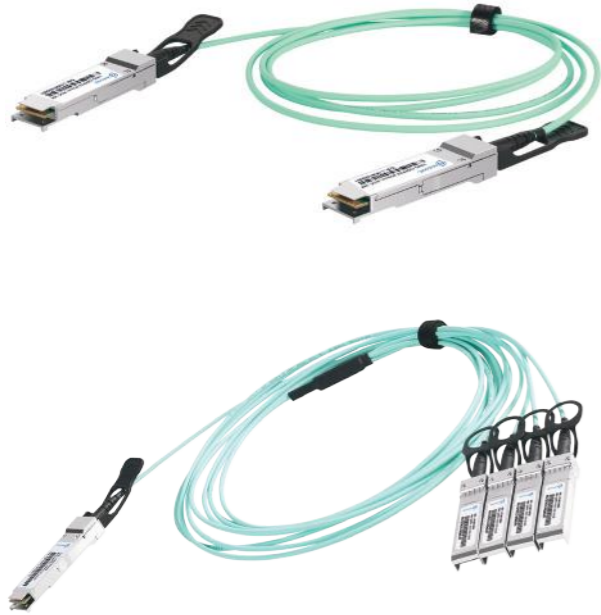


- 3G SFP Transceiver
- 3G SFP BiDi Transceiver
- 3G Video SFP Transceiver

Get to Know More



ACTIVE OPTICAL CABLES - (AOC)



- 100Gbps QSFP28 Active Optical Cable
- 40Gbps QSFP+ Active Optical Cable
- 40Gbps QSFP+ - 4x10G SFP+ Active Optical Cable
- 10Gbps SFP+ Active Optical Cable

Get to Know More



DIRECT ATTACH COPPER - (DAC)



- 100G QSFP28 Direct Attach Cable
- 40G QSFP+ DAC Direct Attach Cable
- 25G SFP28 DAC Direct Attach Cable
- 10G SFP+ DAC Direct Attach Cable

Get to Know More



NEXCONEC CERTIFICATES

Nexconec Ltd is approved to ISO and maintains third party approvals on the performance of the products and systems from Intertek laboratories. The Nexconec Cabling System is guaranteed to meet or exceed the electrical or optical performance requirements of the relevant category as defined in the following standard: **EN 50173, ISO 11801, ANSI-TIA-578B.**

ISO CERTIFICATES

- ISO 9001:2015
- ISO 14001:2015
- ISO 45001:2018



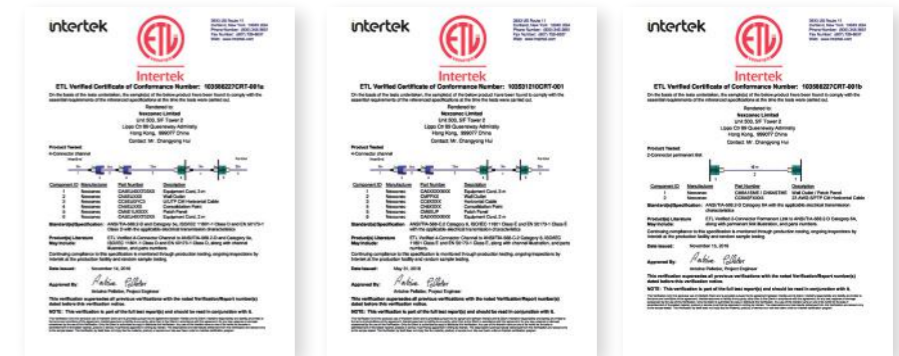
CPR CERTIFICATES

- CPR : Cca-s1a,d0,a1
- CPR : B2ca-s1a,d0,a1



ETL CERTIFICATES

- Cat5e U/UTP ETL Verified 4-Connector Channel
- Cat6 U/UTP ETL Verified 4-Connector Channel
- Cat6A S/FTP ETL Verified 2-Connector Perm. Link



NXC CERTIFICATES

- Authorized Installer Certification
- Authorized Distributor Certification
- System Warranty Certification

